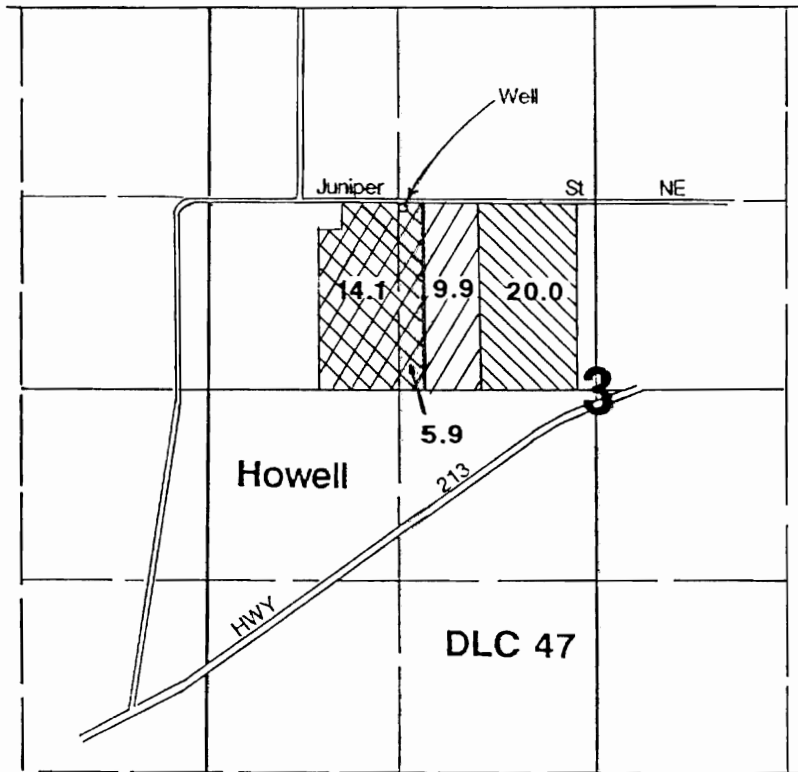


# T.7S., R.2W., W.M.

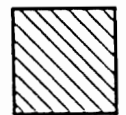
# RECEIVED

MAR 14 1996

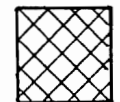
WATER RESOURCES DEPT  
SALEM, OREGON



1"=1320'



Transferred to



Transferred From

Well located 20'S & 20'E from NW cor SE1/4 NW1/4 Section 3.

## Application Map

## Robert Ditchen

Transfer #: 7520

