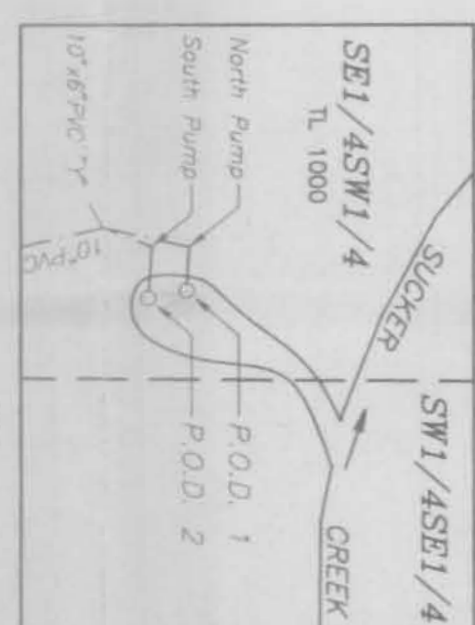
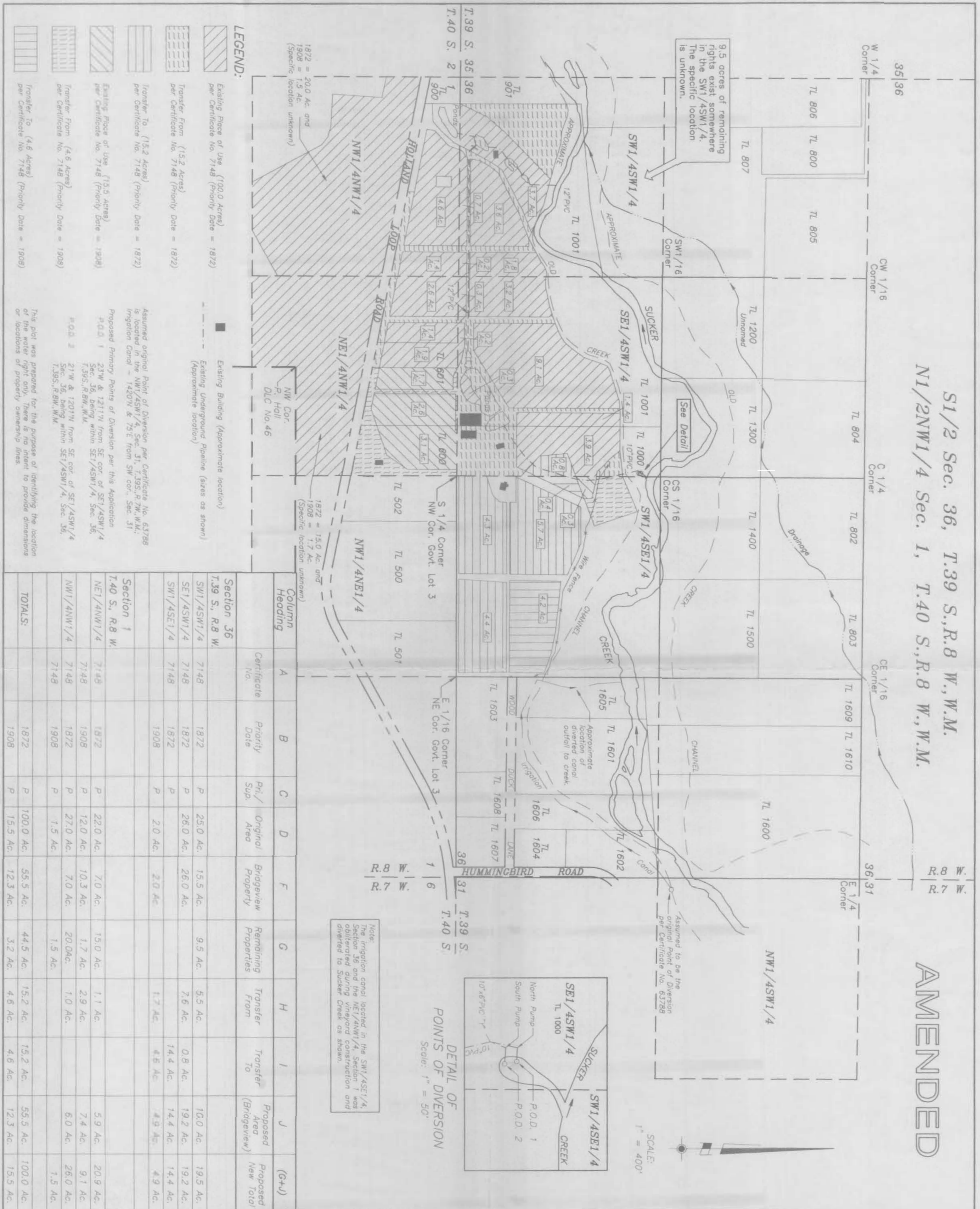


S1/2 Sec. 36, T.39 S., R.8 W., W.M.  
 N1/2NW1/4 Sec. 1, T.40 S., R.8 W., W.M.

AMENDED



Note:  
 The irrigation canal located in the SW1/4SE1/4, Section 36 and the NE1/4NW1/4, Section 1 was obliterated during vineyard construction and diverted to Sucker Creek as shown.

**LEGEND:**

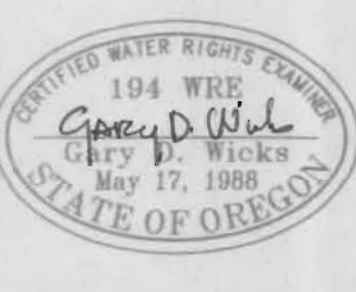
- Existing Piece of Use (100.0 Acres) per Certificate No. 7148 (Priority Date = 1872)
- Transfer From (15.2 Acres) per Certificate No. 7148 (Priority Date = 1872)
- Transfer To (15.2 Acres) per Certificate No. 7148 (Priority Date = 1872)
- Existing Piece of Use (15.5 Acres) per Certificate No. 7148 (Priority Date = 1908)
- Transfer From (4.6 Acres) per Certificate No. 7148 (Priority Date = 1908)
- Transfer To (4.6 Acres) per Certificate No. 7148 (Priority Date = 1908)

Existing Building (Approximate location)  
 Existing Underground Pipeline (lines as shown)  
 Assumed original Point of Diversion per Certificate No. 63788 is located in the NW1/4SW1/4, Sec. 31, T.39S., R.7W., W.M., Irrigation Canal - 1420N. & 75E. from SW cor., Sec. 31  
 Proposed Primary Points of Diversion per this Application  
 #0.0 1 23W & 1211N from SE cor. of SE1/4SW1/4, Sec. 36, being within SE1/4SW1/4, Sec. 36, T.39S., R.8W., W.M.  
 #0.0 2 21W & 1201N from SE cor. of SE1/4SW1/4, Sec. 36, being within SE1/4SW1/4, Sec. 36, T.39S., R.8W., W.M.

Column Heading	A	B	C	D	F	G	H	I	J	(G+J)
Certificate No.	Priority Date	Pri./Sup.	Original Area	Bridgeview Property	Remaining Properties	Transfer From	Transfer To	Proposed Area (Bridgeview)	Proposed New Total	
Section 36										
T.39 S., R.8 W.										
SW1/4SW1/4	7148	1872	P	25.0 Ac.	15.5 Ac.	9.5 Ac.	5.5 Ac.	10.0 Ac.	19.5 Ac.	
SE1/4SW1/4	7148	1872	P	26.0 Ac.	26.0 Ac.	7.6 Ac.	0.8 Ac.	19.2 Ac.	19.2 Ac.	
SW1/4SE1/4	7148	1872	P	2.0 Ac.	2.0 Ac.	1.7 Ac.	14.4 Ac.	14.4 Ac.	14.4 Ac.	
Section 1										
T.40 S., R.8 W.										
NE1/4NW1/4	7148	1872	P	22.0 Ac.	7.0 Ac.	15.0 Ac.	1.1 Ac.	5.9 Ac.	20.9 Ac.	
NW1/4NW1/4	7148	1908	P	12.0 Ac.	10.3 Ac.	1.7 Ac.	2.9 Ac.	7.4 Ac.	9.1 Ac.	
NW1/4NW1/4	7148	1872	P	27.0 Ac.	7.0 Ac.	20.0 Ac.	1.0 Ac.	6.0 Ac.	26.0 Ac.	
NW1/4NW1/4	7148	1908	P	1.5 Ac.	1.5 Ac.	1.5 Ac.	1.5 Ac.	1.5 Ac.	1.5 Ac.	
TOTALS:				100.0 Ac.	55.5 Ac.	44.5 Ac.	15.2 Ac.	15.2 Ac.	100.0 Ac.	

**WATER RIGHT APPLICATION AND TRANSFER MAP**

PROJECT NO. 566-98-383  
 DRAWING NO. (KERVAN.DWG) 301-18.24  
 DATE Nov. 11, 1998  
 Revision No. 4 = 10-11-04  
 SCALE 1" = 400'



SURVEYED FOR:  
**BRIDGEVIEW VINEYARDS WINERY**  
 4210 Holland Loop Road  
 Cave Junction, OR. 97523  
 Tel. (541) 592-4688

LOCATED IN  
 S1/2 Sec. 36, T.39 S., R.8 W., W.M. &  
 N1/2NW1/4 Sec. 1, T.40 S., R.8 W., W.M.  
 Josephine County, Oregon

SURVEYED BY:  
**WICKS ENGINEERING & SURVEYING**  
 311 N.E. "D" Street  
 Grants Pass, Oregon 97526  
 Tel. (541) 479-3436

SHEET NO. 1 of 1

Renewal Date: 6-30-04