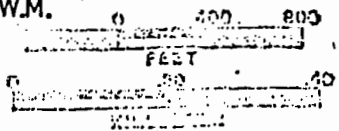


SECTION 18 T.02N. R.10E. W.M.
HOOD RIVER COUNTY

SCALE 1"=800'



RECEIVED

TO MAP

T-8122

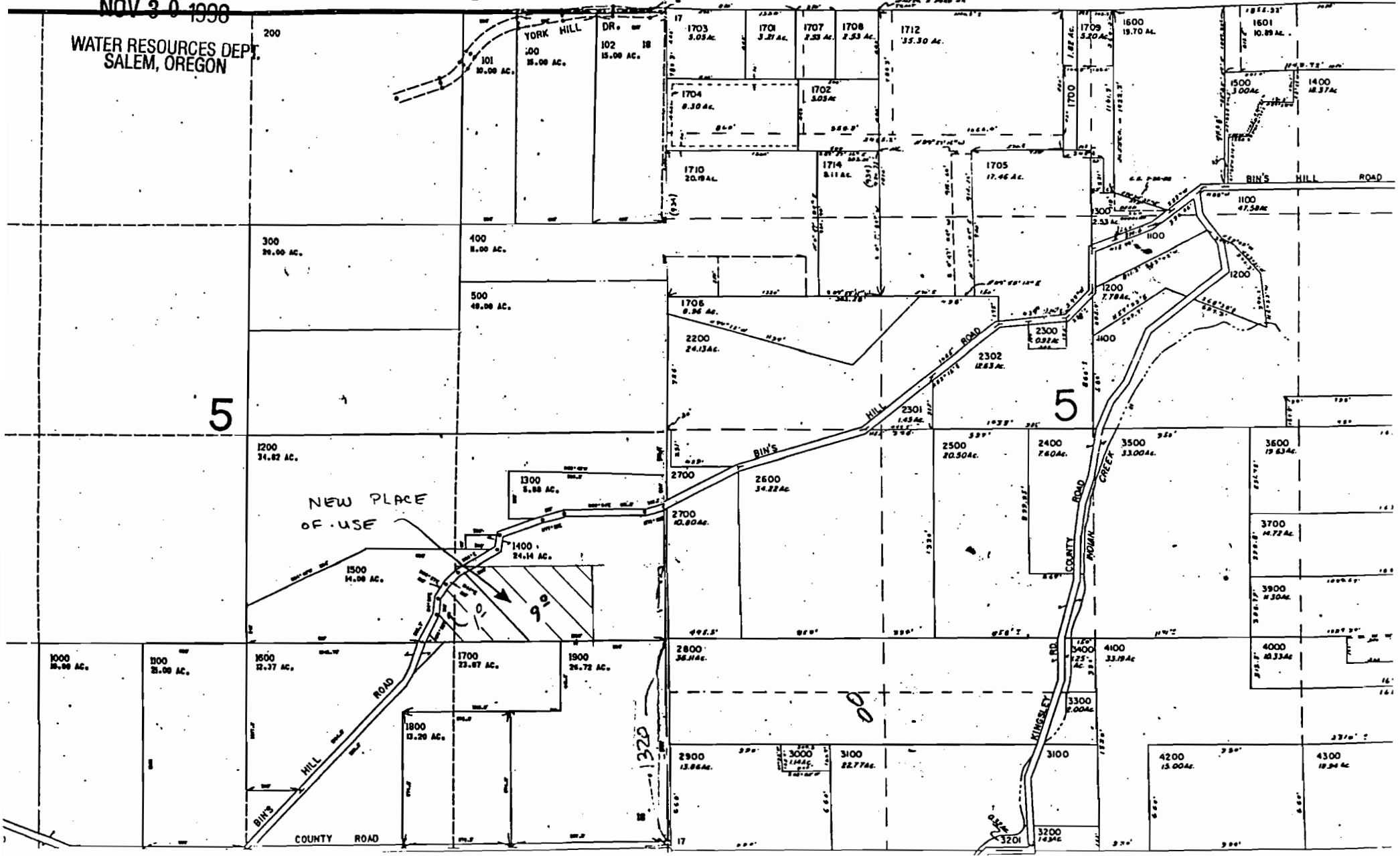
SEE MAP 02N 10 07

1" = 800 ft

See Map 2N 10 8

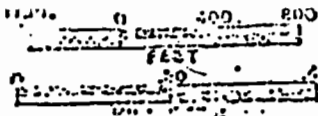
NOV 30 1998

WATER RESOURCES DEPT.
SALEM, OREGON



MAP WAS PREPARED FOR SECTION PURPOSE ONLY.

HOOD RIVER COUNTY



Permit # 52390

RECEIVED

NOV 30 1998

WATER RESOURCES DEPT. SALEM, OREGON

SEE MAP 024 10 07

NOV 1 1994

WATER RESOURCES DEPT. SALEM, OREGON

660x600 = 396,000
÷ 43560 = 9.09

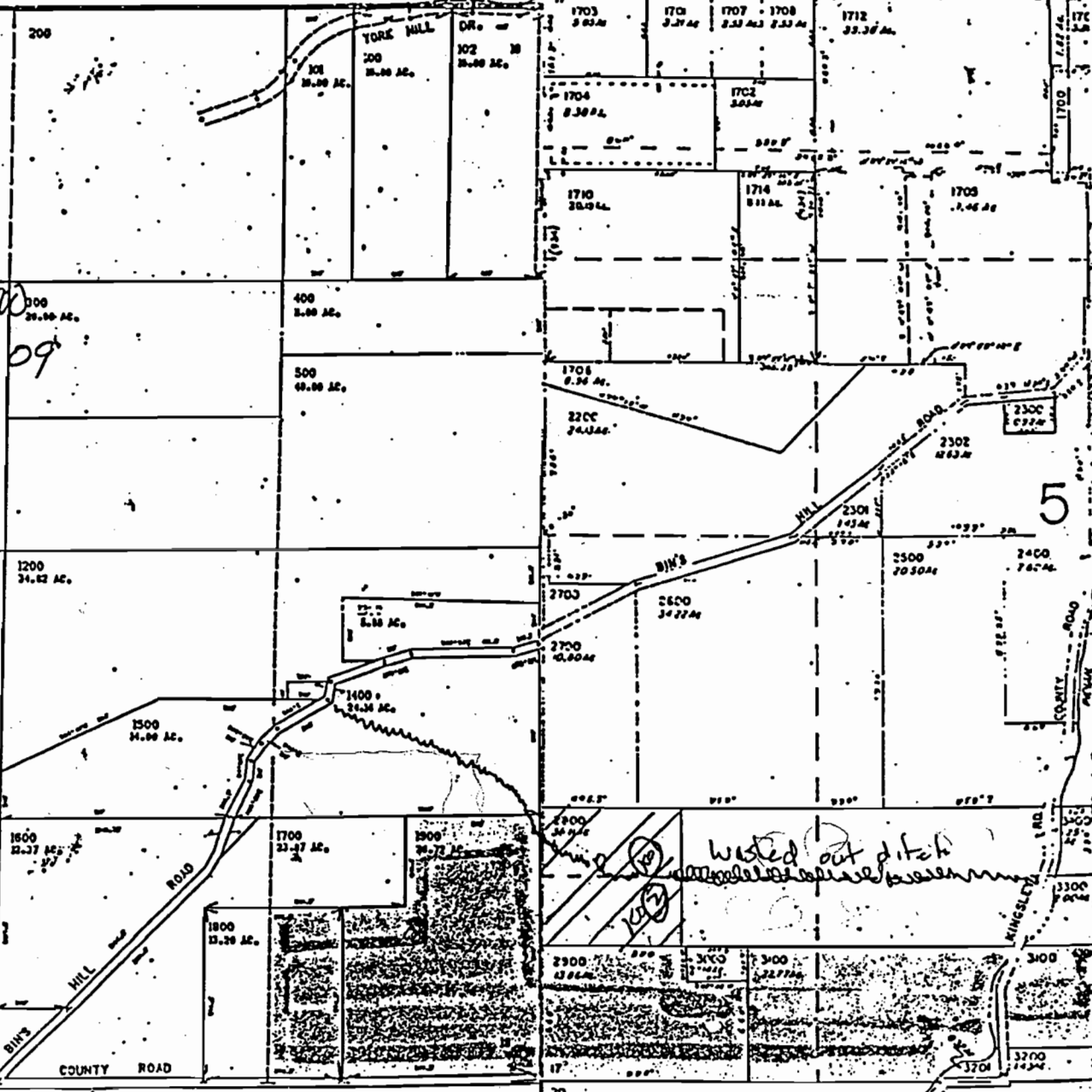
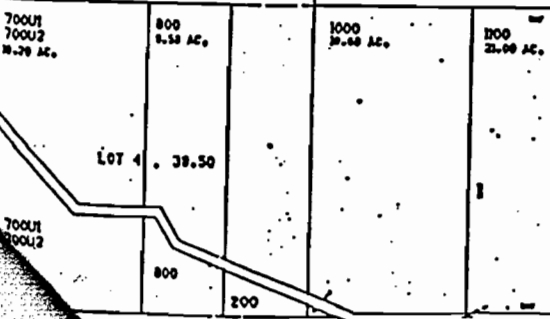
LOT 2 38.30

LOT 3 38.70

LOT 4 38.50

5

5



FROM MAP (PERMIT 52390 MAP)

T-8122