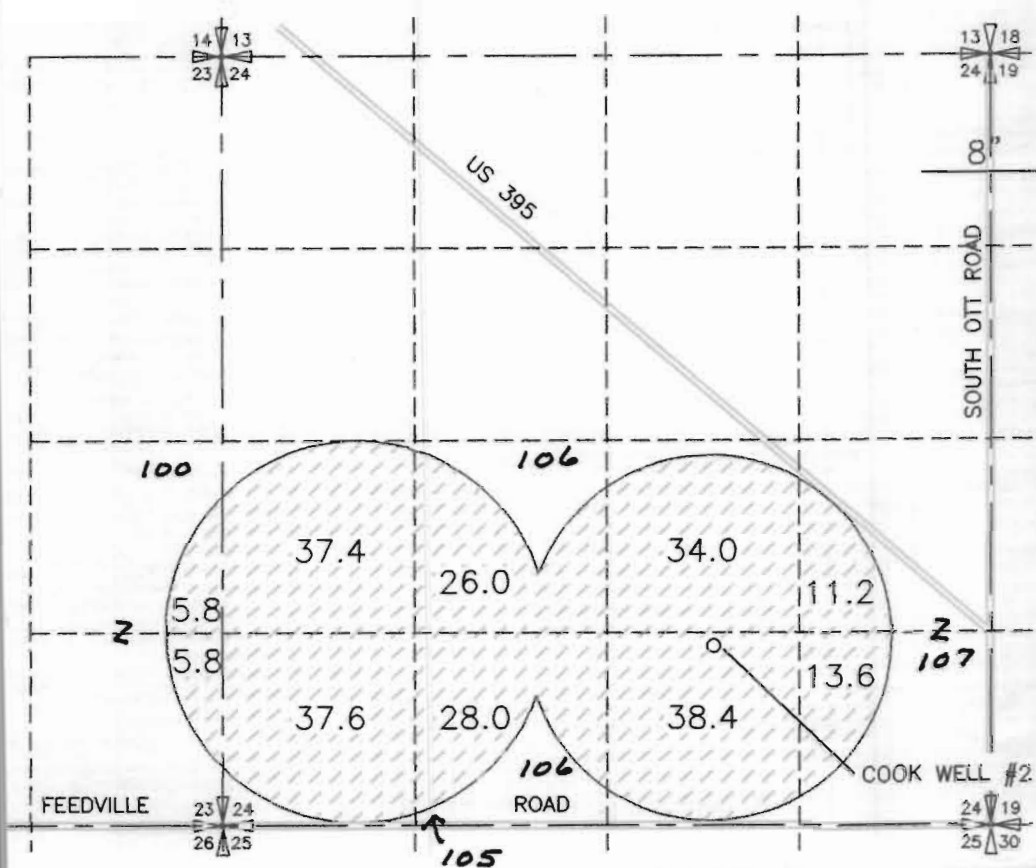
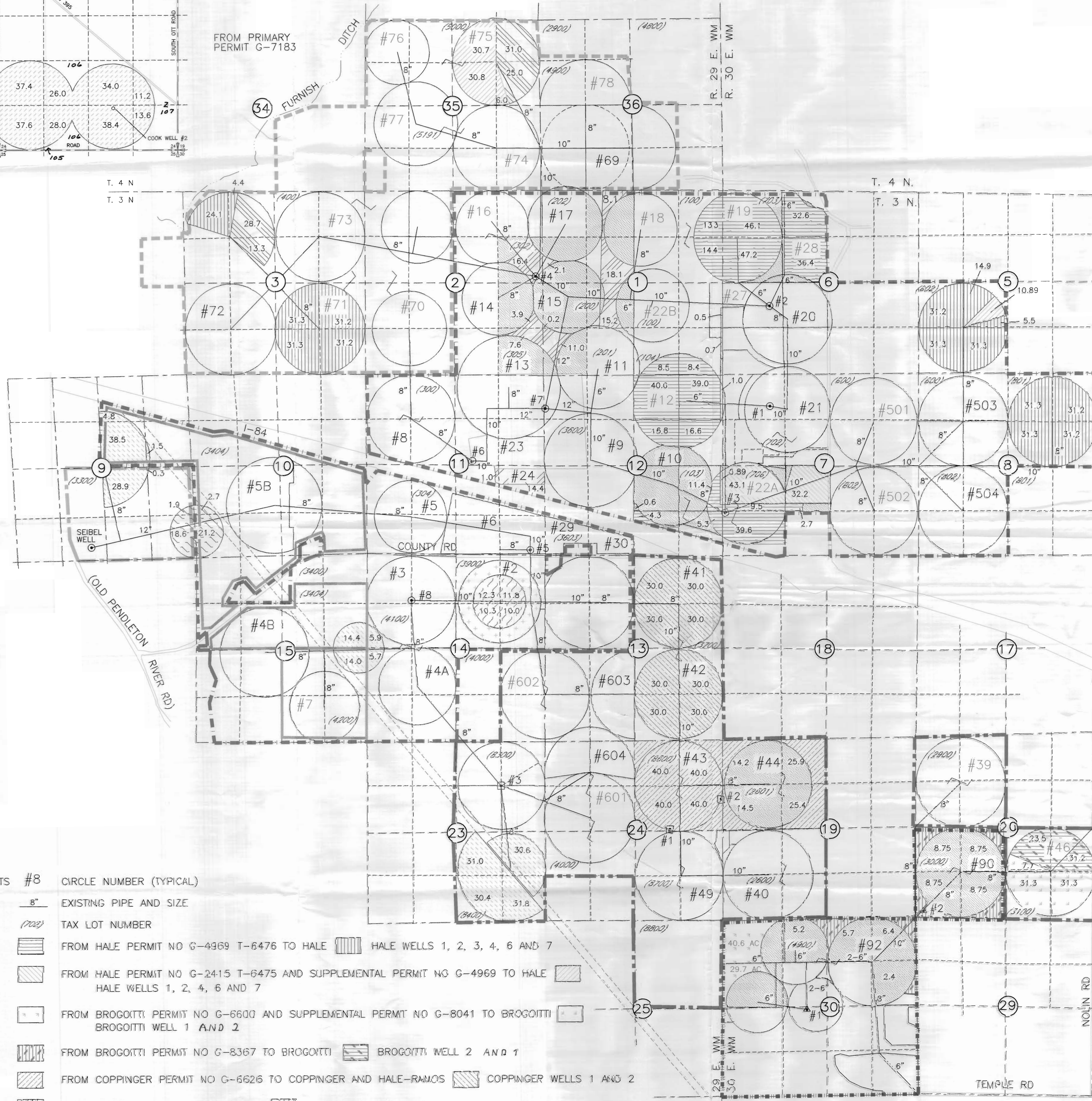


T4N, R28E, WM

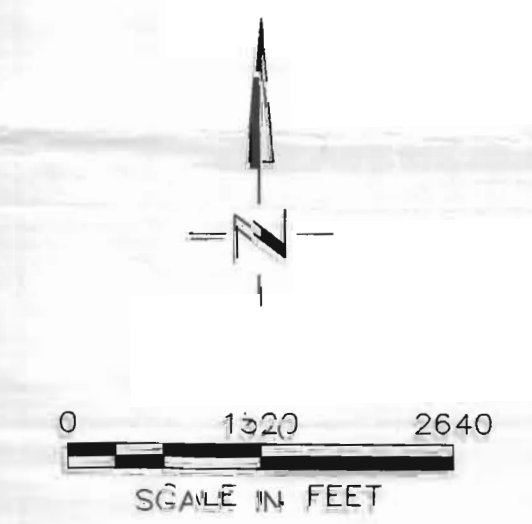


FROM PRIMARY PERMIT G-7183



WELL LEGEND

- HALE NO ① 4340'N + 1830'W FROM S1/4 COR, SEC 7 T3N R 30E W.M.
- HALE NO ② 2010'N + 1330'E FROM SW COR, SEC 6 T3N R 30E W.M.
- HALE NO ③ 1420'S + 40'E FROM W1/4 COR, SEC 7 T3N R 30E W.M.
- HALE NO ④ 180'N + 260'W FROM E1/4 COR, SEC 2 T3N R 29E W.M.
- HALE NO ⑤ 60'N + 590'W FROM SE COR, SEC 11 T3N R 29E W.M.
- HALE NO ⑥ 132'N + 2190'W FROM E1/4 COR, SEC 11 T3N R 29E W.M.
- HALE NO ⑦ 1010'S + 40'E FROM NW COR, SEC 12 T3N R 29E W.M.
- HALE NO ⑧ 1350'S + 50'W FROM NE COR NW 1/4 NW 1/4 SEC 14 T3N R 29E W.M.
- HALE SEIBEL WELL 380' NORTH AND 3120' WEST FROM SE CORNER SEC 9 T3N R 29E W.M.
- COPPINGER NO ① 20'N + 1570'W FROM E1/4 COR, SEC 24 T3N R 29E W.M.
- COPPINGER NO ② 960'N + 30'W FROM E1/4 COR, SEC 24 T3N R 29E W.M.
- COPPINGER NO ③ 3960'N + 1320'W FROM SE COR, SEC 23 T3N R 29E W.M.
- BROGGIOTTI NO ① 30'S + 640'W FROM CENTER, SEC 30 T3N R 30E W.M.
- BROGGIOTTI NO ② 100'N + 80'E FROM SW COR, SEC 20 T3N R 30E W.M.



- ATTACHMENTS #8 CIRCLE NUMBER (TYPICAL)
- 8" EXISTING PIPE AND SIZE
 - (702) TAX LOT NUMBER
 - A FROM HALE PERMIT NO G-4969 T-6476 TO HALE HALE WELLS 1, 2, 3, 4, 6 AND 7
 - B FROM HALE PERMIT NO G-2415 T-6475 AND SUPPLEMENTAL PERMIT NO G-4969 TO HALE HALE WELLS 1, 2, 4, 6 AND 7
 - C FROM BROGGIOTTI PERMIT NO G-6600 AND SUPPLEMENTAL PERMIT NO G-8041 TO BROGGIOTTI BROGGIOTTI WELL 1 AND 2
 - D FROM BROGGIOTTI PERMIT NO G-8367 TO BROGGIOTTI BROGGIOTTI WELL 2 AND 1
 - E FROM COPPINGER PERMIT NO G-6626 TO COPPINGER AND HALE-RAMOS COPPINGER WELLS 1 AND 2
 - F FROM PERMIT NO G-5215 TO HALE HALE WELLS 1, 2, 4, 6 AND 7
 - G FROM HALE PERMIT NO G-5215 TO HALE HALE WELLS 5 AND 8
 - H FROM COOK PERMIT NO G-7183 TO HALE SEIBEL WELL - THIS TRANSFER IS ON A SEPARATE APPLICATION
 - AREAS OF EXISTING WATER RIGHTS NOT INCLUDED IN THIS TRANSFER
 - AREA OF REMAINING WATER RIGHT NOT IRRIGATED DURING 1999 SEASON

T-8144
T-8145

12/16/98
3522.032
3522/199.DWG