

FINAL PROOF SURVEY MAP

T 4 S R 1 W, W.M.

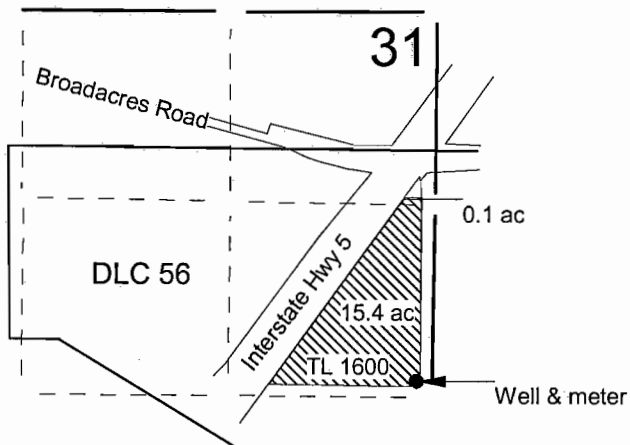
Prepared For: Garden World LLC

Transfer: T-9117

RECEIVED

NOV 09 2005

**WATER RESOURCES DEPT
SALEM, OREGON**



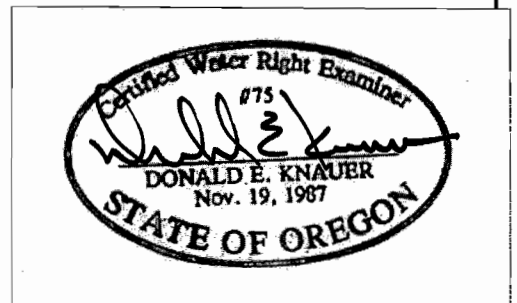
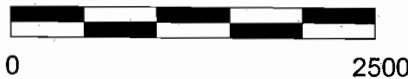
Well: 110' N & 120' W of the
E 1/4 corner section 31

RECEIVED

NOV 09 2005

**WATER RESOURCES DEPT
SALEM, OREGON**

4" = 1 mile



This map is for water
right purposes only.