

7-7461

RECEIVED

DEC 26 1995

WATER RESOURCES DIVISION
SALEM, OREGON

ROCK TABLE

500
500ACI

502
300Ac

503

(P-11373)

AC

ROAD

AIRPORT (unrecorded)

BIK 8
(A12080)
(P-11372)

BIK 6

BIK 5

BIK 4

BIK 3

BIK 2

BIK 1

BIK 16

BIK 15

BIK 14

BIK 13

BIK 12

BIK 11

BIK 10

BIK 9

BIK 8

BIK 7

BIK 6

BIK 5

BIK 4

BIK 3

BIK 2

BIK 1

AIRPORT

ROAD

49-1

BIDDLE

ROAD

DRIVE

AVION

600

700

800

900

1000

SR-2.5

1101

1103

1102

1104

18 29 Ac

Parcel 3

P-87-1994

3/24/55

1105

20 12 Ac

Parcel 2

3/24/55

1100

32.4 Acres total

37-2W-12A

1" = 200'

Sw 1/4 NE 1/4

32.4 ACRES Total

N

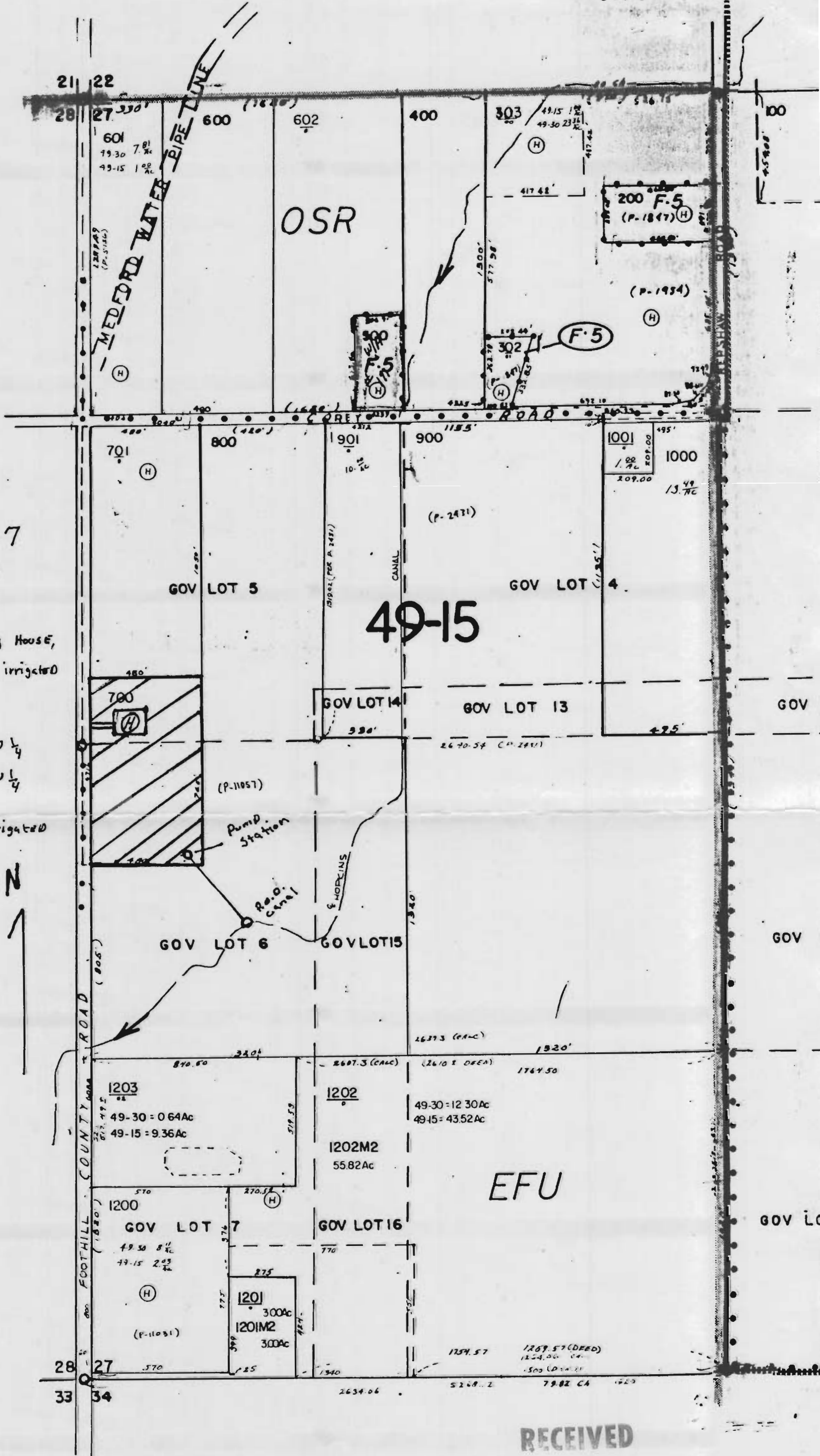
FROM

to be removed
from irrigation service

2642 DEC
V-4COR

V-4COR

T-7461




365-1W-27

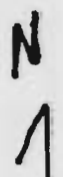
Tax lot 700

1" = 400'

7 ACRES EXCLUDING HOUSE,
BARN & PREVIOUSLY IRRIGATED
LAND.

2 ACRES SW 1/4 NW 1/4
5 ACRES NW 1/4 SW 1/4

 Land to be irrigated



RECEIVED

DEC 26 1995

WATER RESOURCES DEPT.
SALEM, OREGON

T-7461

32

33

VILAS

T.36S. R.1W. W.M.

ROAD

T.37S. R.1W. W.M.

5

4

300

200

(H)

100

198 ac.

37s-1w-04 TAX lot 400

RECEIVED

1" = 400'

DEC 26 1995

WATER RESOURCES DEPT
SALEM, OREGON

392 ac

☐ Land to be irrigated

14.2 Acres NW 1/4 NW 1/4

6.9 Acres SW 1/4 NW 1/4

3.3 Acres SE 1/4 NW 1/4

EXCLUDING SW 1/4 NW 1/4 & Hopkins Canal Right of Way - 2.5 Acres

25.4 Total Acres

500 49-15 1.2
49-30 75 1/2

160 ac



McLOUGHLIN DRIVE

SWANSON CREEK

HOPKINS CANAL

Pump Station

EFU

600

5

600

1

49-15

1279.60'

1300.0'

6

GILMAN'S

2

1282.37'

1312.2'

CLON

101