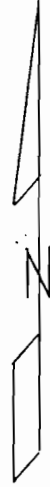
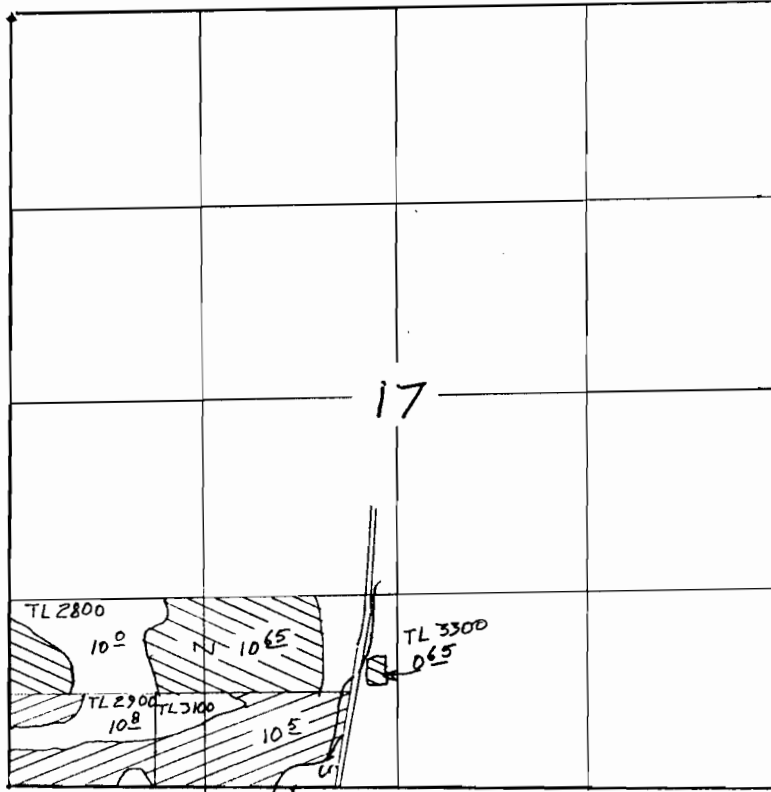


TOWNSHIP 2 NORTH, RANGE 10 EAST, W.M.



Scale 1" = 1320'

- ⊗ From
- ⊗ To

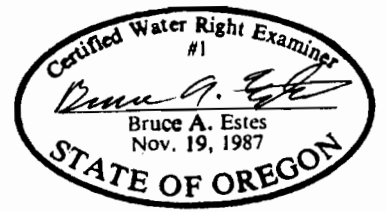
RECEIVED

JUL 17 1996

WATER RESOURCES DEPT.
SALEM, OREGON

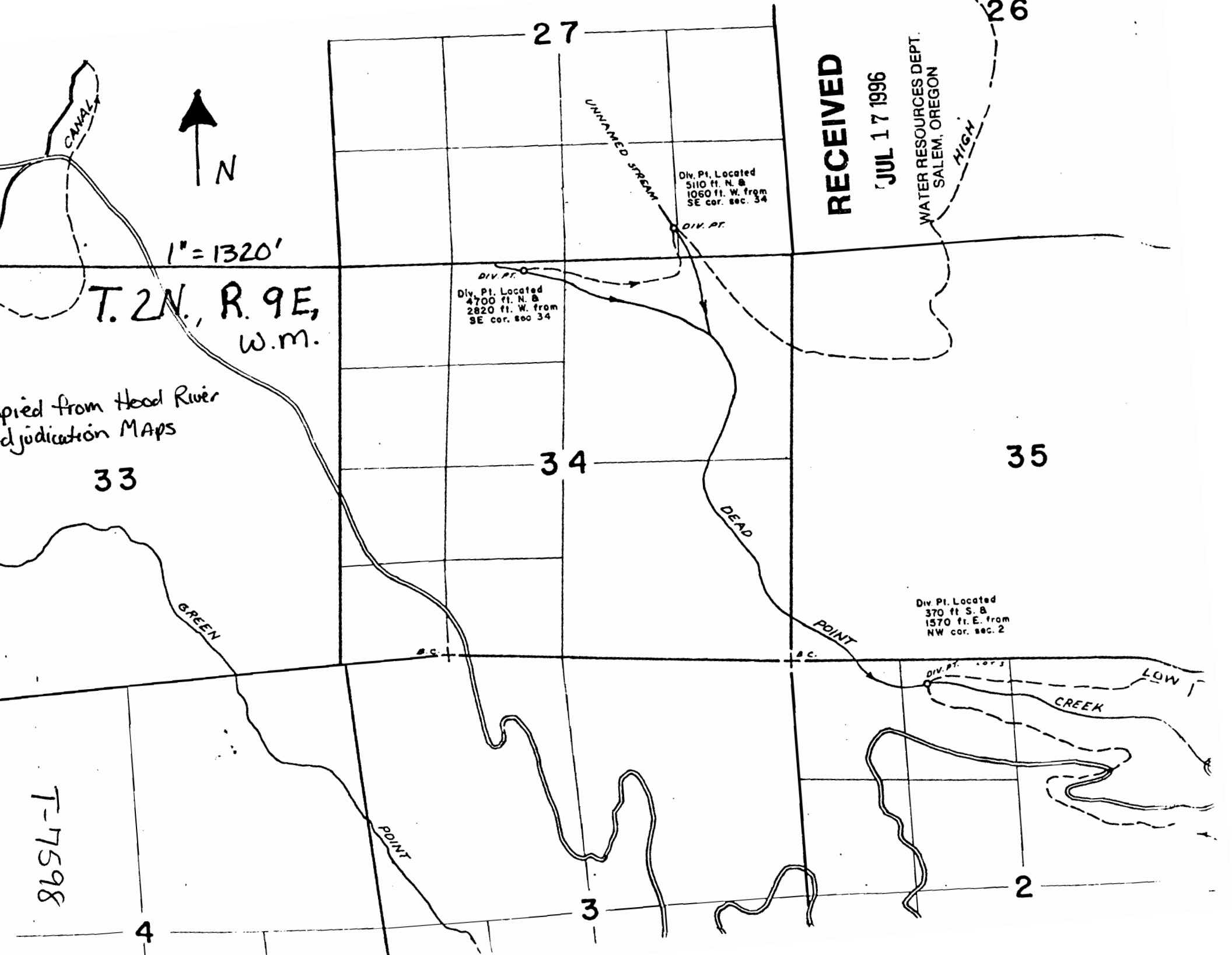
TRANSFER APPLICATION MAP
for
FARMERS IRRIGATION DIST.

T-7598



This map is for the purpose of locating a water right only and has no intent to provide legal dimensions or the location of property lines.

ESTES SURVEYS
6293 Sunnyview Rd. NE Salem, OR 97305 (503) 585-7593
60382 Arnold Rd. Bend, OR 97702 (503) 382-7391



27

26

RECEIVED

JUL 17 1996

WATER RESOURCES DEPT.
SALEM, OREGON

HIGH



1" = 1320'

T. 2N., R. 9E,
W.M.

Copied from Head River
adjudication Maps

33

34

35

Div. Pt. Located
510 ft. N. &
1060 ft. W. from
SE cor. sec. 34

DIV. PT.

Div. Pt. Located
4700 ft. N. &
2820 ft. W. from
SE cor. sec. 34

DIV. PT.

Div. Pt. Located
370 ft. S. &
1570 ft. E. from
NW cor. sec. 2

DIV. PT.

CANAL

UNNAMED STREAM

DEAD

POINT

GREEN

POINT

CREEK

LOW

8654-1

4

3

2

29

T. 2N., R. 9E., W.M.

28

Div. Pt. Located
4400 ft. N. &
8100 ft. W. from
SE cor. SW 1/4 SW 1/4
Sec. 34

UNNAMED STREAM

CANAL

GREEN

DIV. PT.

POINT

(STANLEY - SMITH)

32

33

NORTH

FORK

GREEN

REVISION

JUL 17 1996

WATER RESOURCES DEPT.
SALEM, OREGON

5

4



1" = 1320'

Copied from Hood River Adjudication Maps

T-7598

T. 2N., R. 9E., W.M.

Copied from Hood River Adjudication Maps

1" = 1320"



RECEIVED

JUL 17 1996

WATER RESOURCES DEPT.
SALEM, OREGON

15

14

13

Springs Located
1760 ft. N. &
1480 ft. E. from
SW cor. sec. 14

PARKER (PARKERTOWN) SPRINGS

Div. Pt. Located
1820 ft. S &
1270 ft. W. from
E. 1/4 cor. sec. 14

Div. Pt. Located
1740 ft. N
530 ft. W
E. 1/4 cor. 1

PHELPS

DITCH

STANLEY SMITH DITCH

CREEK

LOWER GREEN
POINT RESERVOIR

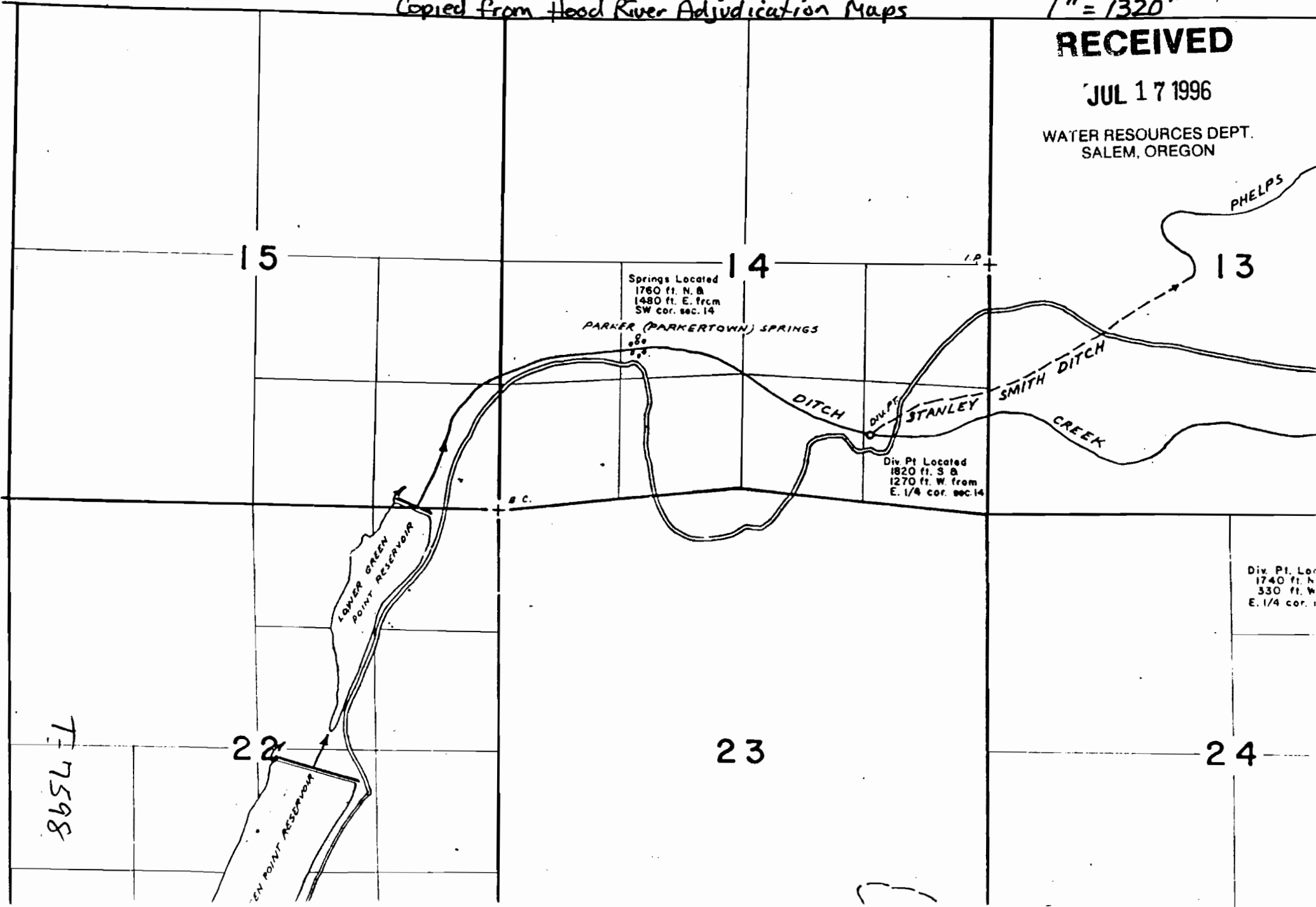
22

23

24

UPPER
POINT RESERVOIR

865L-1



T. 2N., R. 4E., W. 11E.



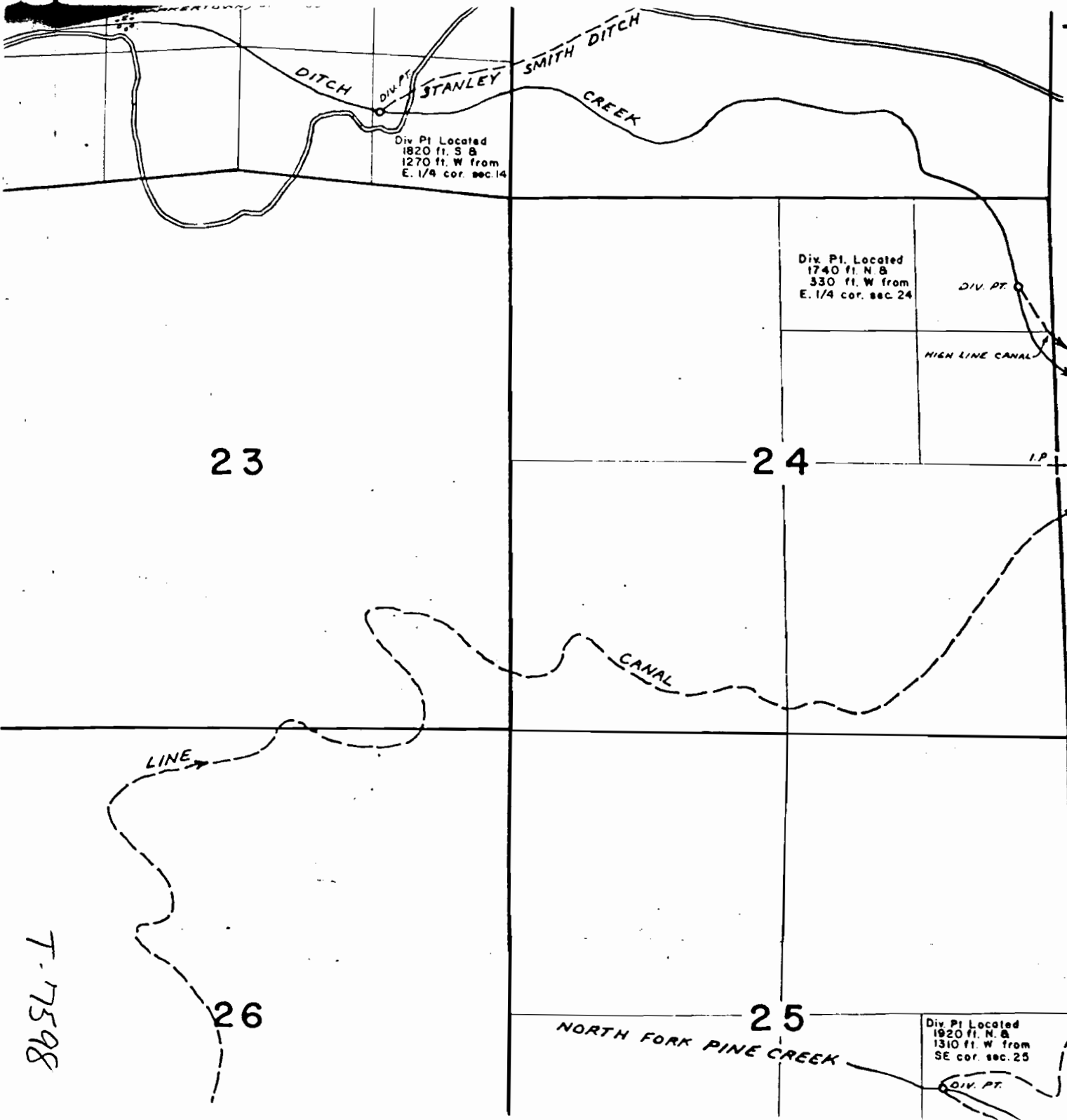
1" = 1320'

Copied from Hood River Adjudication Maps

RECEIVED

JUL 17 1996

WATER RESOURCES DEPT.
SALEM, OREGON



8654 T-17598

T. 2N., R. 9E., W.M.

Copied from Hood River Adjudication Maps



1" = 1320'

28

CANAL

27

UNNAMED STREAM

Div. Pt. Located
5110 ft. N. &
1060 ft. W. from
SE cor. sec. 34

DIV. PT.

DIV. PT.

Div. Pt. Located
4700 ft. N. &
2820 ft. W. from
SE cor. sec. 34

LINE

26

HIGH

RECEIVED

JUL 17 1996

WATER RESOURCES DEPT.
SALEM, OREGON

33

34

DEAD

35

T-7598

RECEIVED

JUL 17 1996

WATER RESOURCES DEPT
SALEM, OREGON

T. 2N., R. 9E., W.M.

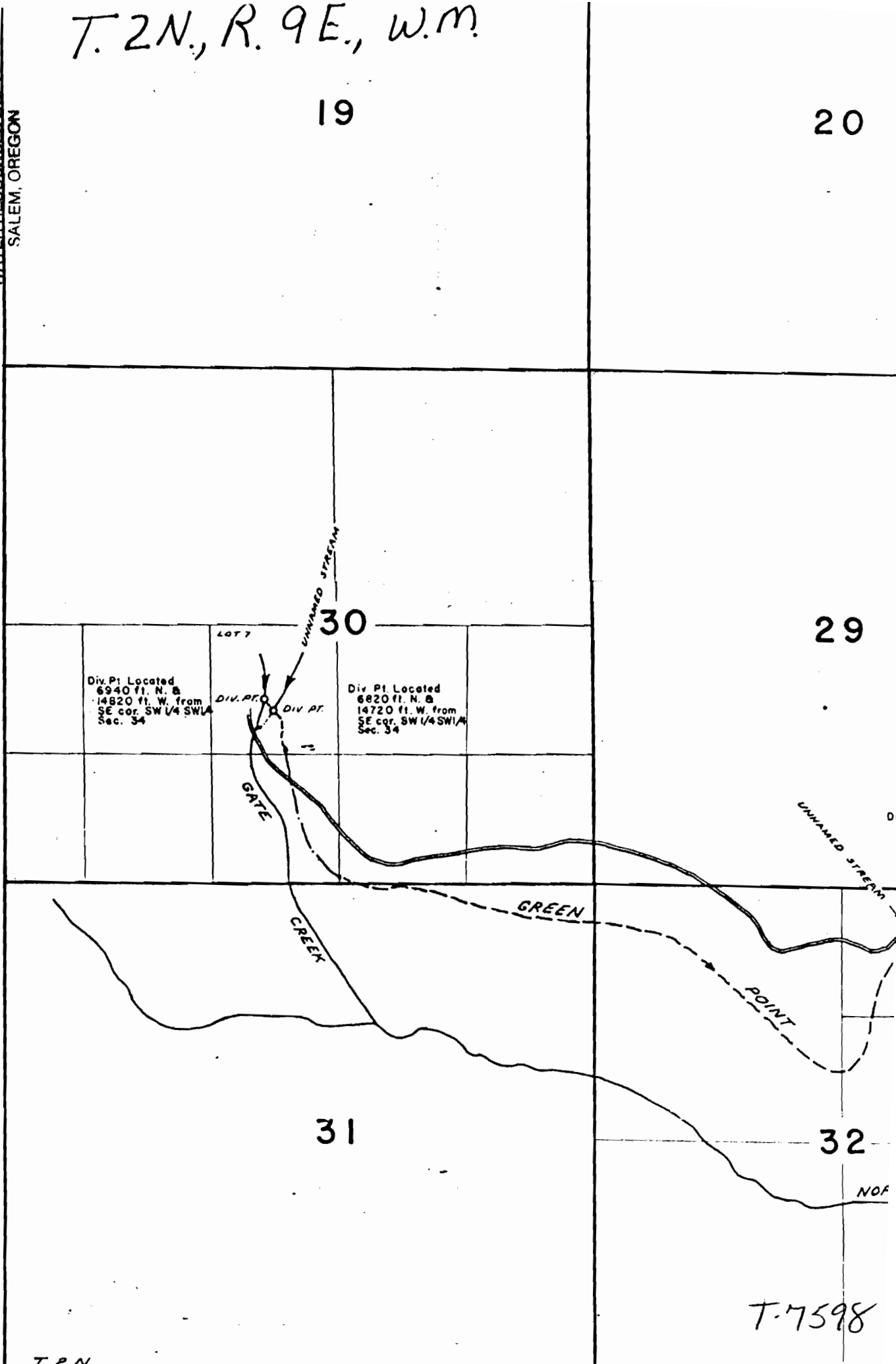
19

20



" = 1320'

copied from
ood River
adjudication
MAPS



T. 2N.

T. 7598