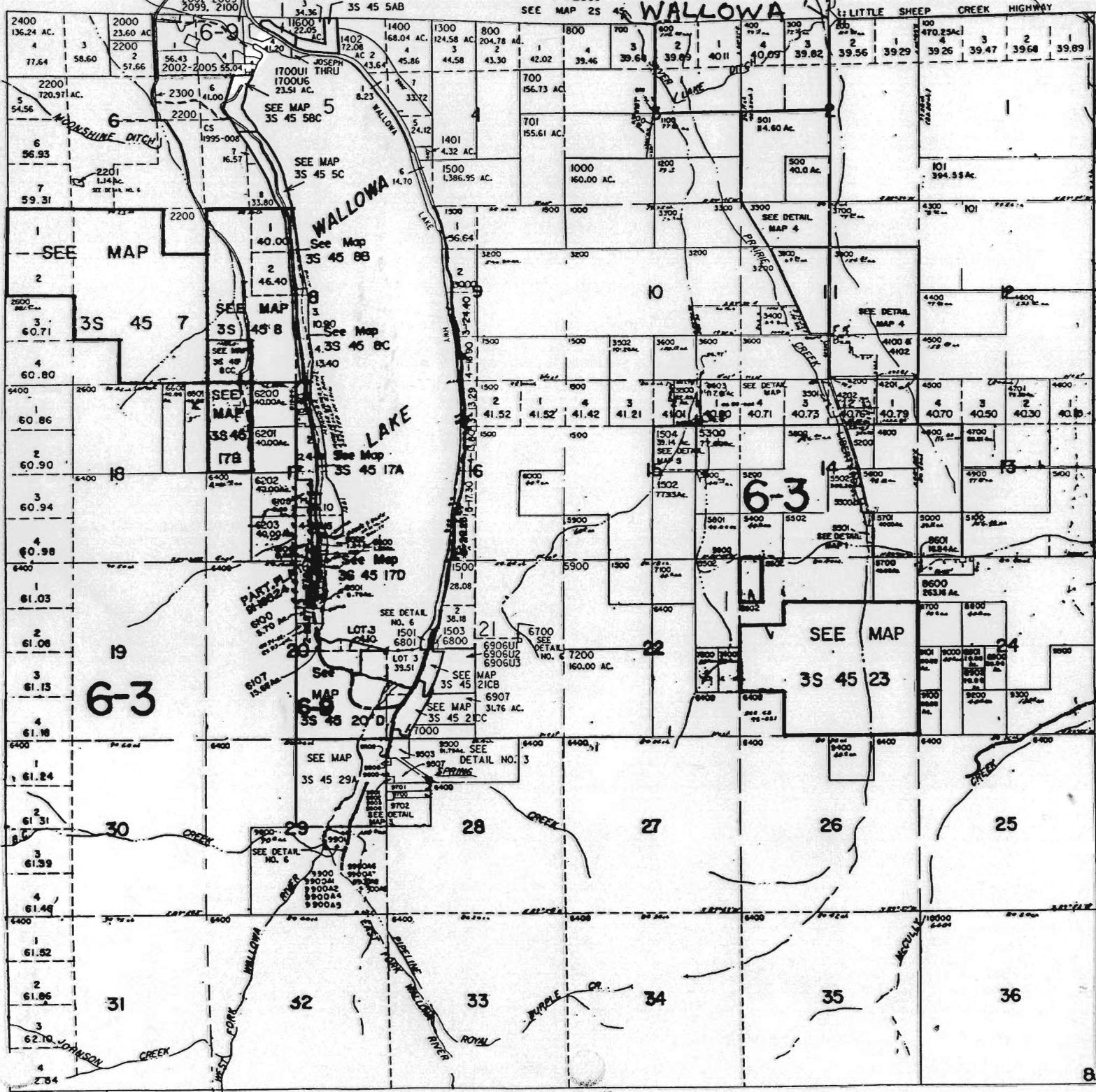
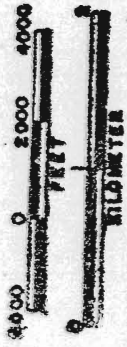


SCALE 1:48000



35 45

CANCELLED NOS.

- 2500
- 2700 THRU 2738
- 2800 THRU 2806
- 2900 THRU 3105
- 3504
- 4000
- 4101
- 4203
- 5101
- 5301
- 6101
- 6102 THRU 6104
- 6300 THRU 6313
- 6900
- 6901
- 6902
- 6903
- 6904
- 6905
- 7001
- 7002
- 7500 THRU 8500
- 8600
- 8602
- 9504

RECEIVED JUN 26 1997 DEPT. OF REVENUE STATE OF OREGON

35 45 8 INDE

SEE MAP 35 45