

A & T FILMED 3/23/96

RECEIVED

AUG - 7 1996

WATER RESOURCES DEPT.
SALEM, OREGON

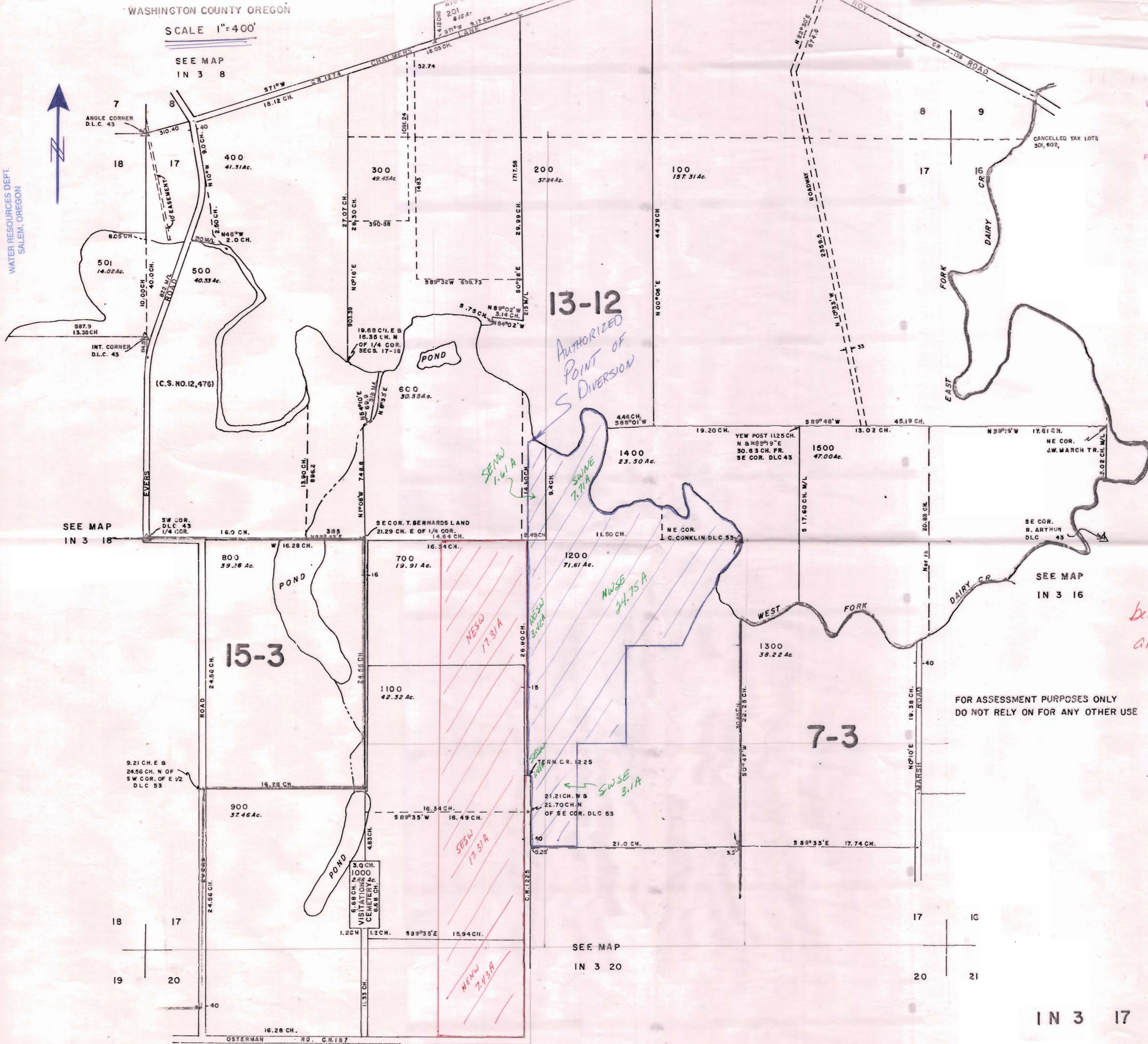
WASHINGTON COUNTY OREGON

SCALE 1"=400'

SEE MAP
IN 3 8

WASHINGTON COUNTY
DEPARTMENT OF
ASSESSMENT & TAXATION
AUG 2 1996

FOR ASSESSMENT PURPOSES
ONLY. DO NOT RELY ON
FOR OTHER USE



FOR ASSESSMENT PURPOSES ONLY
DO NOT RELY ON FOR ANY OTHER USE

42.07 A water rights
being transferred from
area in RED TO
Area in BLUE

SEE MAP
IN 3 20

IN 3 17