

WATER RIGHTS TRANSFER APPLICATION MAP
 FOR
 PINE MEADOW RANCH INC.
 SECTION 8, TOWNSHIP 15 SOUTH, RANGE 10 EAST

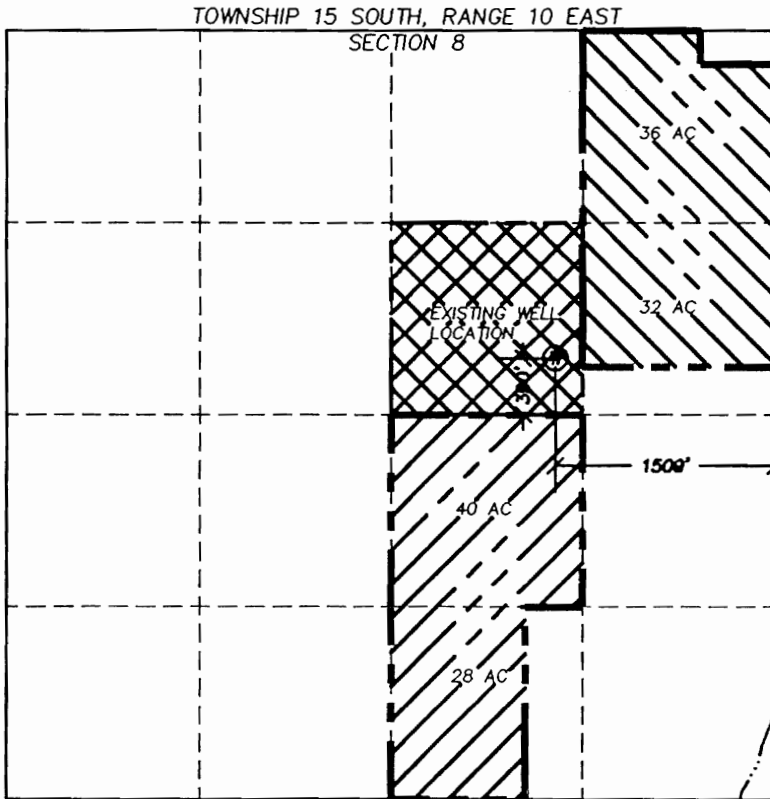
RECEIVED

APR 17 1997

WATER RESOURCES DEPT
 SALEM, OREGON

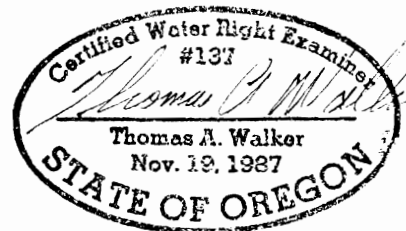


1" = 1320'






SQUAW CREEK
 CORN
 T-7750

NOTE: THIS MAP WAS PREPARED FOR THE PURPOSE OF IDENTIFYING THE LOCATION OF WATER RIGHTS. THIS MAP IS NOT INTENDED TO PROVIDE DIMENSIONS OR THE LOCATION OF PROPERTY OWNERSHIP LINES.



LEGEND:

-  TRANSFER PRIMARY WATER RIGHTS FROM THIS AREA
-  TRANSFER 68 AC WELL RIGHTS AS SUPPLEMENTAL TO PRIMARY SQUAW CREEK RIGHTS, THIS AREA
-  40 ACRES OF WELL IRRIGATION AREA NOT TRANSFERRED