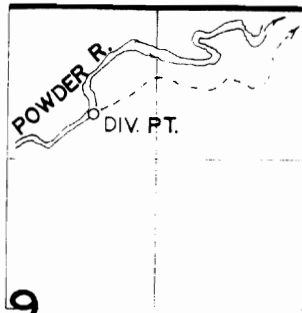
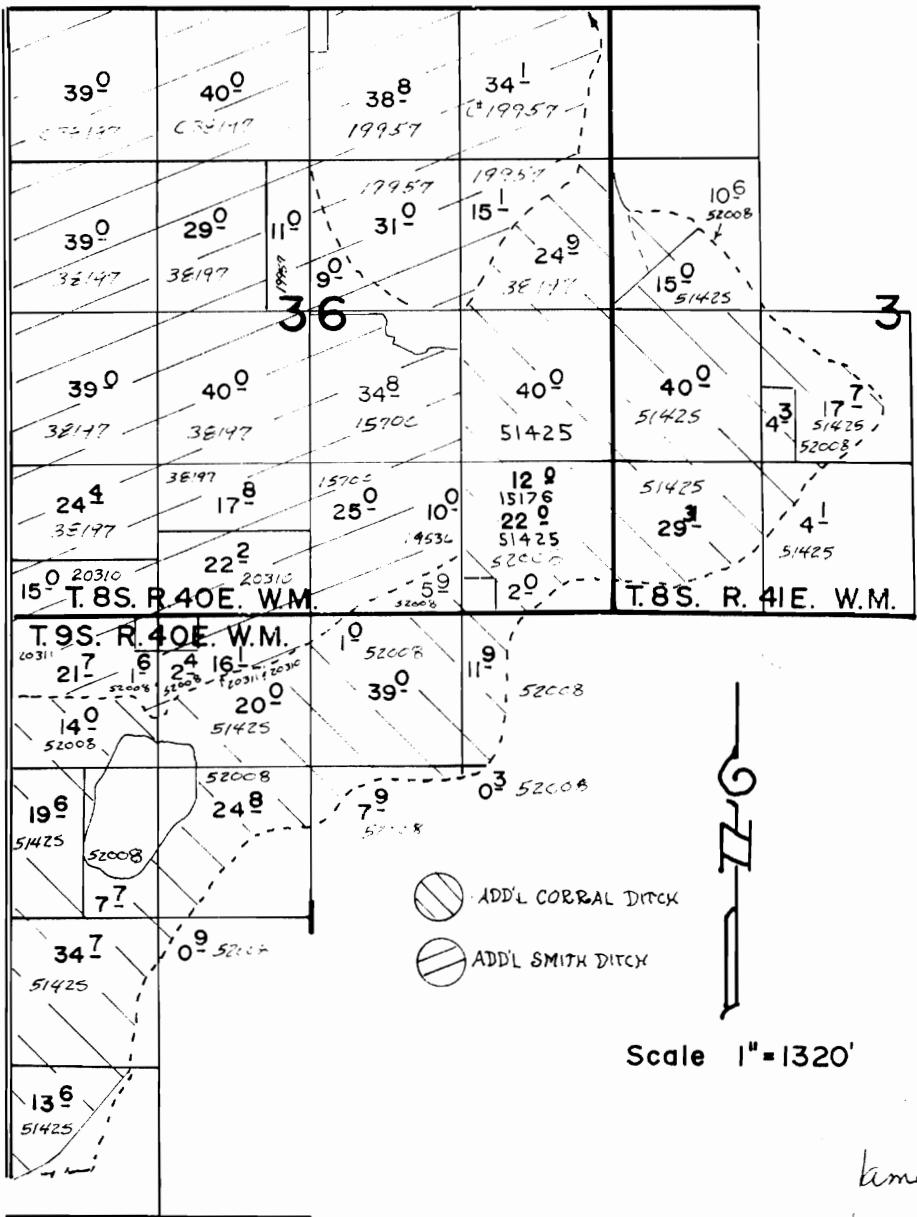


MAP TO ACCOMPANY
FOR TRANSFER IN
ADDITIONAL POINTS OF
DIVERSION IN NAME OF
PEYRON RANCH



CORRAL DITCH-50'N. &
2560'W. FROM CENTER
SEC. 9 T. 9S., R. 40E., W.M.

SMITH DITCH-945'S. &
1865'W. FROM NE COR.
SEC 19, T. 10S., R. 40E., W.M.



7790