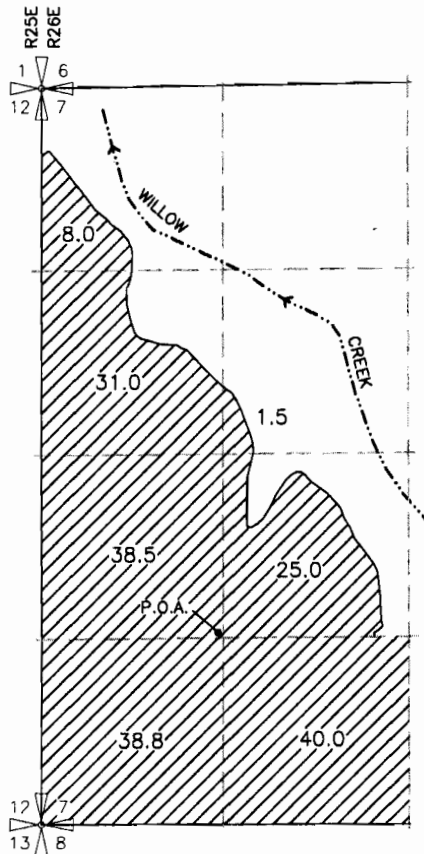


PERMIT AMENDMENT MAP  
 TRANSFER T-8352  
 T2S, R26E WM  
 MORROW CO  
 AMENDED 10/19/2009

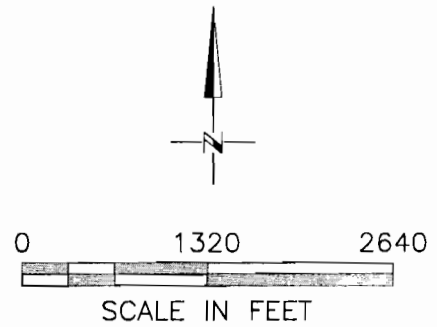
FROM

RECEIVED  
 2009  
 WATER RESOURCES DEPT.  
 SALEM, OREGON



POINT OF APPROPRIATION

AUTHORIZED WELL  
 LOCATED 1330'N AND 1310'E FROM THE SW CORNER  
 OF SEC 7



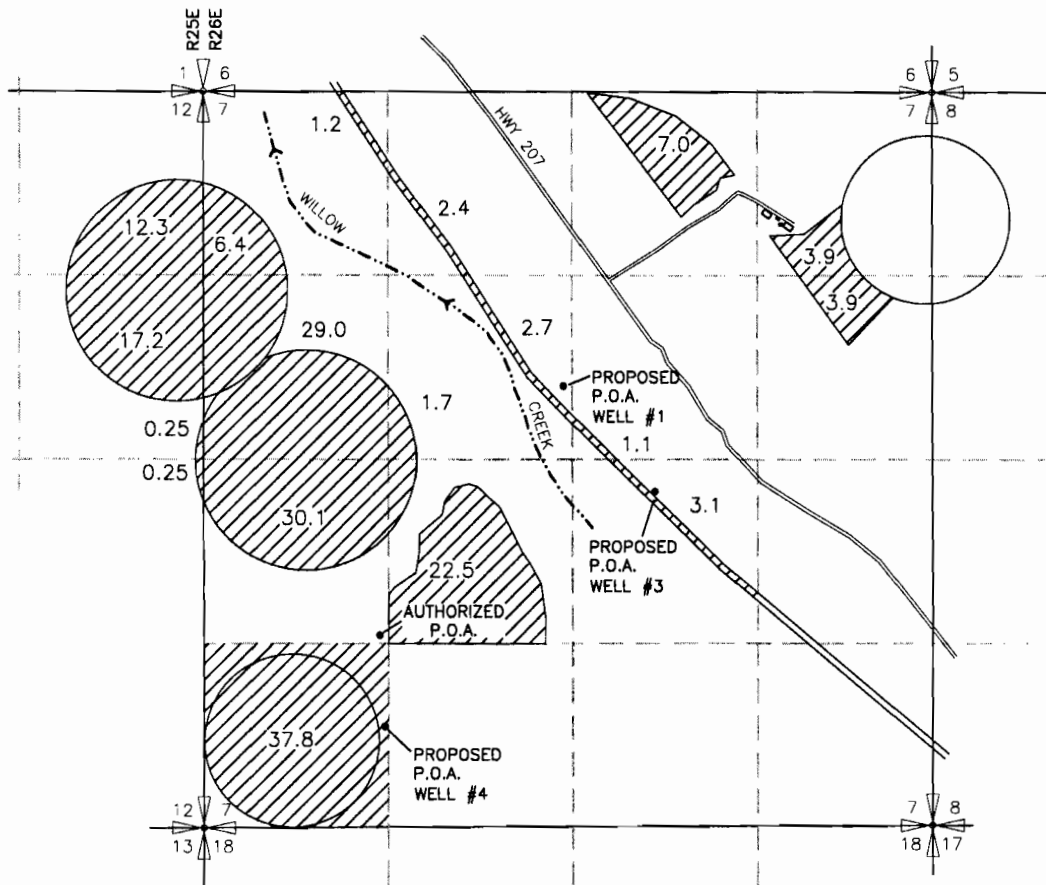
NOTE:  
 THE PURPOSE OF THIS MAP IS TO IDENTIFY THE APPROXIMATE LOCATION  
 OF THE WATER RIGHT. IT IS NOT INTENDED TO PROVIDE INFORMATION  
 RELATIVE TO THE LOCATION OF PROPERTY OWNERSHIP BOUNDARY LINES.

DRAWING: F:\30-08-016 - Porfily Water Rights Consulting\ -00 Misc Engineering\Cad\THOMPSON\30-08-016 Thompson from.dwg  
 PRINTED BY: rwillard on 10/19/09 02:09 PM

PERMIT AMENDMENT MAP  
 TRANSFER T-8352  
 T2S, R26E WM  
 MORROW CO  
 AMENDED 10/19/2009

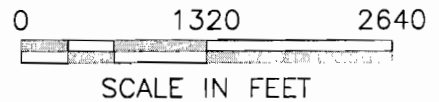
RECEIVED  
 WATER RESOURCES DEPT.  
 COLUMBIA, MISSOURI

TO



PROPOSED POINTS OF APPROPRIATION

- WELL #1  
 LOCATED 2110'S AND 2630'W FROM THE NE CORNER OF SEC 7
- WELL #3  
 LOCATED 2870'S AND 1980'W FROM THE NE CORNER OF SEC 7
- WELL #4  
 LOCATED 725'N AND 1310'E FROM THE SW CORNER OF SEC 7



NOTE:

THE PURPOSE OF THIS MAP IS TO IDENTIFY THE APPROXIMATE LOCATION OF THE WATER RIGHT. IT IS NOT INTENDED TO PROVIDE INFORMATION RELATIVE TO THE LOCATION OF PROPERTY OWNERSHIP BOUNDARY LINES.

DRAWING: F:\30-08-016 - Porfily Water Rights Consulting\00 Misc Engineering\Cad\THOMPSON\30-08-016 Thompson to.dwg  
 PRINTED BY: rwillard on 10/19/09 02:17 PM