

RECEIVED

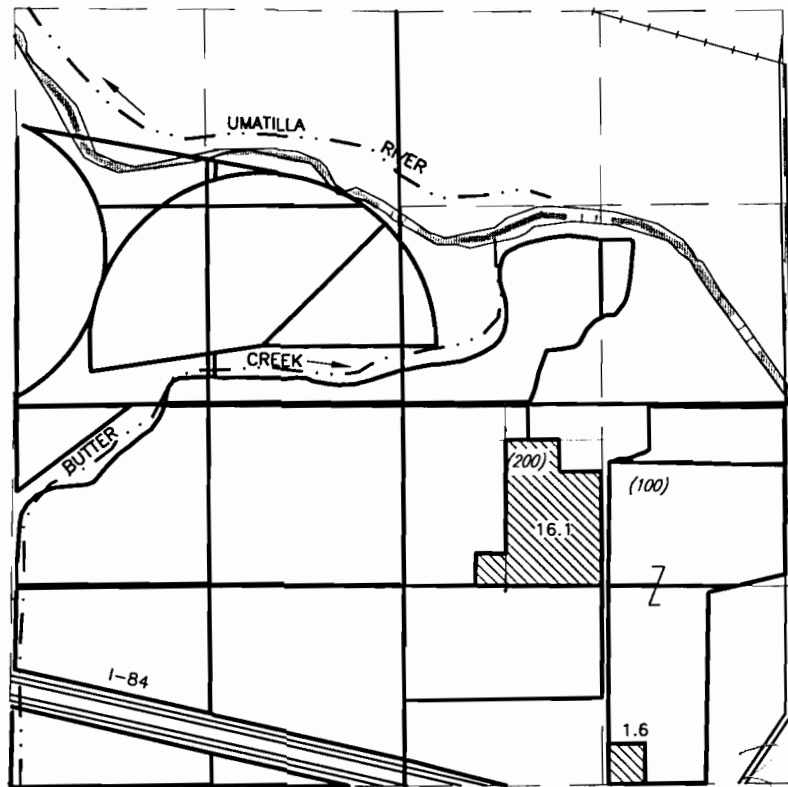
AUG 02 1999

WATER RESOURCES DEPT.
SALEM, OREGON

WESTLAND IRRIGATION DISTRICT TEMPORARY TRANSFER MAP MUELLER TO NEWMAN

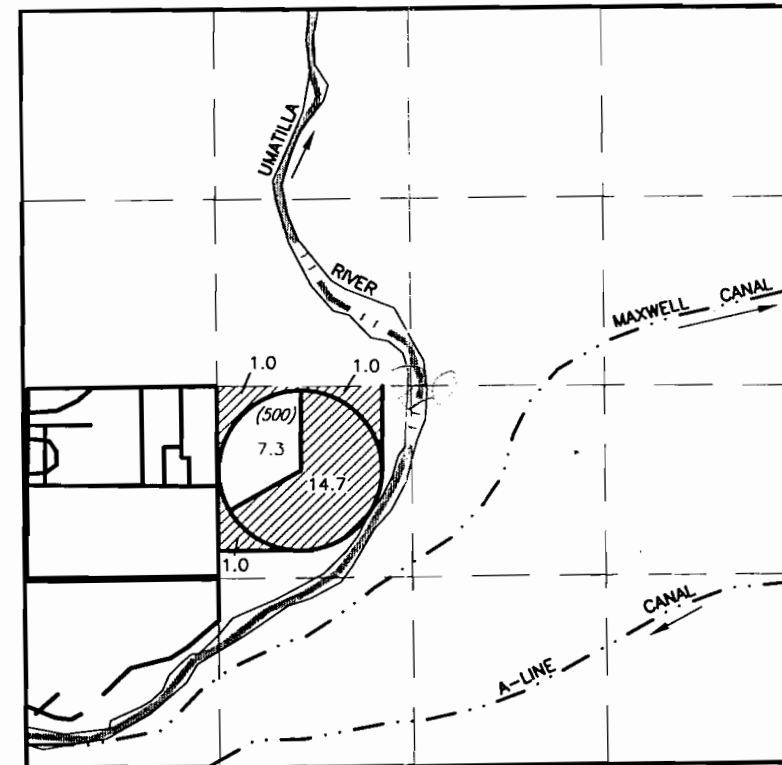
T-8317

T 4N., R 28E., W.M.



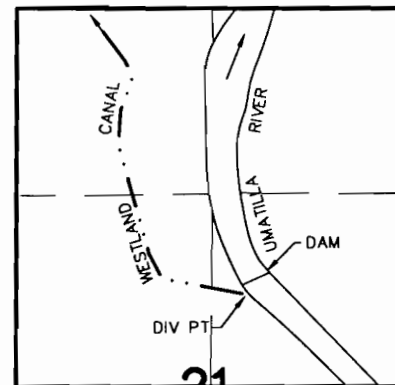
FROM
1903

T 4N., R 28E., W.M.



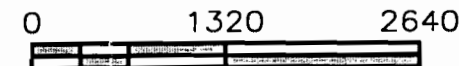
TO
1903

T.3N., R.29E., W.M.



21

DIV PT LCT N.76°45'56"E. 2913.19' FROM W.1/4 COR. SEC 21
1907 WESTLAND IRRIGATION DISTRICT AND PERMIT
7400 McKay



SCALE IN FEET

NOTE: THE PURPOSE OF THIS MAP IS TO IDENTIFY THE APPROXIMATE LOCATION OF THE WATER RIGHT. IT IS NOT INTENDED TO PROVIDE INFORMATION RELATIVE TO THE LOCATION OF PROPERTY OWNERSHIP BOUNDARY LINES.

7/27/99
3522.055
3522055M.DWG