

NW 1/4 SE 1/4 SEC.11 T.36S. R.1W. W.M.  
JACKSON COUNTY

361W11DB  
EAGLE POINT

IMPORTANT  
THIS MAP FOR ASSESSMENT  
AND TAXATION PURPOSES  
ONLY

SCALE: 1 INCH = 100 FEET

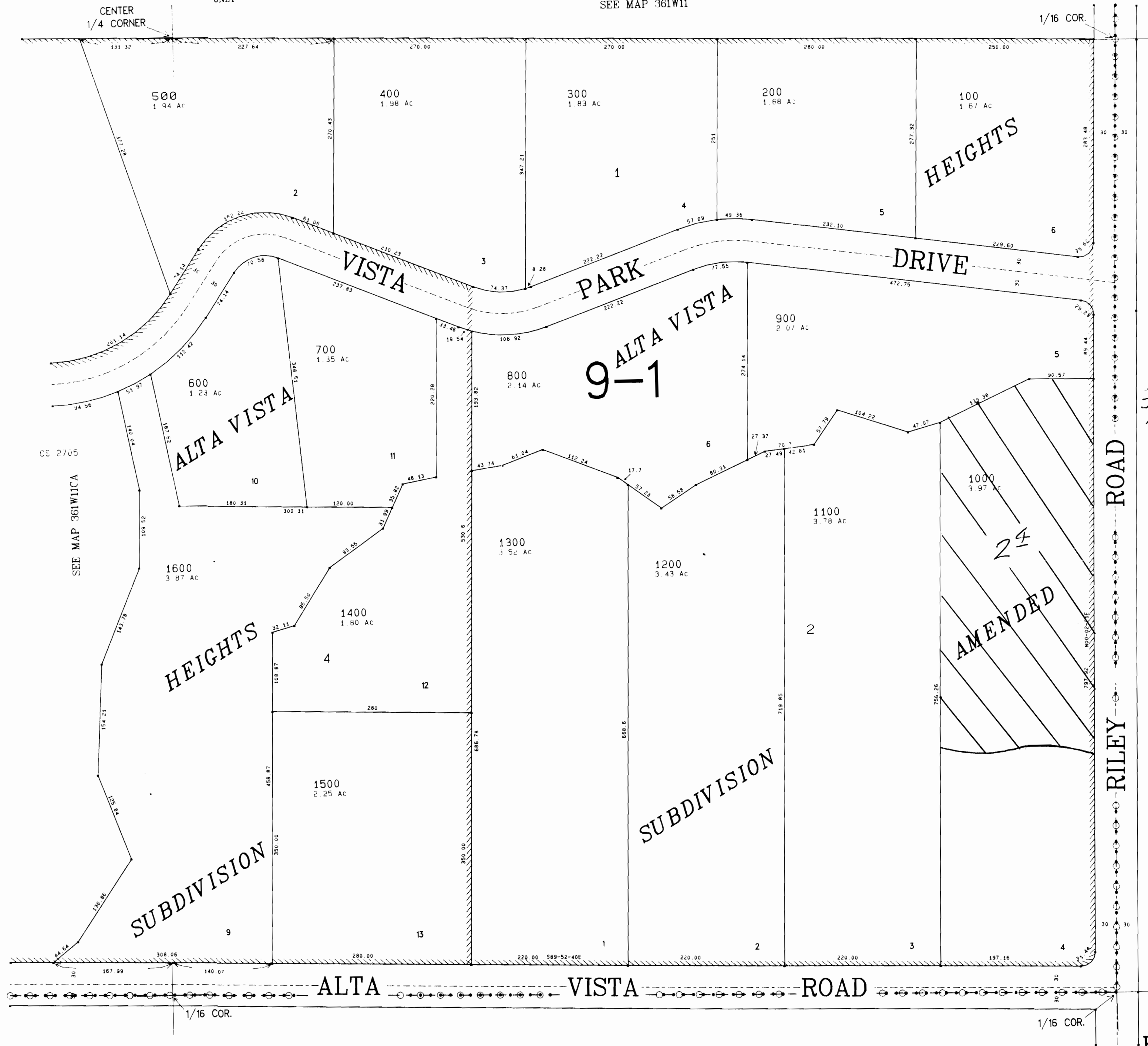
SEE MAP 361W11

TRANSFER 7662

RECEIVED  
MAR 28 1995  
LAND RESOURCES DEPT.  
SALEM, OREGON

T-5733

CANCELLED TAX  
LOT NUMBERS:



EAGLE POINT  
IRRIGATION  
DISTRICT

SEE MAP 361W11  
LAND OWNER OF TRACT  
1600  
DEBBIE NEWSOM  
2231 ALTA VISTA RD  
EAGLE POINT, OR

361W11DB  
EAGLE POINT

JS JUNE 1994  
REVISED APRIL 1995

SEE MAP 361W11