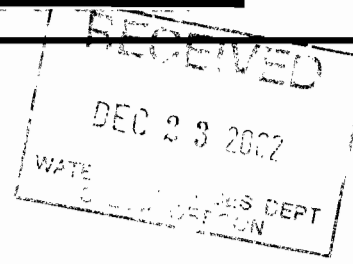


FINAL PROOF SURVEY  
AND  
CLAIM OF BENEFICIAL USE



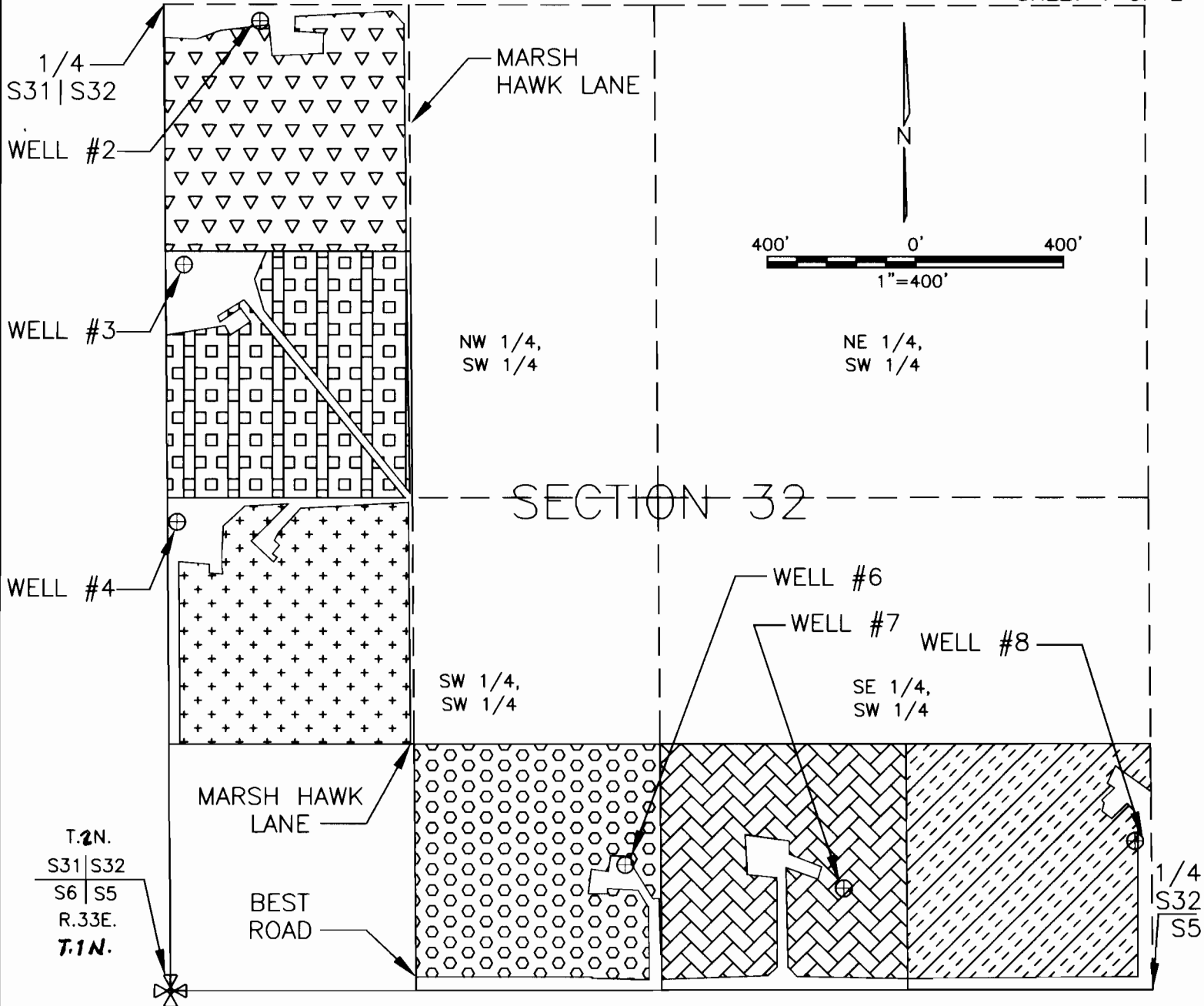
LOCATED IN

NW 1/4, SW 1/4; SW 1/4, SW 1/4 AND SE 1/4, SW 1/4, SECTION 32, T.1N., R.33E., W.M.,  
UMATILLA COUNTY, OREGON

APPLICANTS: DAVID L. AND SANDRA L. UMBARGER

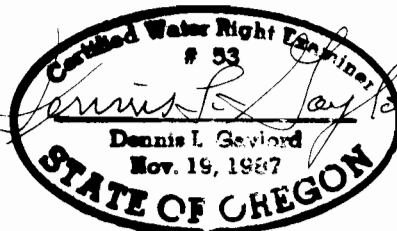
TRANSFER 8373

SPECIAL ORDER VOLUME 54, PAGE 297  
SHEET 1 OF 2



THIS MAP IS PREPARED  
FOR THE EXPRESS  
PURPOSE TO SHOW WATER  
APPROPRIATION AND USE.  
IT IS NOT INTENDED TO  
SHOW OR LOCATE  
PROPERTY OWNERSHIP  
LINES.

©



Renews 6/30/2003

DENNIS L. GAYLORD,  
CWRE  
71614 S.W. LAKE DRIVE  
PENDLETON, OR 97801  
(541)-276-6260  
NOVEMBER, 2002

Mill Creek Drafting

# FINAL PROOF SURVEY AND CLAIM OF BENEFICIAL USE

RECEIVED  
DEC 23 2002  
WATER RESOURCES DEPT  
Salem, Oregon

LOCATED IN

NW 1/4, SW 1/4; SW 1/4, SW 1/4 AND SE 1/4, SW 1/4, SECTION 32, T.1N., R.33E., W.M.,  
UMATILLA COUNTY, OREGON

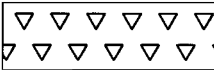
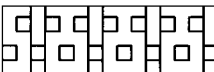
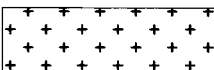
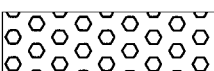


APPLICANTS: DAVID L. AND SANDRA L. UMBARGER

TRANSFER 8373

SPECIAL ORDER VOLUME 54, PAGE 297  
SHEET 2 OF 2

## LEGEND

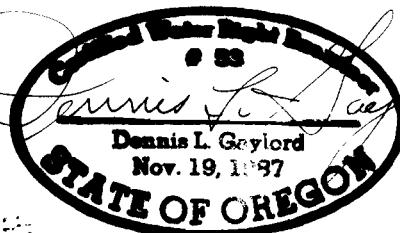
———— SECTION LINE  
- - - - - 1/16TH LINE  
⊗ SECTION CORNER  
⊕ WELL

LEGEND	CORNER TIE	RECEIVING LANDOWNER	TAX LOT NUMBER
 = AREA IRRIGATED FROM WELL #2, 8.95 ACRES. NW 1/4, SW 1/4 SECTION 32.	45' SOUTH & 260' EAST OF WEST 1/4 CORNER OF SECTION 32.	LARRY AND LEE ANN BAARSTAD	11501
 = AREA IRRIGATED FROM WELL #3, 8.52 ACRES. NW 1/4, SW 1/4 SECTION 32.	705' SOUTH & 55' EAST OF WEST 1/4 CORNER OF SECTION 32.	MEL AND JULIE WUNDERLICH	11502
 = AREA IRRIGATED FROM WELL #4, 8.59 ACRES. SW 1/4, SW 1/4 SECTION 32.	1,270' NORTH & 40' EAST OF SOUTHWEST CORNER OF SECTION 32.	DANIEL AND PAMELA DUSO	11503
 = AREA IRRIGATED FROM WELL #6, 9.21 ACRES. SW 1/4, SW 1/4 SECTION 32.	340' NORTH & 1,225' EAST OF SOUTHWEST CORNER OF SECTION 32.	THOMAS AND KAREN DEMIA NEW	11505
 = AREA IRRIGATED FROM WELL #7, 9.10 ACRES. SE 1/4, SW 1/4 SECTION 32.	275' NORTH & 835' WEST OF SOUTH 1/4 CORNER OF SECTION 32.	MARK LEWIS	11506
 = AREA IRRIGATED FROM WELL #8, 9.01 ACRES. SE 1/4, SW 1/4 SECTION 32.	405' NORTH & 50' WEST OF SOUTH 1/4 CORNER OF SECTION 32.	SUSAN SIMMONS	11507

TOTAL AREA TRANSFERRED: 53.38 ACRES

THIS MAP IS PREPARED  
FOR THE EXPRESS  
PURPOSE TO SHOW WATER  
APPROPRIATION AND USE.  
IT IS NOT INTENDED TO  
SHOW OR LOCATE  
PROPERTY OWNERSHIP  
LINES.

©



Renews 6/30/2003

DENNIS L. GAYLORD,  
CWRE  
71614 S.W. LAKE DRIVE  
PENDLETON, OR 97801  
(541)-276-6260  
NOVEMBER, 2002

Mill Creek Drafting