

SW1/4 NE1/4 SEC. 10 T.9S. R.45E. W. M.  
BAKER COUNTY

9 4!

1" = 100'

61-17

SEE MAP 9 45 10AB

CO. RD. 1140

CO. RD. AS PER  
W.C. JASPER'S ADD.

RD.

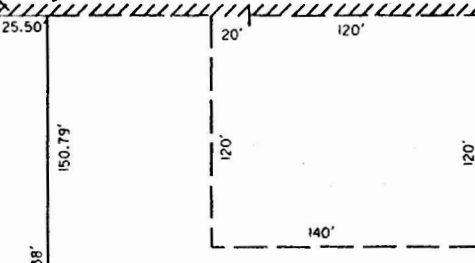
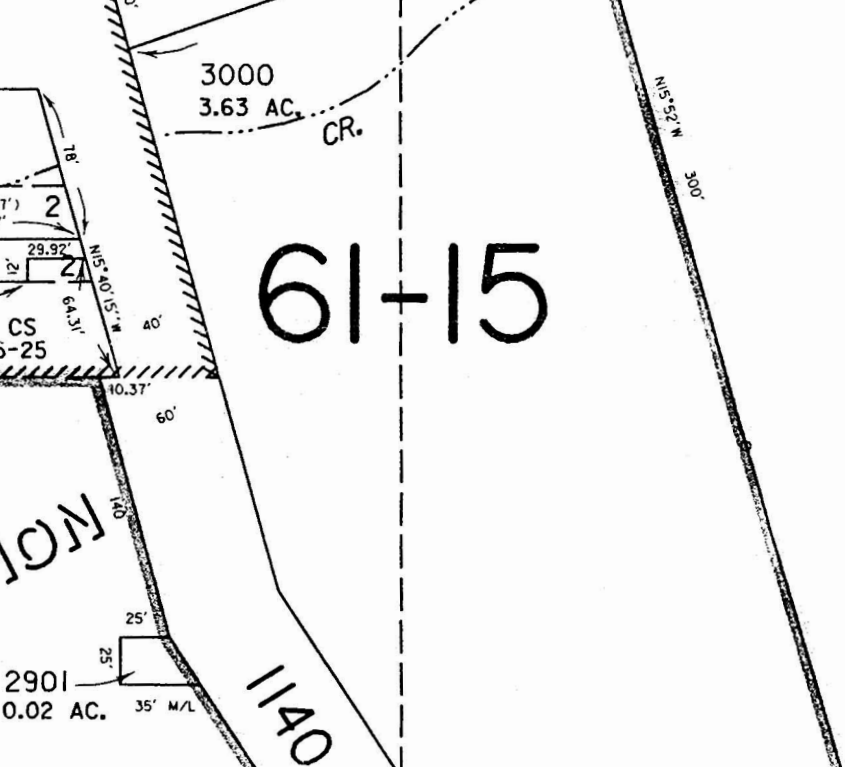
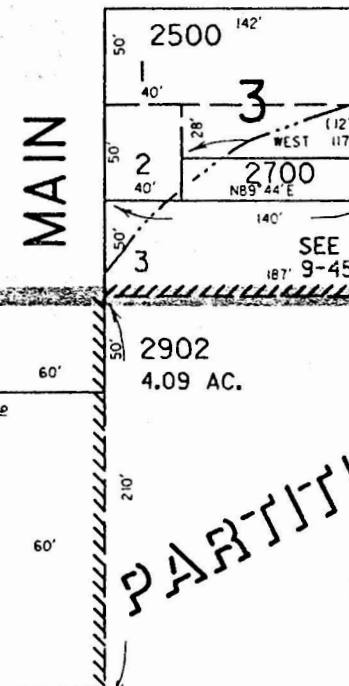
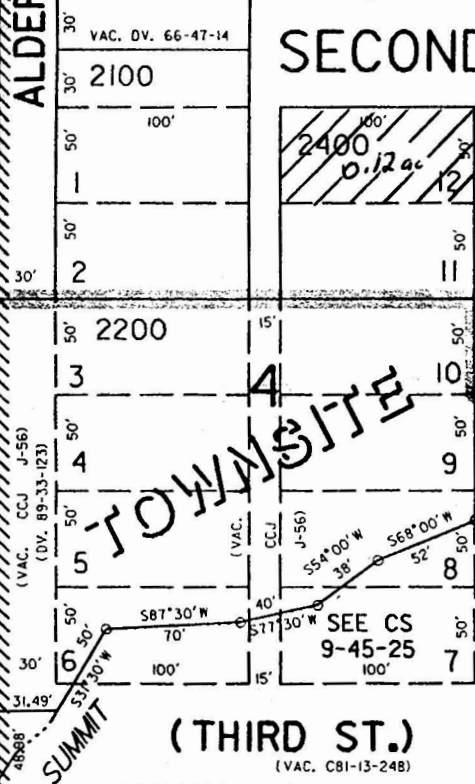
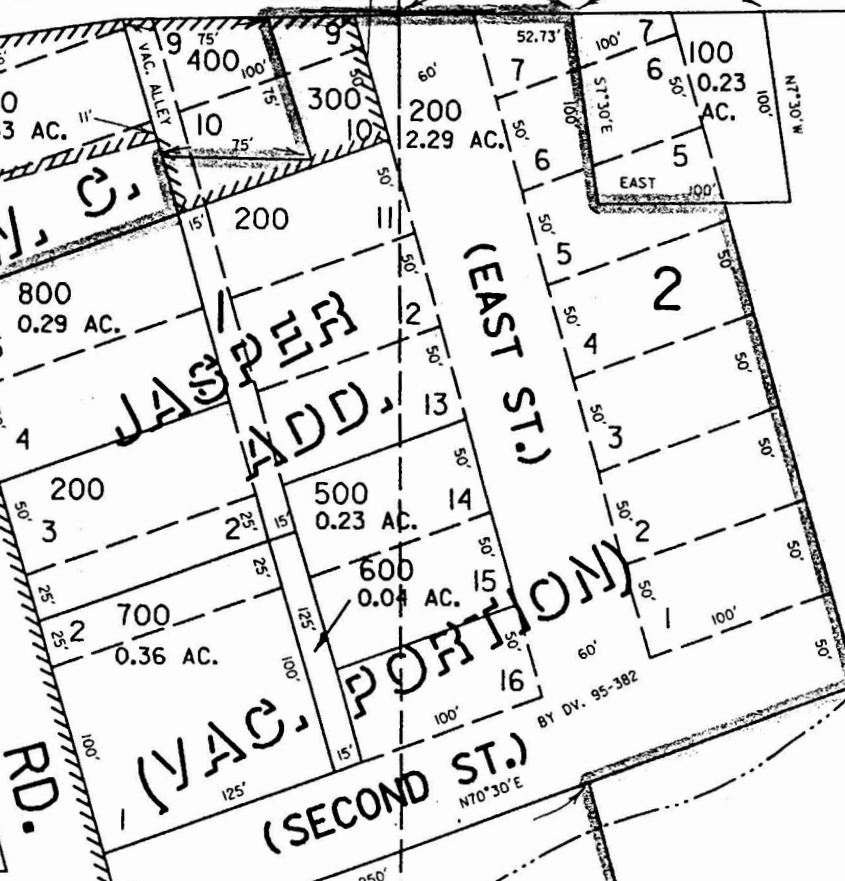
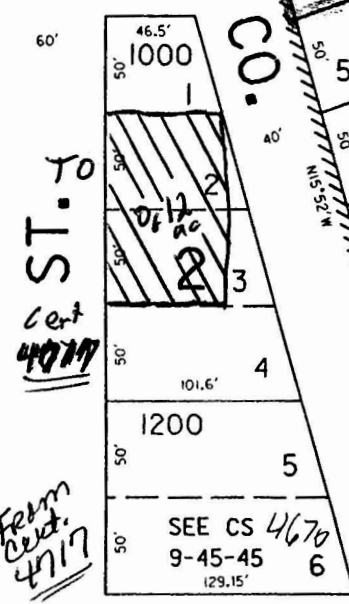
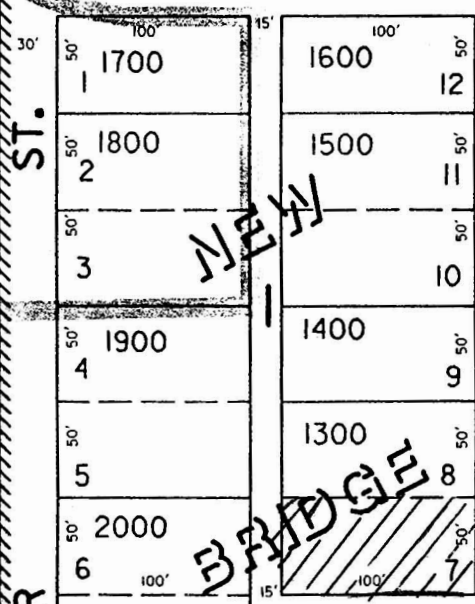
1/16 COR.

924

CANC  
1100  
2300  
2600  
2800

FIRST ST.

61-17



61-17

61-15

RECEIVED  
MAY 28 2002  
WATER RESOURCES DEPT.  
SALEM, OREGON

SEE MAP 9 45 10

ALDER

SUMMIT

NEW BRIDGE

TOWNSITE

PLAT

NO. 1995-022

T-9135

SEE MAP 9 45 10