

# STANFIELD IRRIGATION DISTRICT FROM HARRIS TO WRIGHT TRANSFER APPLICATION MAP

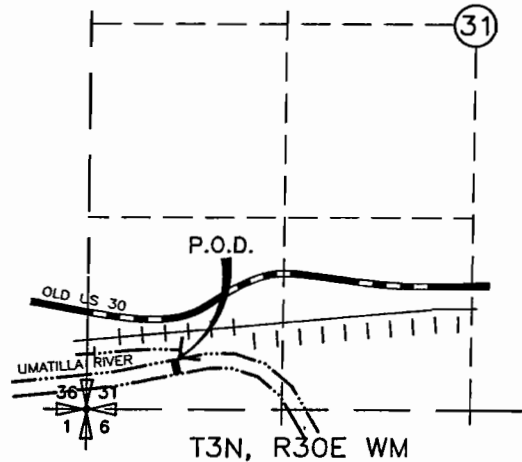
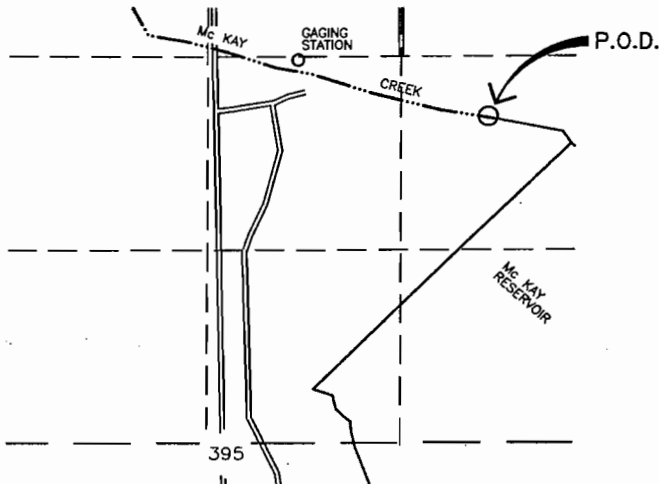
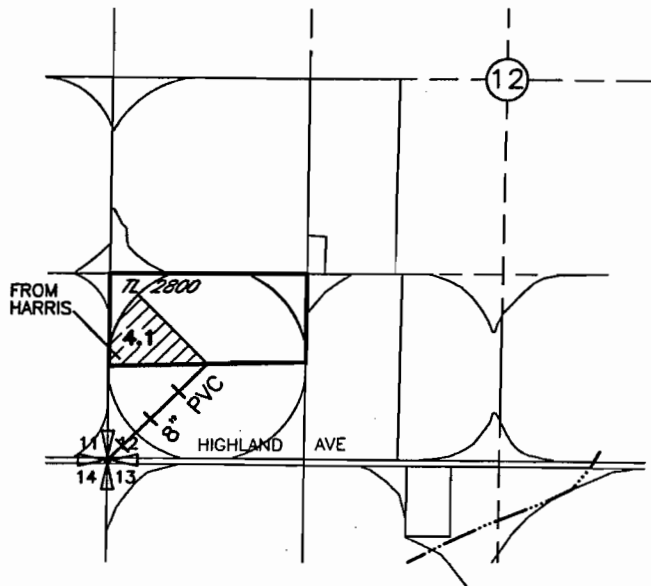
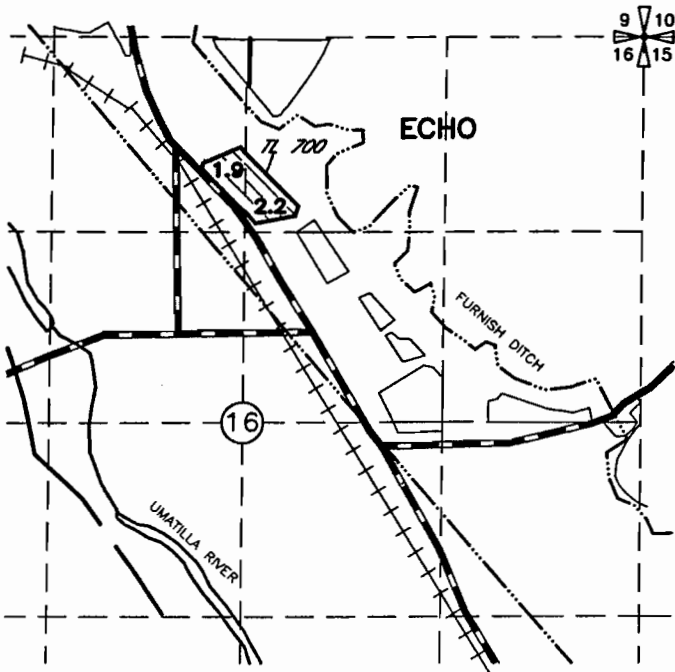
RECEIVED

JUN 13 2002

WATER RESOURCES DEPT.  
SALEM, OREGON

FROM HARRIS  
T3N, R29E WM

TO WRIGHT  
T4N, R29E WM



T2N, R32E WM  
P.O.D. McKAY RESERVOIR  
NW 1/4 SE 1/4 SEC 34

P.O.D. FURNISH DITCH  
LOCATED 380' NORTH AND 650' EAST  
FROM THE SW CORNER SEC 31



0 1320 2640

SCALE IN FEET

NOTE:  
THE PURPOSE OF THIS MAP IS TO IDENTIFY THE APPROXIMATE LOCATION  
OF THE WATER RIGHT. IT IS NOT INTENDED TO PROVIDE INFORMATION  
RELATIVE TO THE LOCATION OF PROPERTY OWNERSHIP BOUNDARY LINES.

**SCM** Consultants, Inc.

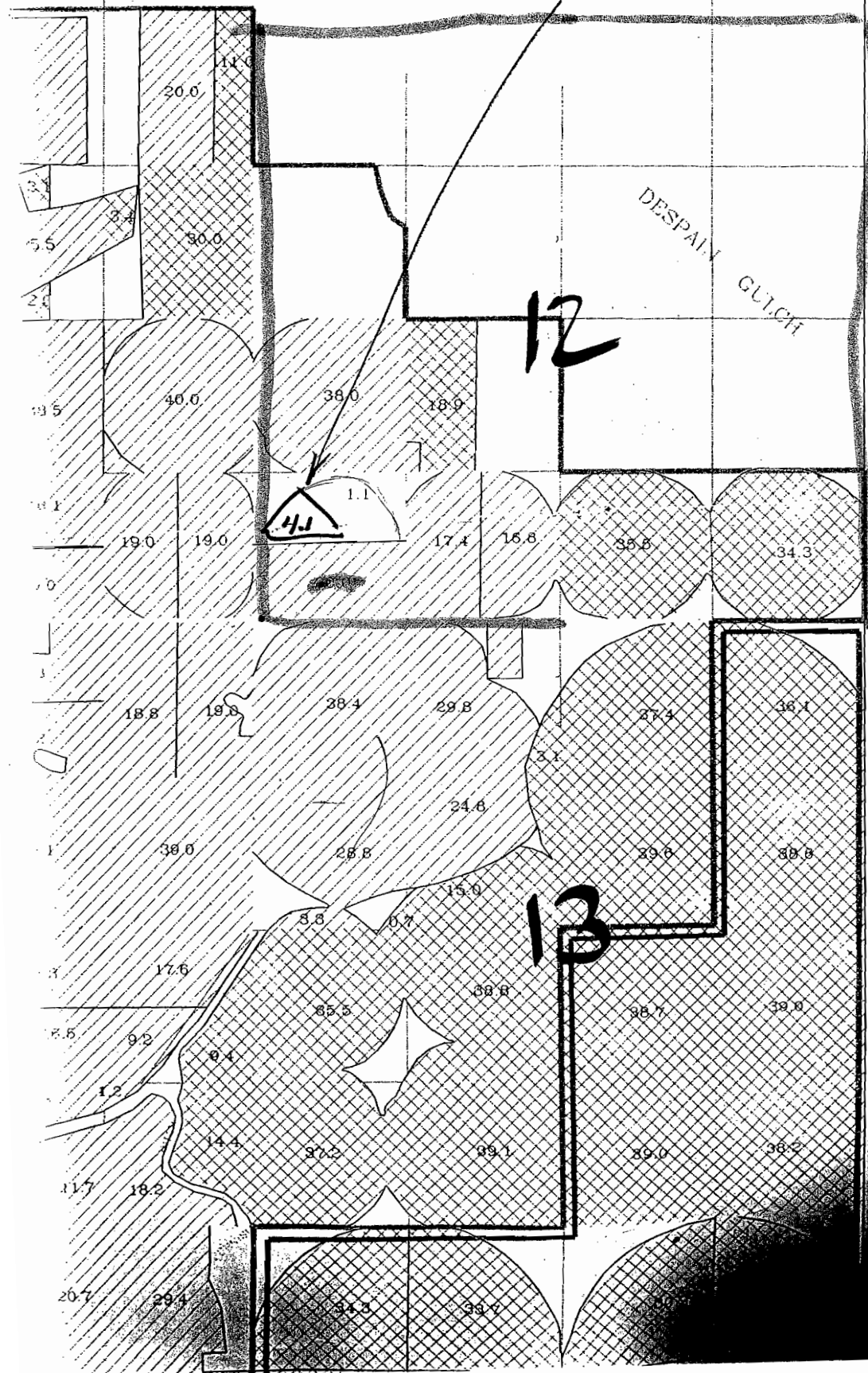
T 9147  
Architects & Engineers  
Kennewick, WA 99336

3522.141  
12/17/01  
3522022A.DWG

JUN 13 2002  
WATER RESOURCES DEPT.  
SALEM, OREGON

WATER RESOURCES DEPT.  
SALEM, OREGON

TO CARS



NO CONFLICTS  
w/ANY RIGHTS

T 9147