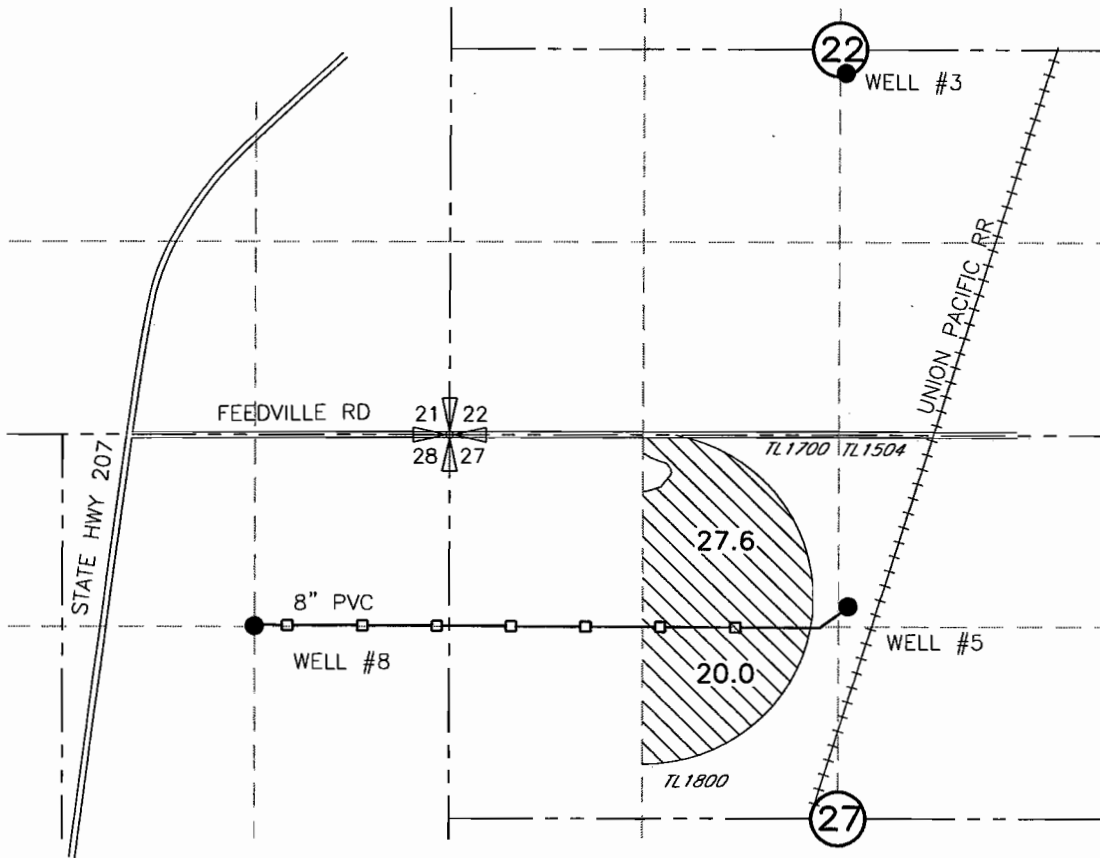


G-2 FARMING, LLC
 CHANGE IN POINT OF APPROPRIATION
 TRANSFER APPLICATION MAP
 FOR PERMIT G-9456
 CERTIFICATE 55023
 T4N, R28E WM

RECEIVED
 JUL 18 2002
 WATER RESOURCES DEPT.
 SALEM, OREGON



AUTHORIZED POINT OF APPROPRIATION
 WELL #3 LOCATED 2480' NORTH AND 2680' EAST FROM THE
 SW CORNER OF SEC 22

PROPOSED POINT OF APPROPRIATION
 WELL #5 LOCATED 1180' SOUTH AND 2700' EAST FROM THE
 NW CORNER OF SEC 27

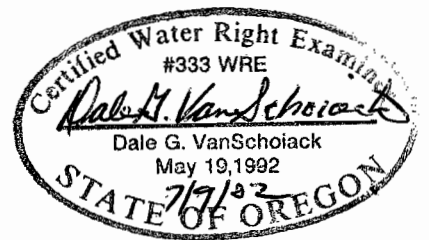
 AREA BEING IRRIGATED



0 1320 2640



SCALE IN FEET



NOTE:
 THE PURPOSE OF THIS MAP IS TO IDENTIFY THE APPROXIMATE LOCATION
 OF THE WATER RIGHT. IT IS NOT INTENDED TO PROVIDE INFORMATION
 RELATIVE TO THE LOCATION OF PROPERTY OWNERSHIP BOUNDARY LINES.



Consultants, Inc.

T 9190

Architects & Engineers
 Kennewick, WA 99336

3522.151
 07/02/02
 3522151LLC.DWG