

RECEIVED

JAN 10 2000
WATER RESOURCES DEPT
SALEM, OREGON

1998
COOK TO HALE TEMPORARY TRANSFER

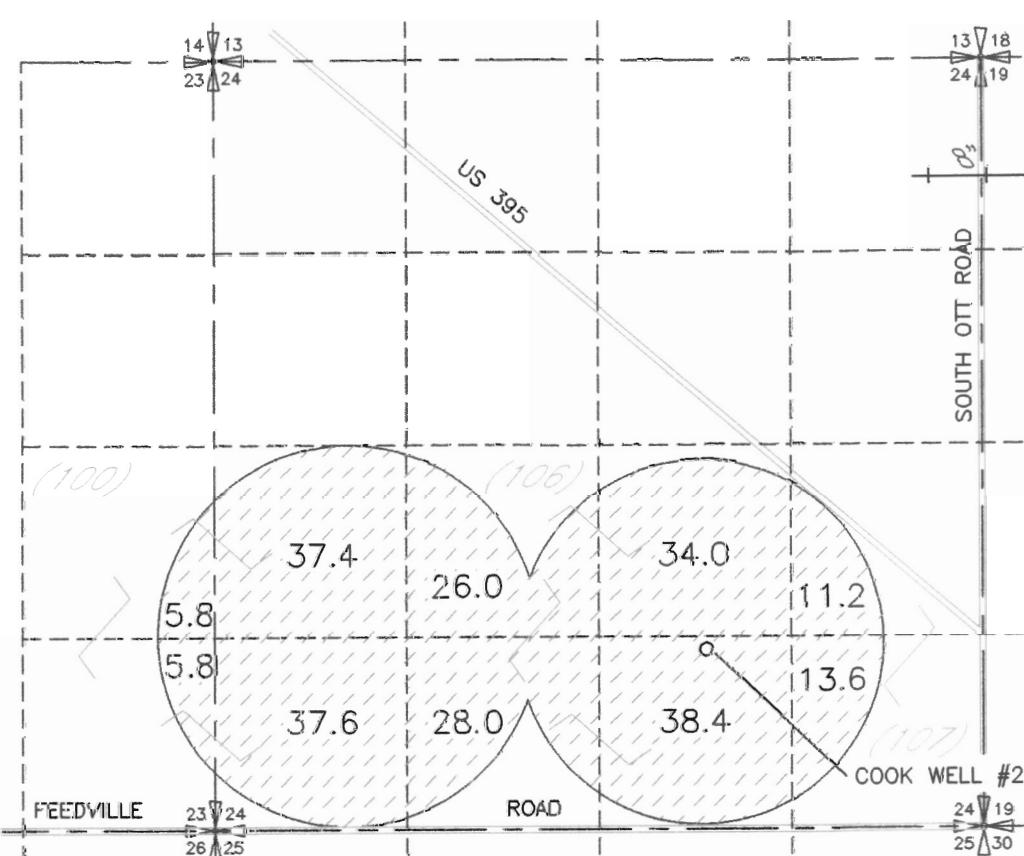
2000

ECHO IRRIGATION DISTRICT TEMPORARY TRANSFERS

WELL LEGEND

- HALE NO ① 4340'N + 1830'W FROM 3/4 COR, SEC 7 T3N R 30E W.M.
- HALE NO ② 2016'N + 1330'E FROM SW COR, SEC 6 T3N R 30E W.M.
- HALE NO ③ 1425'S + 40'E FROM W 1/4 COR, SEC 7 T3N R 30E W.M.
- HALE NO ④ 190'N + 260'W FROM E 1/4 COR, SEC 2 T3N R 29E W.M.
- HALE NO ⑤ 80'N + 50'W FROM SE COR, SEC 11 T3N R 29E W.M.
- HALE NO ⑥ 132'N + 219'W FROM E 1/4 COR, SEC 11 T3N R 29E W.M.
- HALE NO ⑦ 1010'S + 44'E FROM NW COR, SEC 12 T3N R 29E W.M.
- HALE NO ⑧ 1350'S + 50'W FROM NE COR NW 1/4 NW 1/4 SEC 14 T3N R 29E W.M.
- HALE SEIBEL WELL 300' NORTH AND 312' WEST FROM SE CORNER SEC 9 T3N R 29E W.M.
- COPPINGER NO ① 20'N + 157'W FROM E 1/4 COR, SEC 24 T3N R 29E W.M.
- COPPINGER NO ② 80'N + 30'W FROM E 1/4 COR, SEC 24 T3N R 29E W.M.
- COPPINGER NO ③ 398'N + 132'W FROM SE COR, SEC 23 T3N R 29E W.M.
- BROGGIATI NO ① 30'S + 64'W FROM CENTER, SEC 35 T3N R 30E W.M.
- BROGGIATI NO ② 100'N + 80'E FROM SW COR, SEC 20 T3N R 30E W.M.

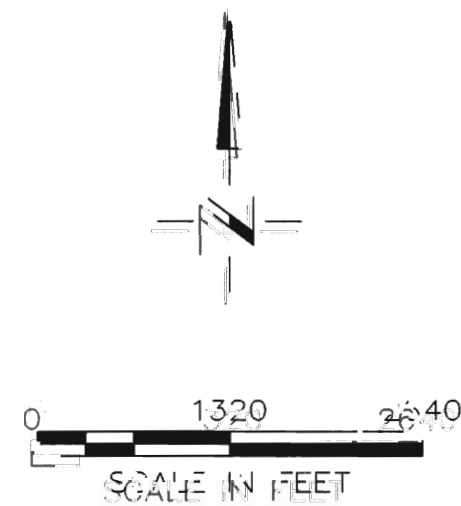
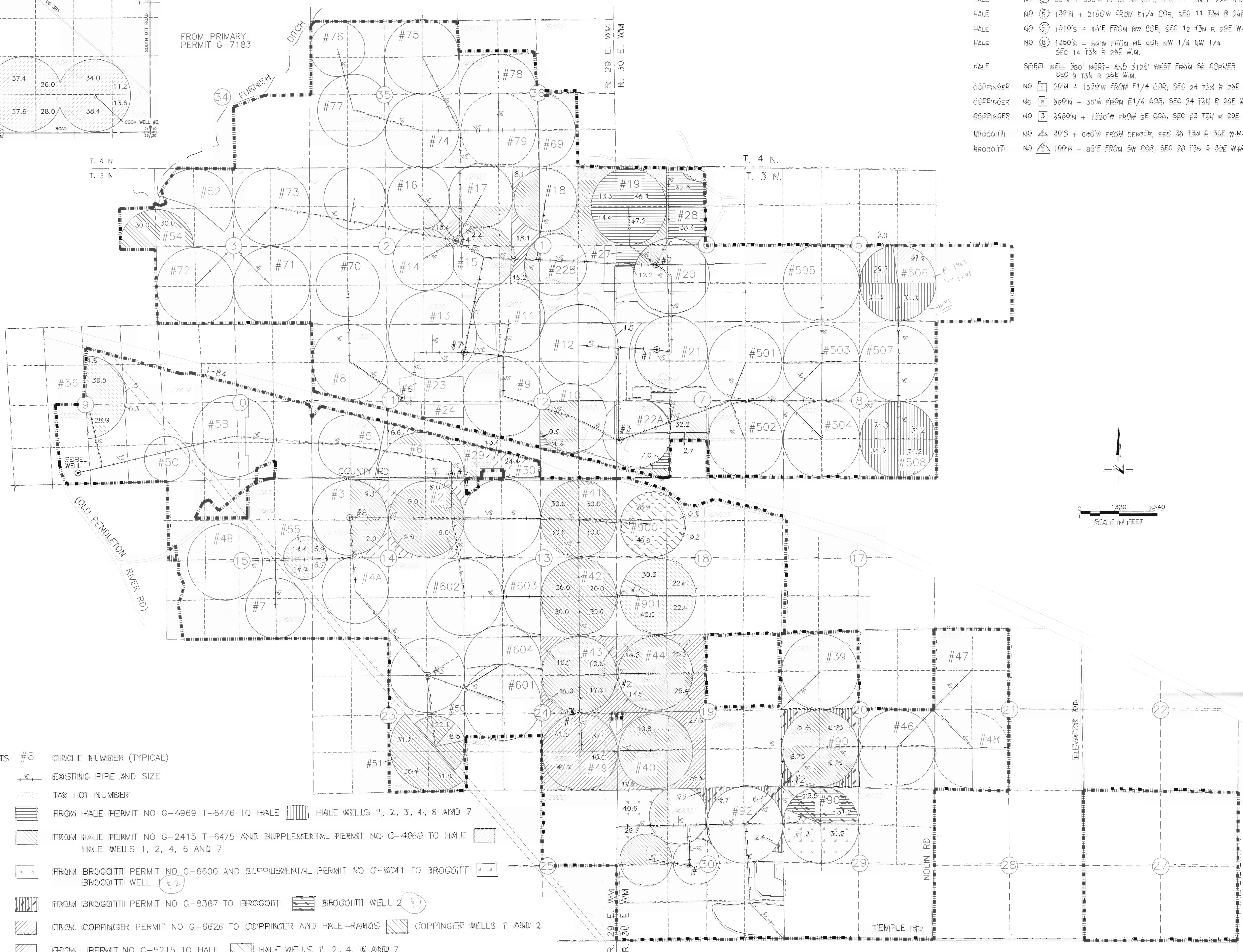
T4N, R28E, WM



FROM PRIMARY PERMIT G-7183

T. 4 N
T. 3 N

T. 4 N
T. 3 N



- ATTACHMENTS
- #8 CIRCLE NUMBER (TYPICAL)
 - EXISTING PIPE AND SIZE
 - TAX LOT NUMBER
 - A FROM HALE PERMIT NO G-4969 T-6476 TO HALE HALE WELLS 1, 2, 3, 4, 6 AND 7
 - B FROM HALE PERMIT NO G-2415 T-6475 AND SUPPLEMENTAL PERMIT NO G-4969 TO HALE HALE WELLS 1, 2, 4, 6 AND 7
 - C FROM BROGGIATI PERMIT NO G-6600 AND SUPPLEMENTAL PERMIT NO G-8041 TO BROGGIATI BROGGIATI WELL 1
 - D FROM BROGGIATI PERMIT NO G-8367 TO BROGGIATI BROGGIATI WELL 2
 - E FROM COPPINGER PERMIT NO G-6026 TO COPPINGER AND HALE-HAWKS COPPINGER WELLS 1 AND 2
 - F FROM PERMIT NO G-5215 TO HALE HALE WELLS 1, 2, 4, 6 AND 7
 - G FROM HALE PERMIT NO G-5215 TO HALE HALE WELLS 5 AND 8
 - H FROM COOK PERMIT NO G-7183 TO HALE SEIBEL WELL - THIS TRANSFER IS ON A SEPARATE APPLICATION
 - AREAS OF EXISTING WATER RIGHTS NOT INCLUDED IN THIS TRANSFER