

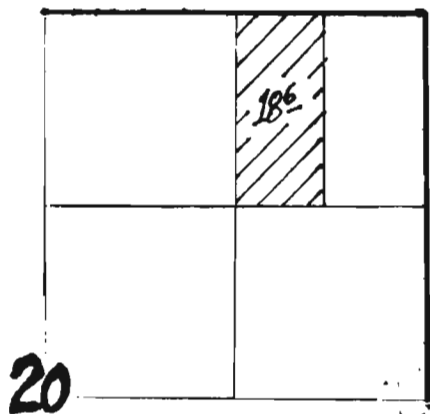
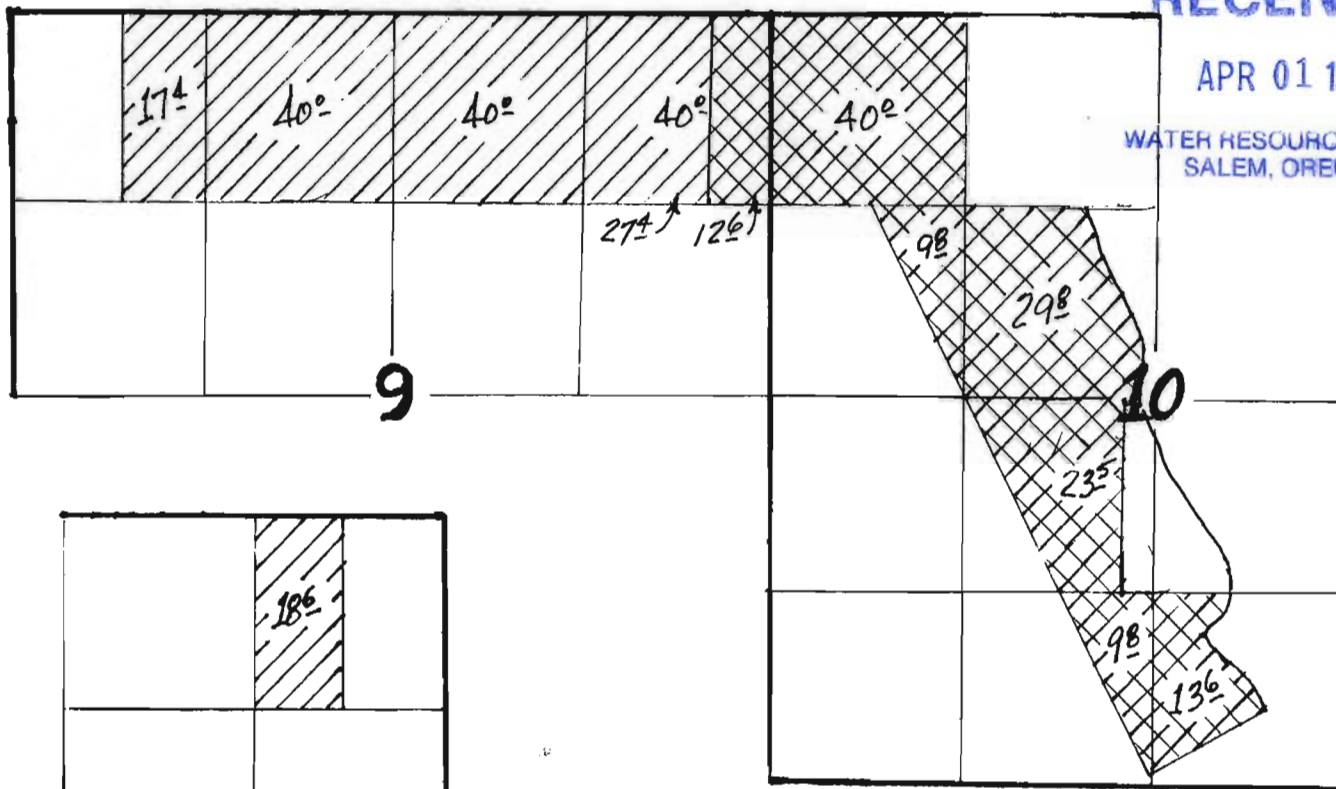
TEMPORARY TRANSFER # 7969 - LARSON SKYLINE FARM



"TO" LANDS

RECEIVED

APR 01 1998

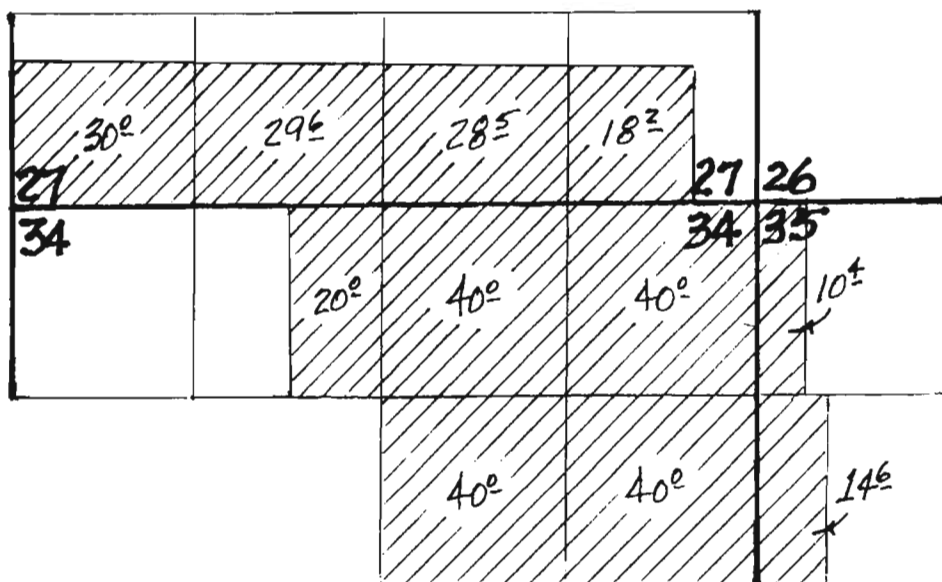
WATER RESOURCES DEP
SALEM, OREGON



-  Cert. 74020
-  Cert. 74023



SCALE 1" = 1320'



T. 17S., R. 46E., W.M.