

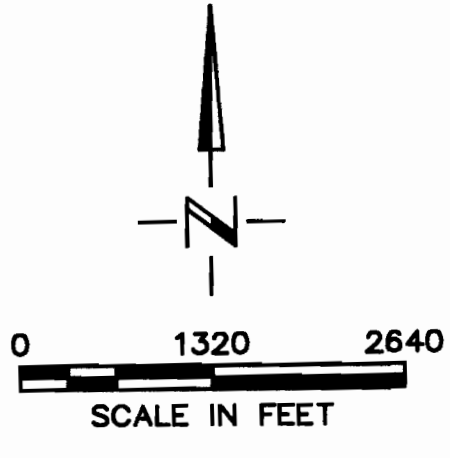
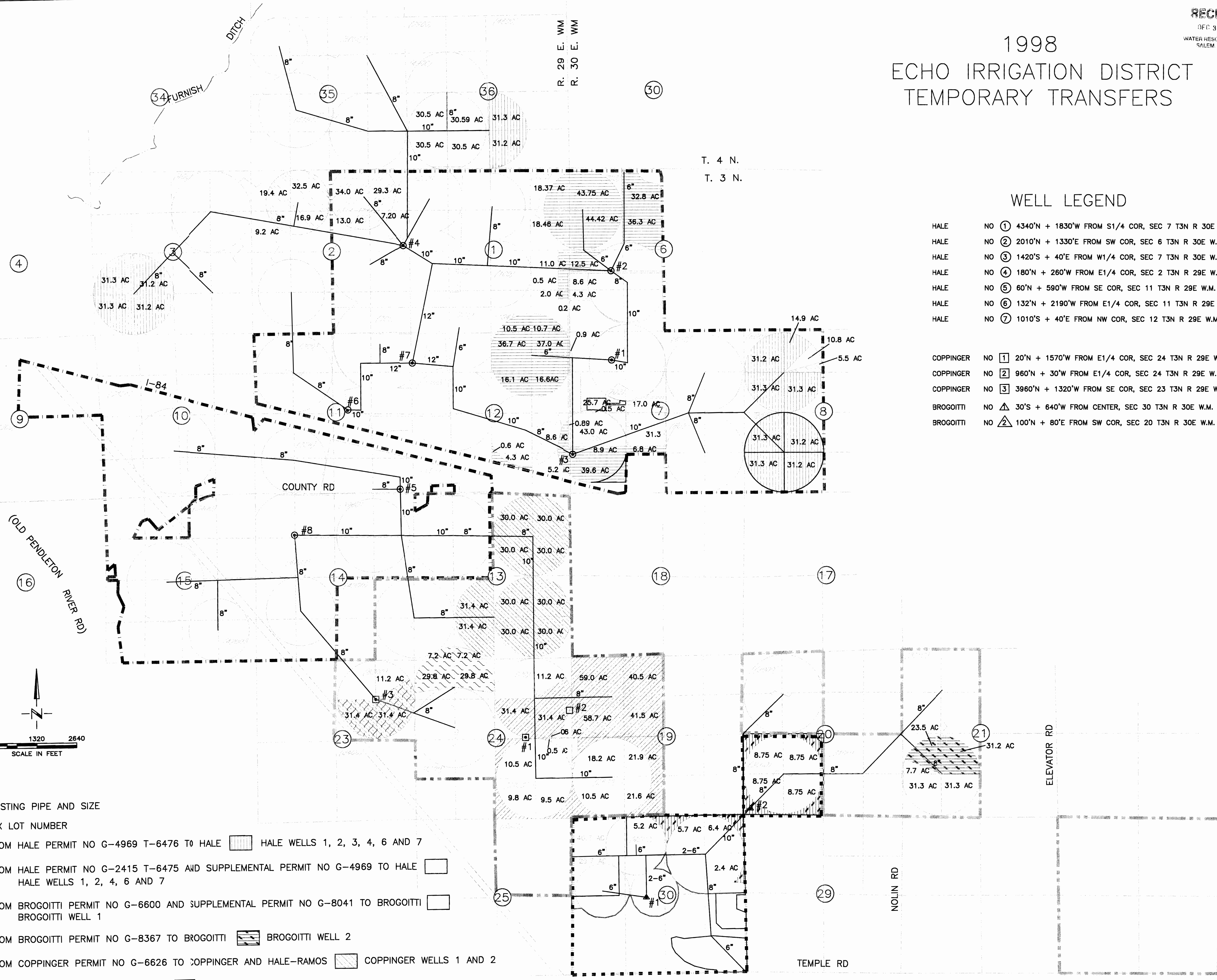
# 1998 ECHO IRRIGATION DISTRICT TEMPORARY TRANSFERS

WM  
E. E.  
R. R.

T. 4 N.  
T. 3 N.

## WELL LEGEND

- HALE NO ① 4340'N + 1830'W FROM S1/4 COR, SEC 7 T3N R 30E W.M.
- HALE NO ② 2010'N + 1330'E FROM SW COR, SEC 6 T3N R 30E W.M.
- HALE NO ③ 1420'S + 40'E FROM W1/4 COR, SEC 7 T3N R 30E W.M.
- HALE NO ④ 180'N + 260'W FROM E1/4 COR, SEC 2 T3N R 29E W.M.
- HALE NO ⑤ 60'N + 590'W FROM SE COR, SEC 11 T3N R 29E W.M.
- HALE NO ⑥ 132'N + 2190'W FROM E1/4 COR, SEC 11 T3N R 29E W.M.
- HALE NO ⑦ 1010'S + 40'E FROM NW COR, SEC 12 T3N R 29E W.M.
  
- COPPINGER NO ① 20'N + 1570'W FROM E1/4 COR, SEC 24 T3N R 29E W.M.
- COPPINGER NO ② 960'N + 30'W FROM E1/4 COR, SEC 24 T3N R 29E W.M.
- COPPINGER NO ③ 3960'N + 1320'W FROM SE COR, SEC 23 T3N R 29E W.M.
  
- BROGOITTI NO △ 30'S + 640'W FROM CENTER, SEC 30 T3N R 30E W.M.
- BROGOITTI NO △ 100'N + 80'E FROM SW COR, SEC 20 T3N R 30E W.M.



- ATTACHMENTS
- A EXISTING PIPE AND SIZE
  - B TAX LOT NUMBER
  - C FROM HALE PERMIT NO G-4969 T-6476 TO HALE HALE WELLS 1, 2, 3, 4, 6 AND 7
  - D FROM HALE PERMIT NO G-2415 T-6475 AND SUPPLEMENTAL PERMIT NO G-4969 TO HALE HALE WELLS 1, 2, 4, 6 AND 7
  - E FROM BROGOITTI PERMIT NO G-6600 AND SUPPLEMENTAL PERMIT NO G-8041 TO BROGOITTI BROGOITTI WELL 1
  - F FROM BROGOITTI PERMIT NO G-8367 TO BROGOITTI BROGOITTI WELL 2
  - G FROM COPPINGER PERMIT NO G-6626 TO COPPINGER AND HALE-RAMOS COPPINGER WELLS 1 AND 2
  - H FROM PERMIT NO G-5215 TO HALE HALE WELLS 1, 2, 4, 6 AND 7
  - I FROM COPPINGER PERMIT NO G-7041 TO HALE-RAMOS COPPINGER WELL 3

T-7903