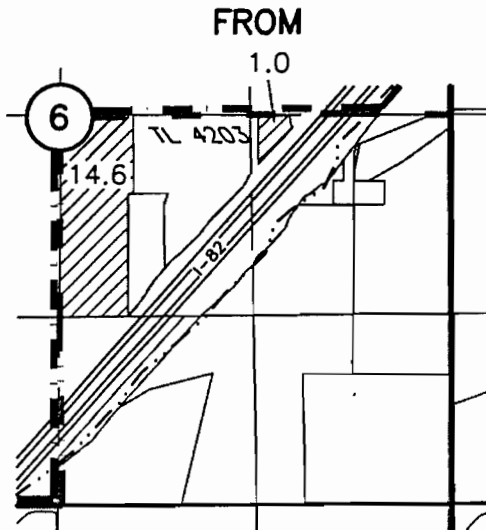


2002 WESTLAND IRRIGATION DISTRICT
540:580 TRANSFER MAP
LAMB-WESTON TO LAMB-WESTON
APRIL 12, 1961 PERMIT 27583 CERT 76799
T4N., R 28E., W.M.

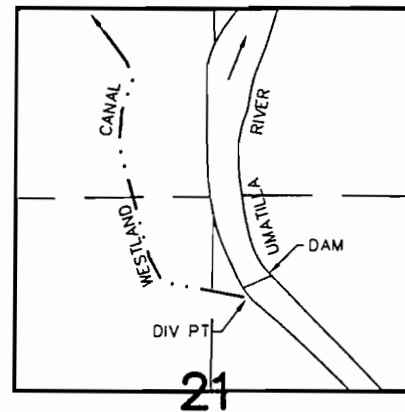
RECEIVED

DEC 19 2002

WATER RESOURCES DEPT.
SALEM, OREGON

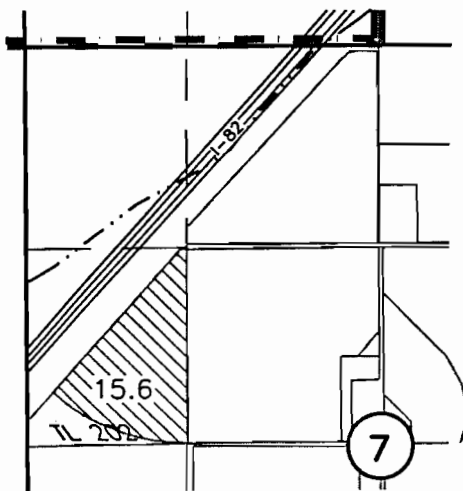


T3N., R 29E., W.M.



DIV PT LCT N.76°45'56"E. 2913.19' FROM W.1/4 COR. SEC 21
WESTLAND IRRIGATION DISTRICT

TO



NOTE: THE PURPOSE OF THIS MAP IS TO IDENTIFY THE APPROXIMATE LOCATION
OF THE WATER RIGHT. IT IS NOT INTENDED TO PROVIDE INFORMATION
RELATIVE TO THE LOCATION OF PROPERTY OWNERSHIP BOUNDARY LINES.


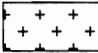

T-9311

SCM Consultants, Inc.

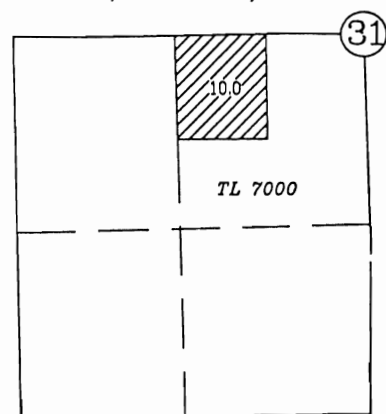
Architects & Engineers
Kennewick, WA 99336

04/20/02
3522.149
3522149LAM2.DWG

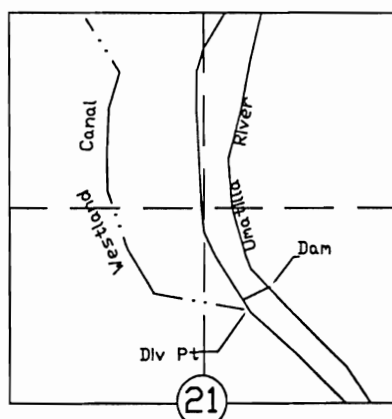
2002 WESTLAND IRRIGATION DISTRICT TRANSFER MAP PARKS & WALKER TO PARKS July 1907, Cert. 76717 Primary; & Cert. 79439 Supplemental.

-  FROM 1907
-  TO 1907
-  Area of 1907 not involved in transfer

T4N., R28E., W.M.

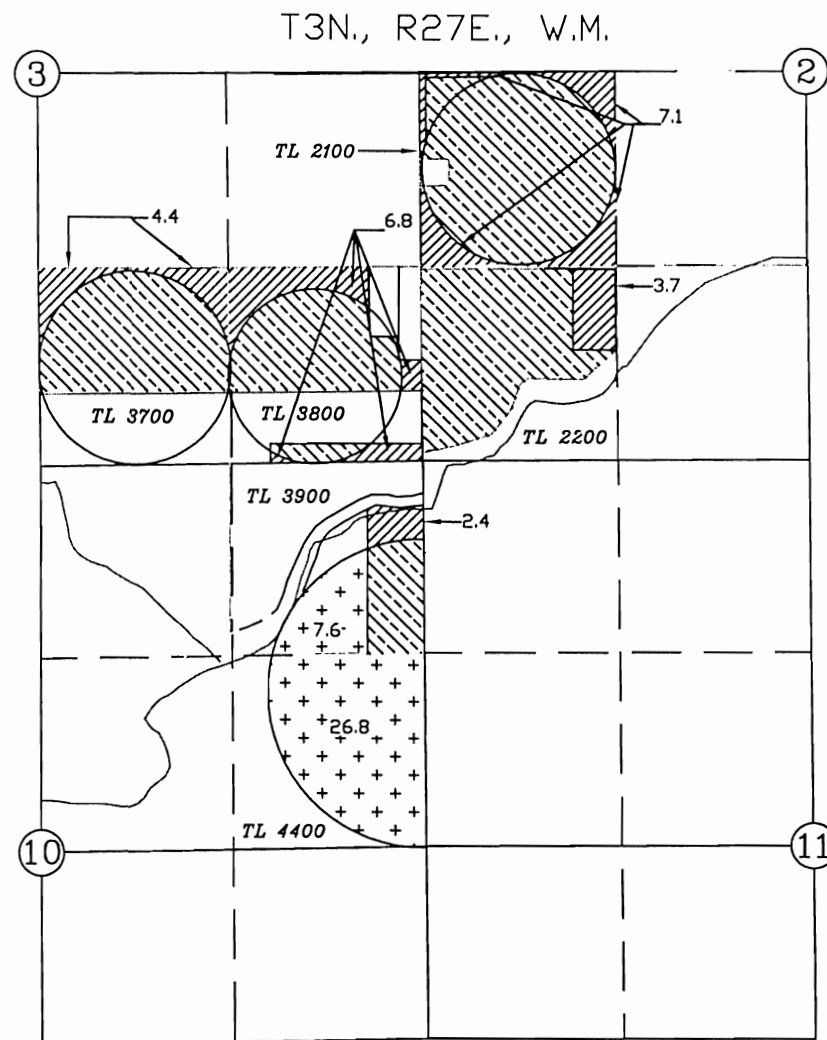


T3N., R 29E., W.M.



DIV PT LCT N. 76°45'56"E. 2913.19' FROM W.1/4 COR. SEC 21
WESTLAND IRRIGATION DISTRICT

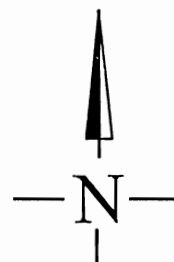
NOTE: THE PURPOSE OF THIS MAP IS TO IDENTIFY THE APPROXIMATE LOCATION
OF THE WATER RIGHT. IT IS NOT INTENDED TO PROVIDE INFORMATION
RELATIVE TO THE LOCATION OF PROPERTY OWNERSHIP BOUNDARY LINES.



RECEIVED

DEC 19 2002

WATER RESOURCES DEPT
SALEM, OREGON


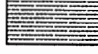
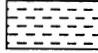


0 1320 2640

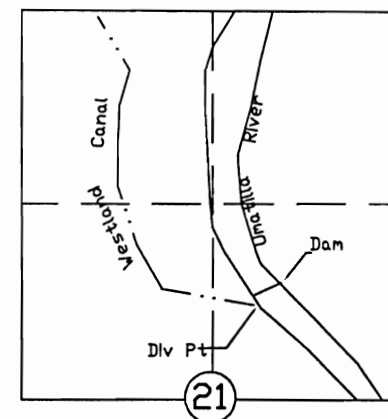
SCALE IN FEET

T-9311

2002 WESTLAND IRRIGATION DISTRICT TRANSFER MAP PARKS & WALKER TO PARKS April 12, 1961, Certificate 76799

-  FROM 1961
-  TO 1961
-  Area of 1961 not involved in transfer

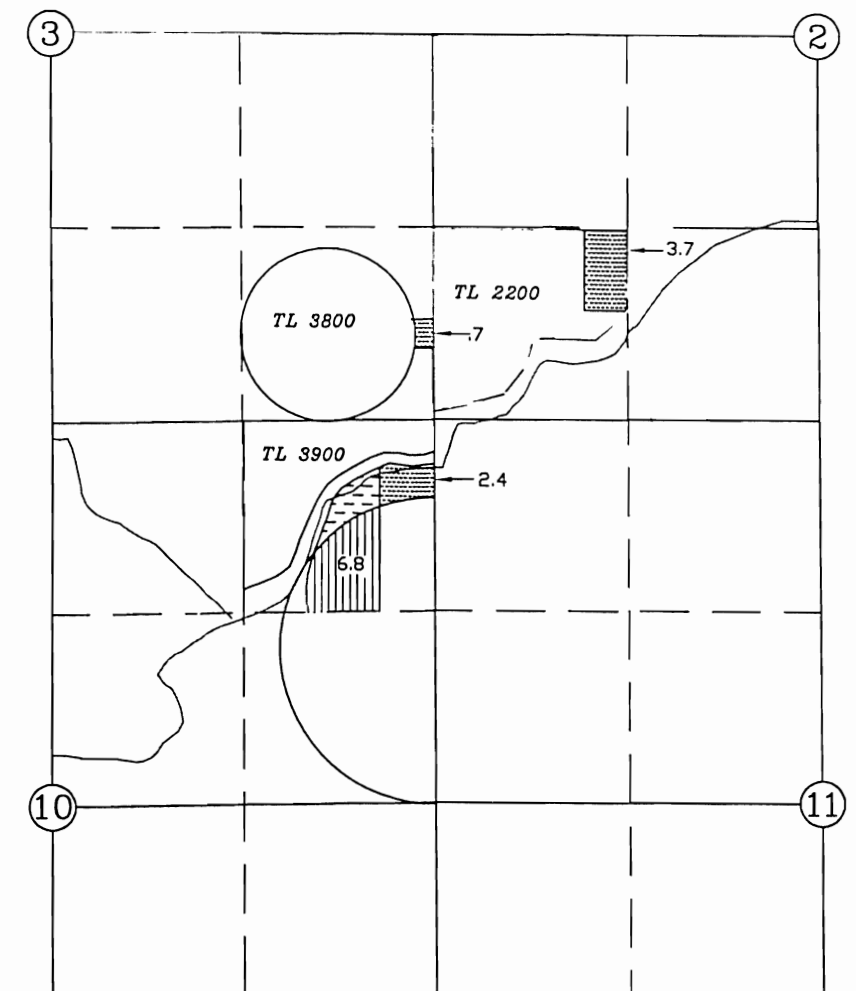
T3N., R 29E., W.M.



DIV PT LCT N. 76°45'56"E. 2913.19' FROM W.1/4 COR. SEC 21
WESTLAND IRRIGATION DISTRICT

NOTE: THE PURPOSE OF THIS MAP IS TO IDENTIFY THE APPROXIMATE LOCATION
OF THE WATER RIGHT. IT IS NOT INTENDED TO PROVIDE INFORMATION
RELATIVE TO THE LOCATION OF PROPERTY OWNERSHIP BOUNDARY LINES.

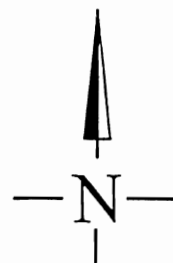
T3N., R27E., W.M.



RECEIVED

DEC 19 2002

WATER RESOURCES DEPT
SALEM, OREGON



0 1320 2640

SCALE IN FEET