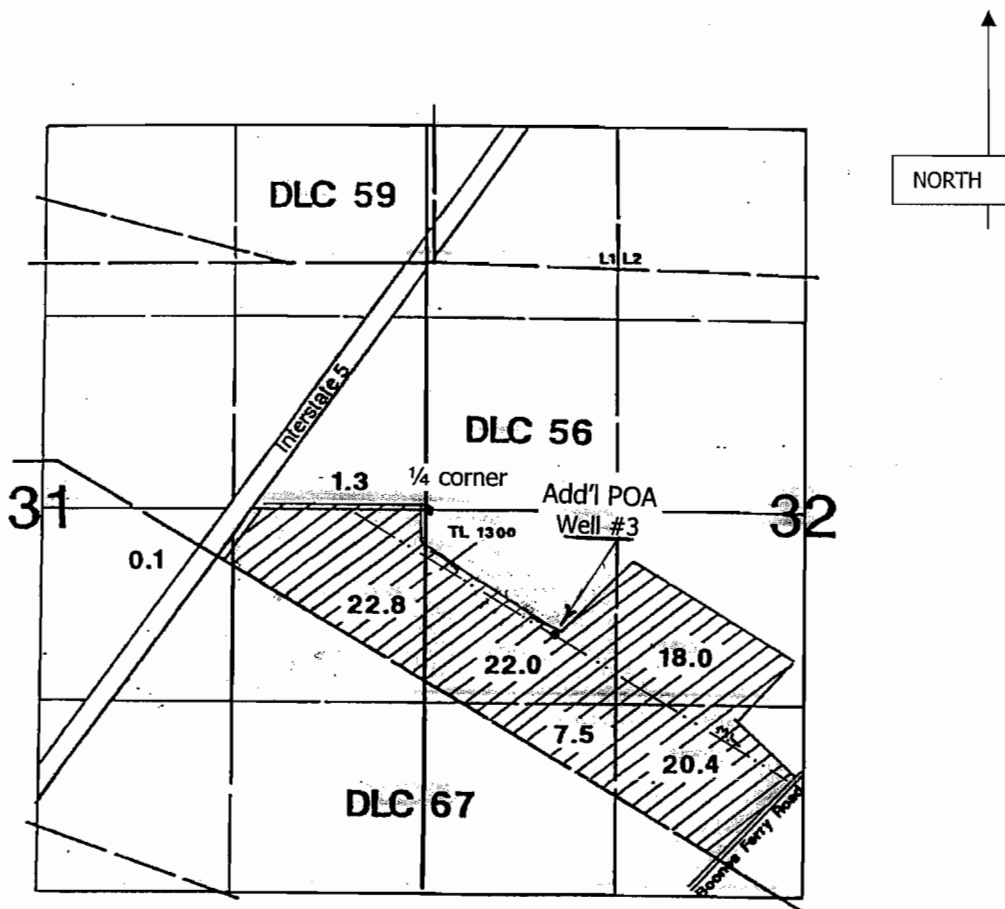


FINAL PROOF MAP IN THE NAME OF

BIZON NURSERY

T-9367

T 4 S, R 1 W, W.M. Section 31 & 32



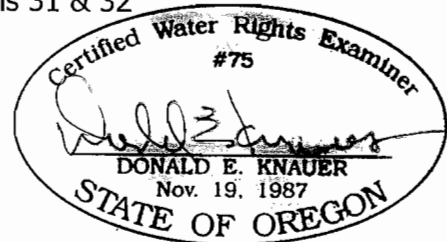
RECEIVED

FEB 15 2001

WATER RIGHTS DIVISION
SALEM, OREGON

Well #3: 850' S & 870' E from the ¼ corner sections 31 & 32

Scale 1" = 1320'



This map is for water right purposes only.

RENEWAL DATE: 6/30/2009