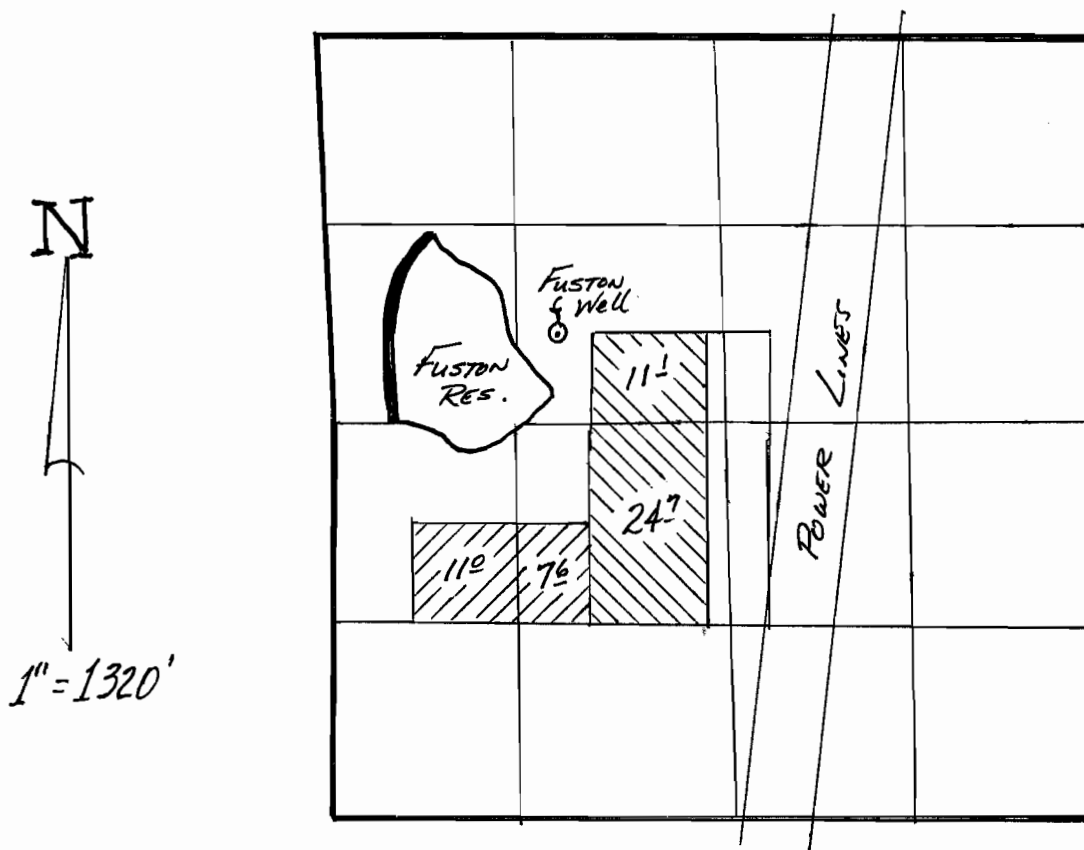
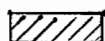



COLUMBIA EMPIRE FARMS - R-2 RANCH

APPLICATION TO AMEND PERMIT G-13875

T.9S., R.15E., W.M. SECTION 10



 PRIMARY
 SUPPLEMENTAL

RECEIVED
MAY 20 2003
WATER RESOURCES DEPT
SALEM, OREGON

T.9442

FEB/2003 *SM*