

- ON MAP -

☐ - LAND to be transferred on.
(1873 in Section 1)
(1906 in Section 7)



1 inch = 1320 Feet

RECEIVED

MAY 02 2003

WATER RESOURCES DEPT
SALEM, OREGON

HWY 126

OCHOCO CREEK

PROPOSED
P.O.D. #3

P.O.D. #2

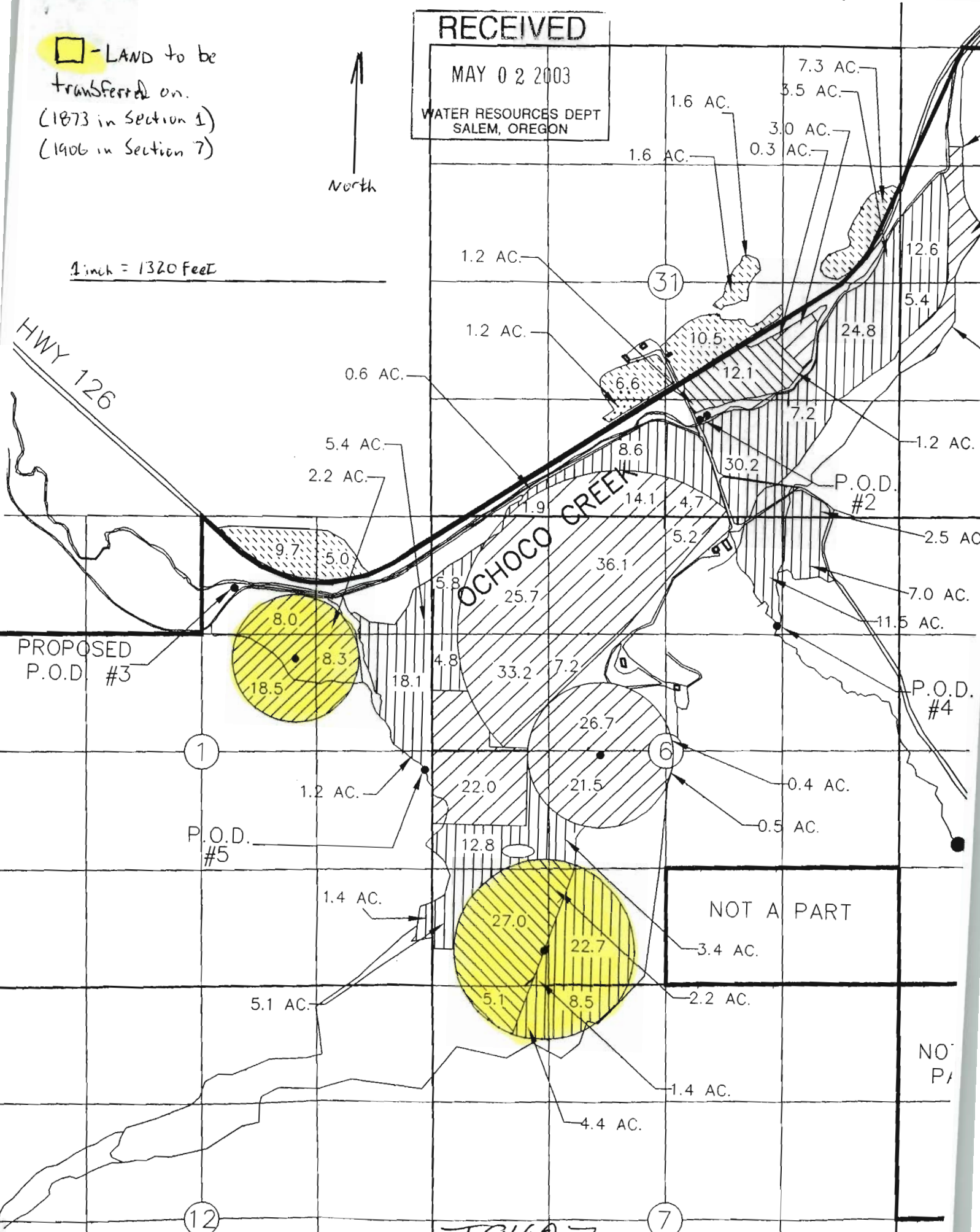
P.O.D. #5

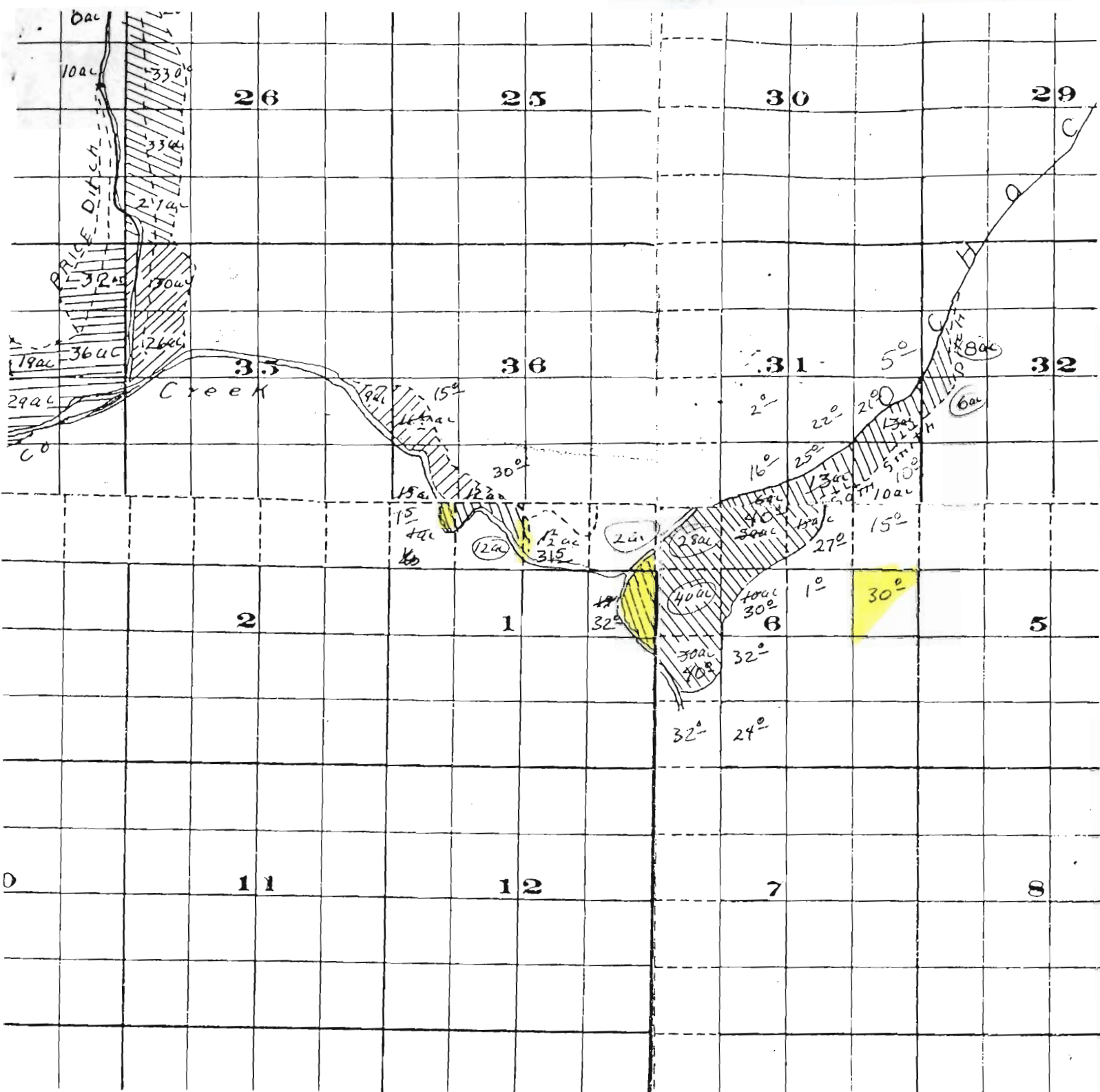
P.O.D. #4

NOT A PART

NO P/

T9497





☐ - Lands to be transferred off.
 (1873 in Section 1) (1906 in Section 6)

1 inch = 2640 feet

RECEIVED
 MAY 02 2003
 WATER RESOURCES DEPT
 SALEM, OREGON



-OFF MAP-

T9427