

RECEIVED

JUN - 3 2003

13S-9E-16 DD WATER RESOURCES DEPT.
SALEM, OREGON

TAX LOT
201

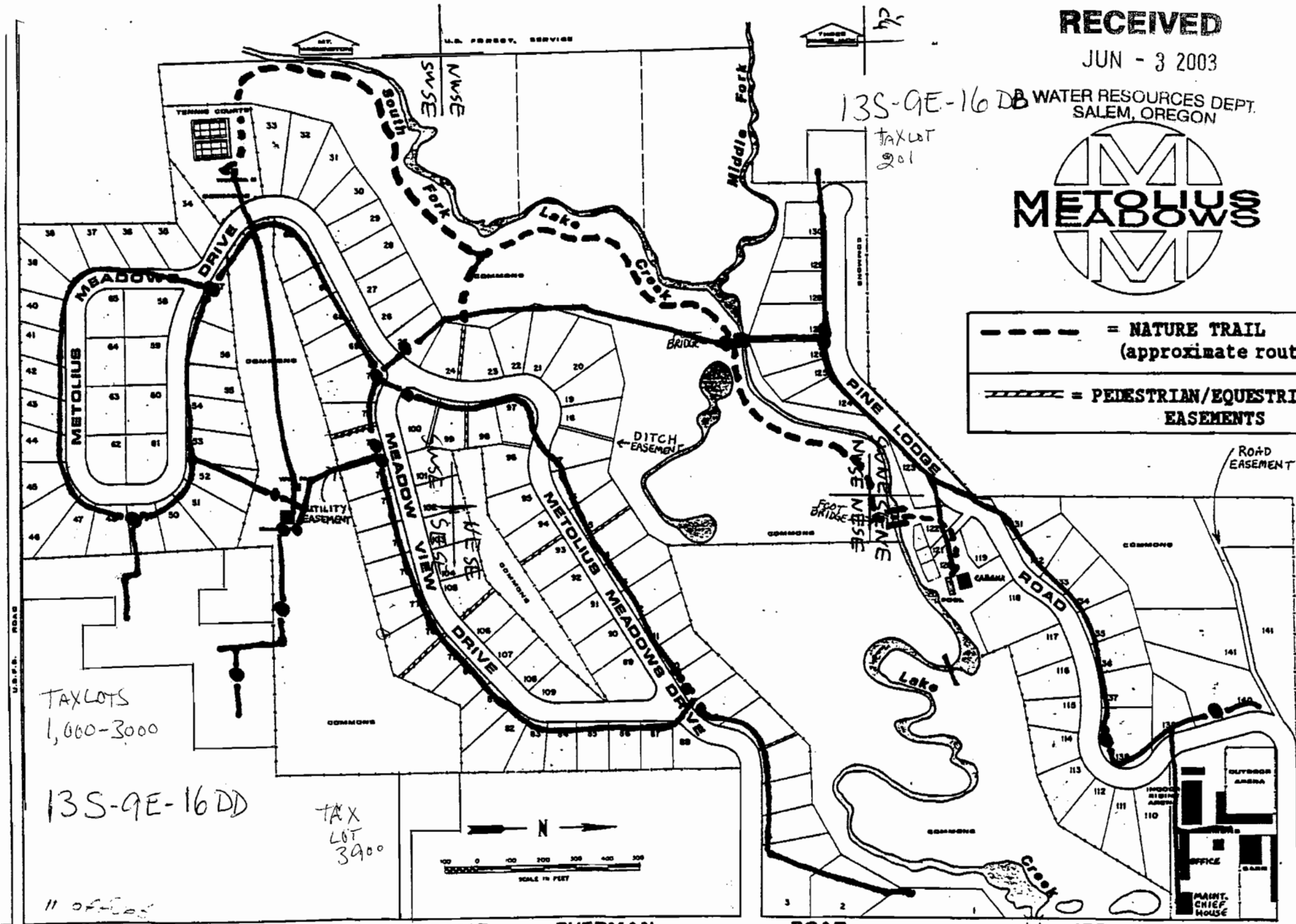


- - - = NATURE TRAIL (approximate route)
- ==== = PEDESTRIAN/EQUESTRIAN EASEMENTS

NORTH DITCH

BLAKE BUTTE

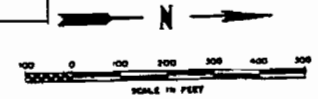
U.S. FOREST SERVICE



TAX LOTS
1,000-3000

13S-9E-16 DD

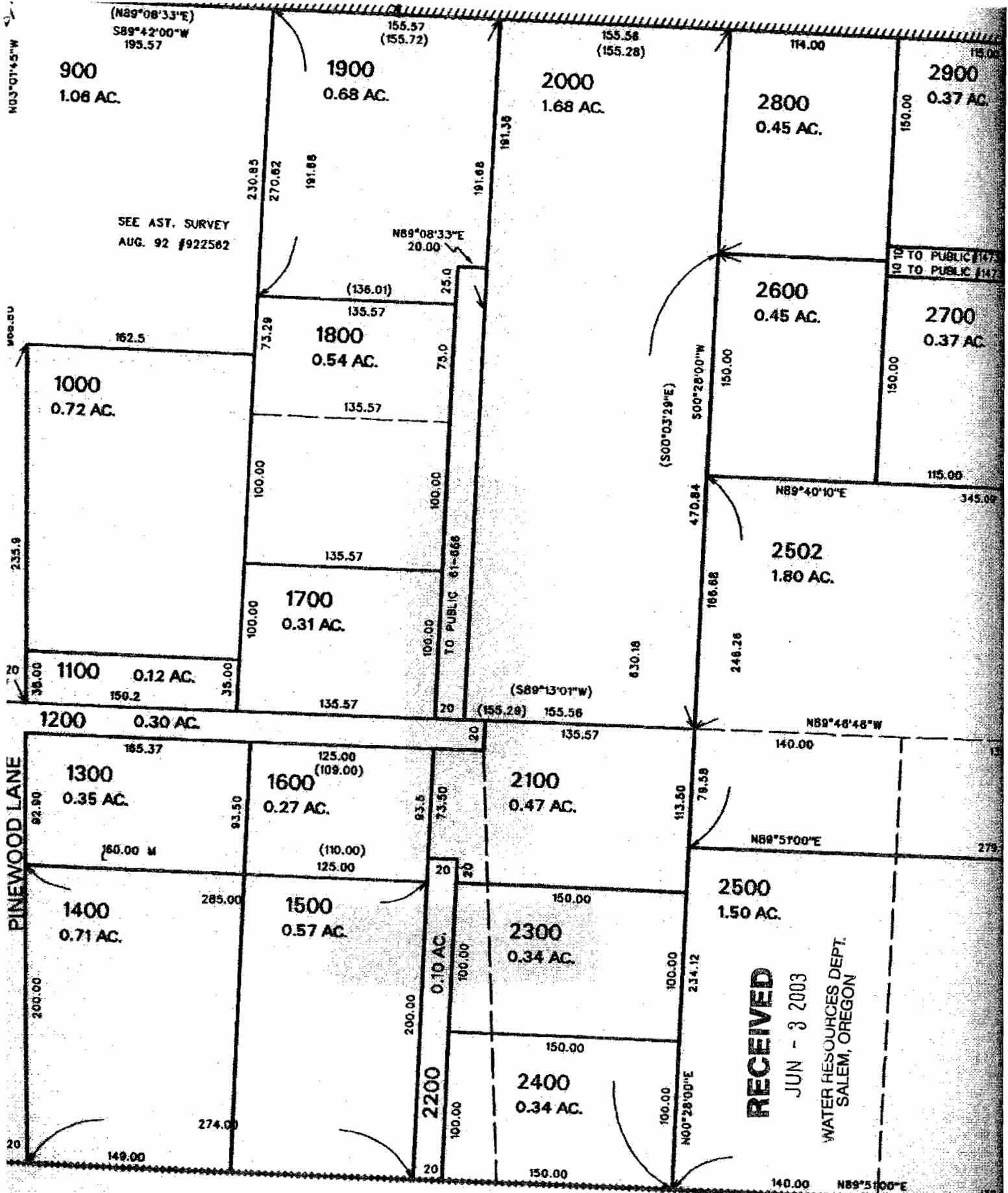
TAX
LOT
3900



85hb-1-9458

11 OFFICES
972-222-1111
10/20/03

- H₂O
VALVE



SEE AST. SURVEY
AUG. 92 #922562

TO PUBLIC #147
TO PUBLIC #147

TO PUBLIC 81-666

RECEIVED
JUN - 3 2003
WATER RESOURCES DEPT.
SALEM, OREGON

SEE MAP 13 9

T. 9458

ON 16 T.13S. R.9E. W.M.
ON COUNTY

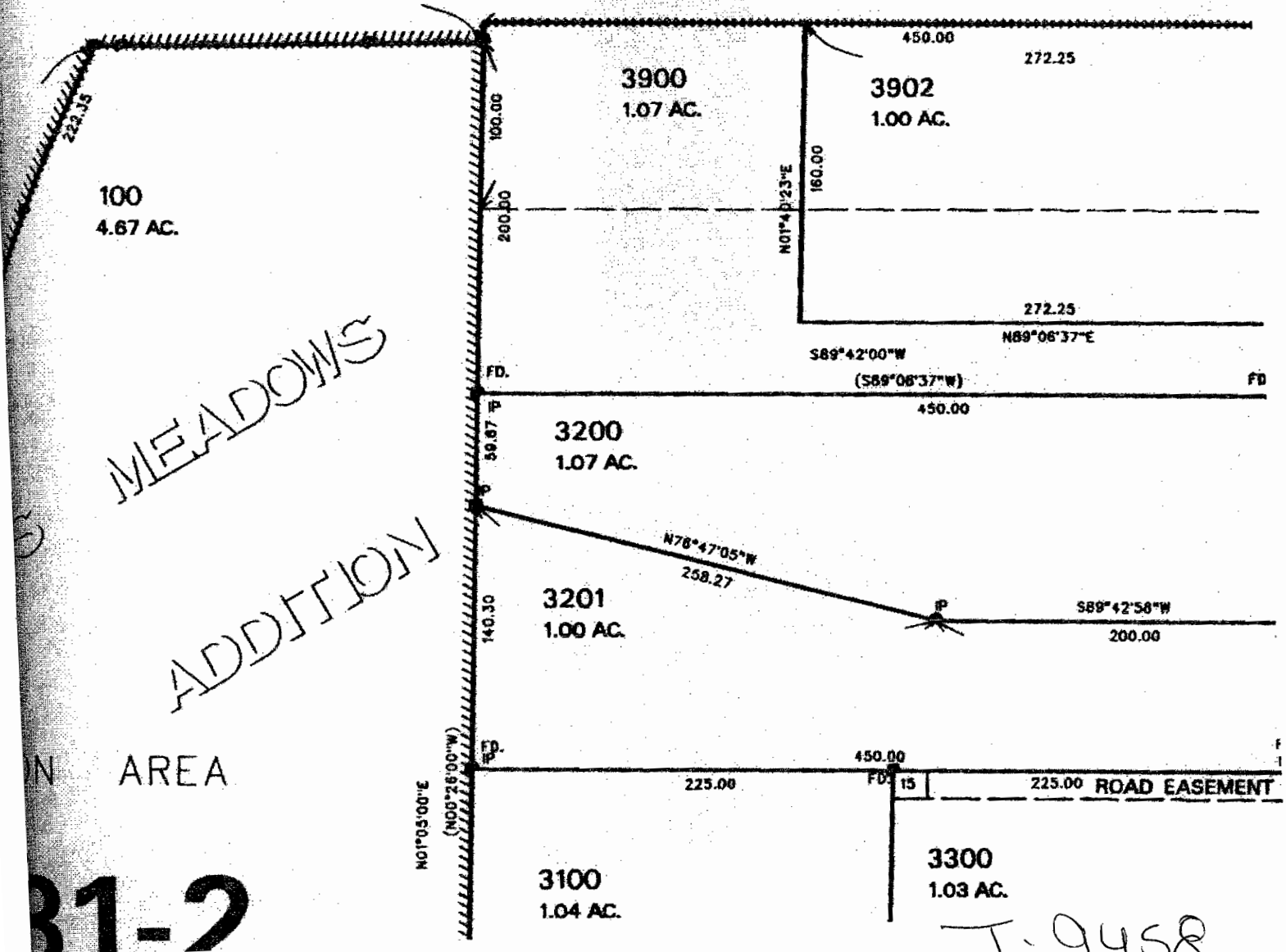
1"=100'

RECEIVED

JUN - 3 2003

WATER RESOURCES DEPT.
SALEM, OREGON

SEE MAP 13 9 16DA



MEADOWS
ADDITION

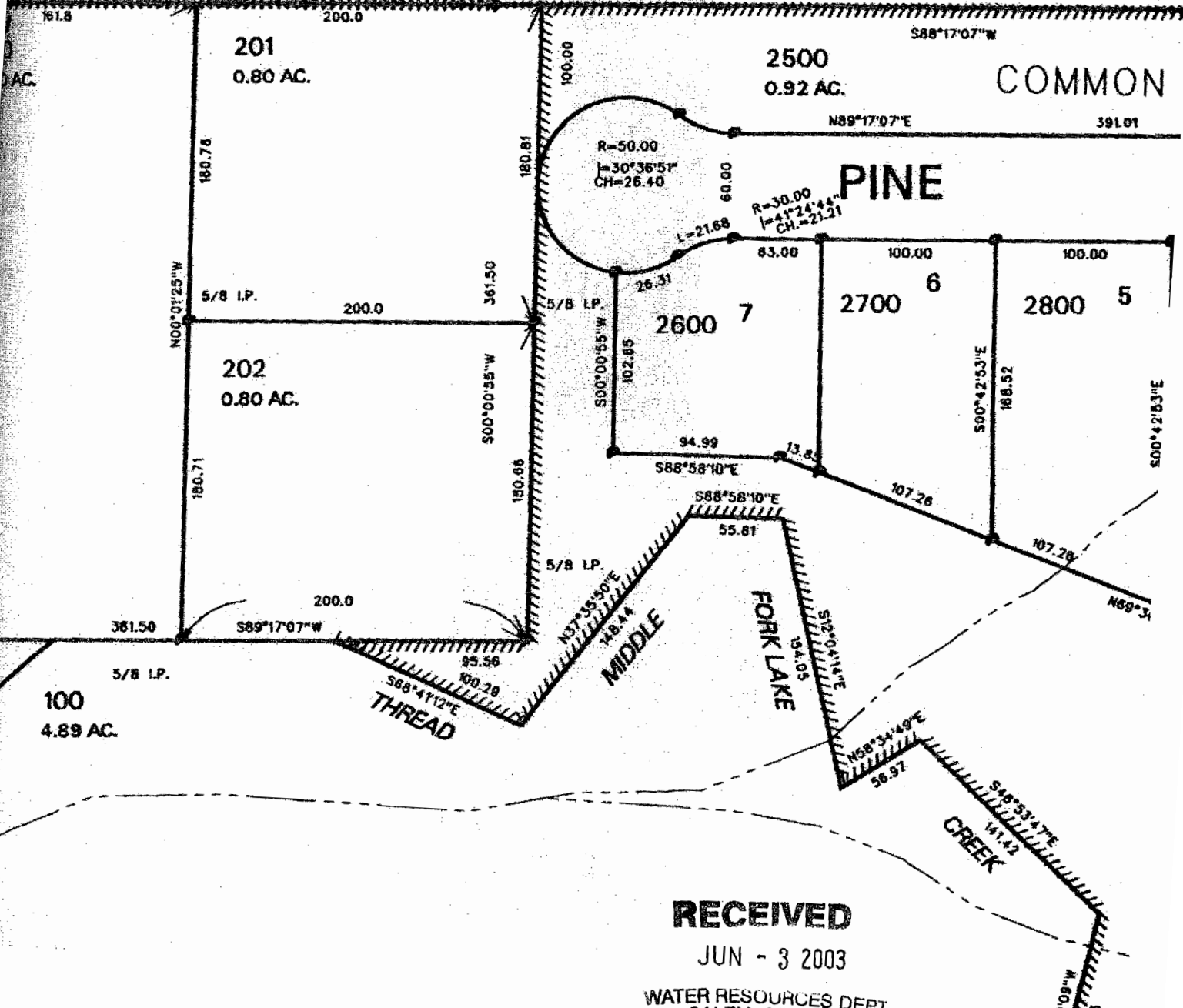
IN AREA

31-2

T-9458

NW1/4 SE1/4
JE

SEE MAP 13 9 16A



RECEIVED

JUN - 3 2003

WATER RESOURCES DEPT.
SALEM, OREGON