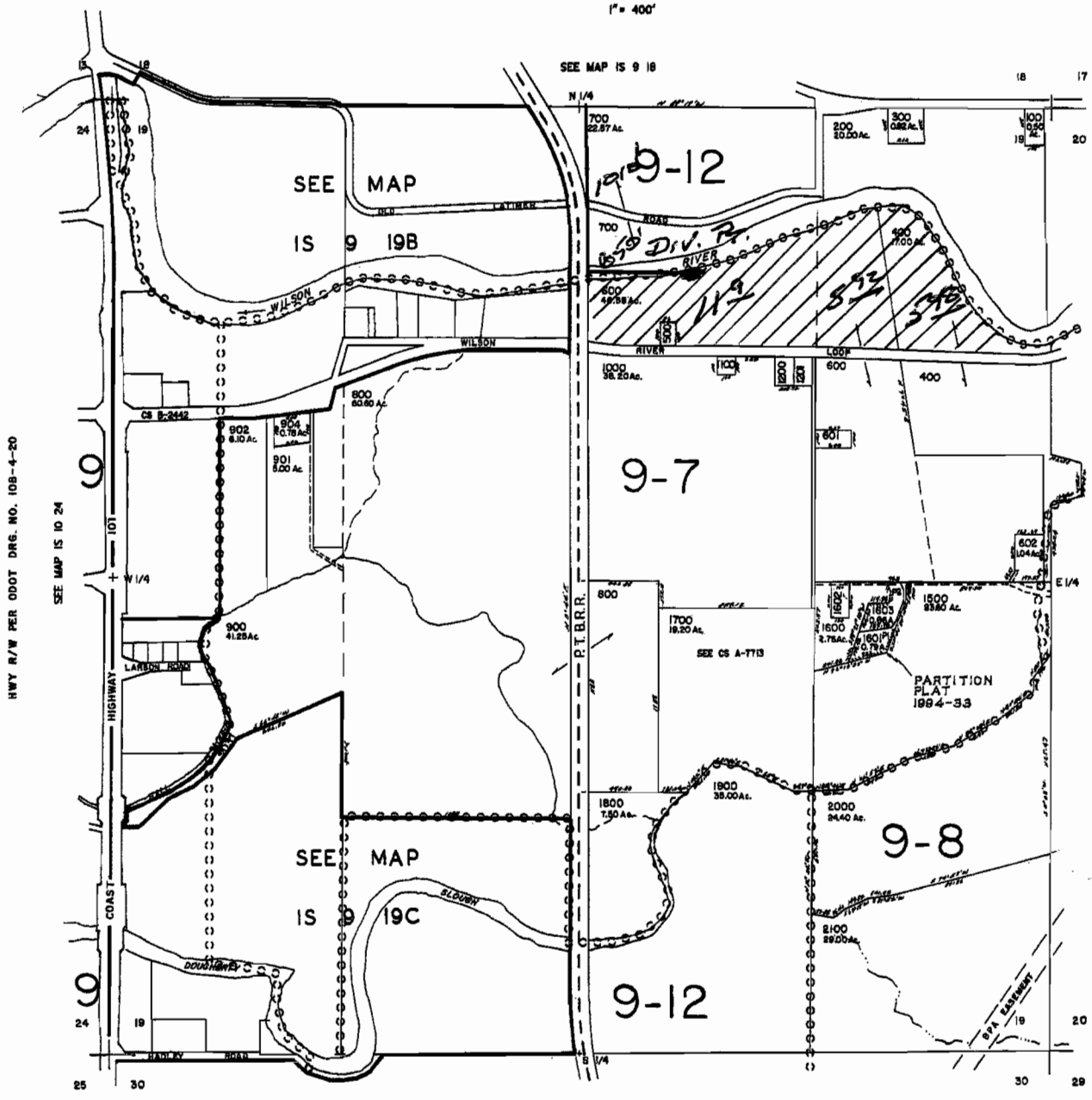


THIS MAP WAS PREPARED FOR  
ASSESSMENT PURPOSE ONLY

SECTION 19 T.1.S. R.9W. W.M.  
TILLAMOOK COUNTY  
1" = 400'

IS 9 19  
& INDEX

CANCELLED NO.  
1300  
1400



*Proposed*

**RECEIVED**

JUN 18 2003

WATER RESOURCES DEPT.  
SALEM, OREGON

*T 9476*

IS 9 19  
& INDEX

REVISED 12-28-98, 9C

HWY R/W PER ODOT DRG. NO. 108-4-20

SEE MAP IS 10 24

SEE MAP IS 9 20

SEE MAP IS 9 30

