

N

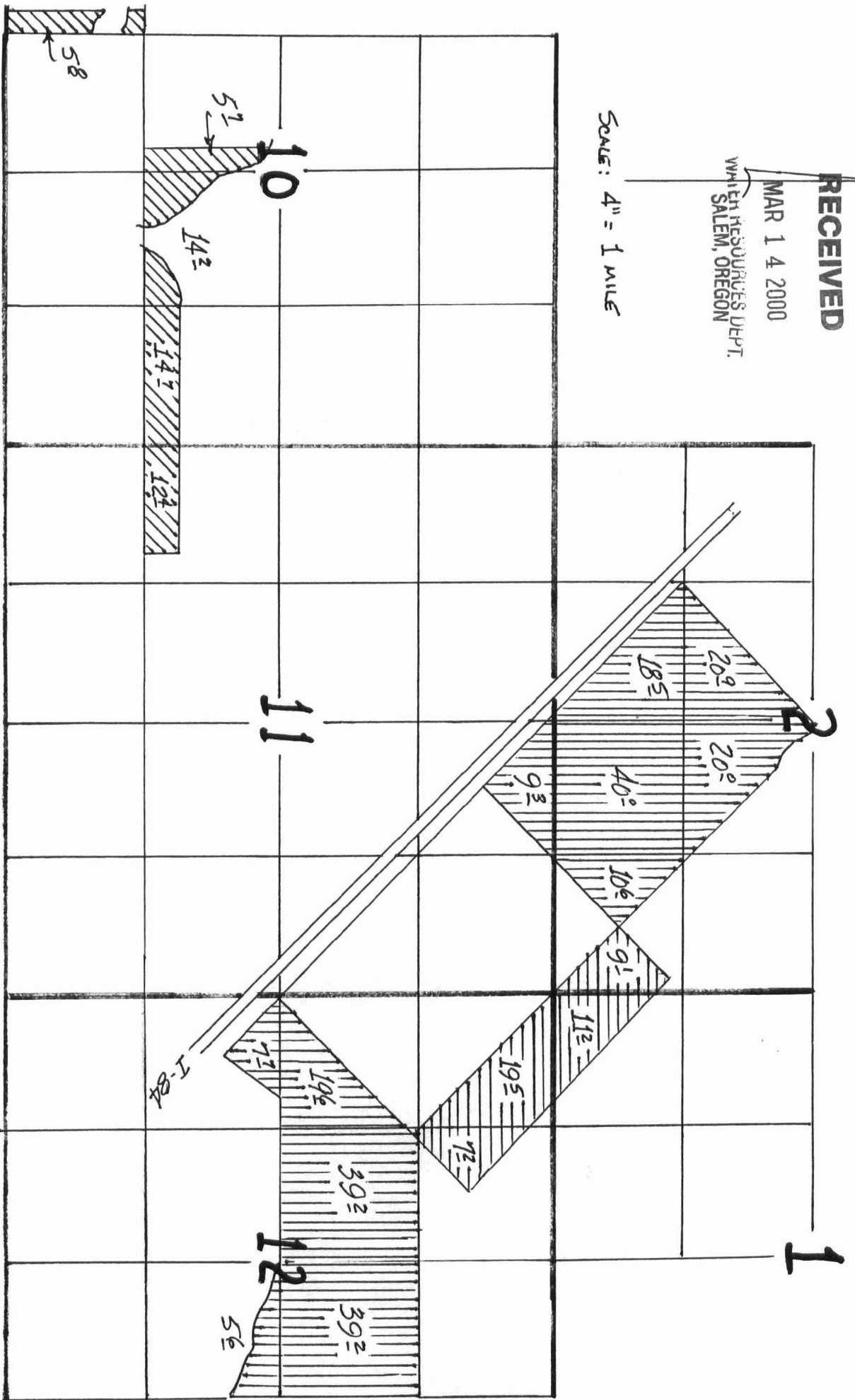
RECEIVED

MAR 14 2000

WILSON RESOURCES DEPT.  
SALEM, OREGON

T. I. T. S., R. 46 E., W. M.

SCALE: 4" = 1 MILE



- "From"
  - ▨ (diagonal lines)
  - ▨ (vertical lines)
  - ▨ (diagonal lines)
- "To"
  - ▨ (horizontal lines)
  - ▨ (vertical lines)
  - ▨ (diagonal lines)

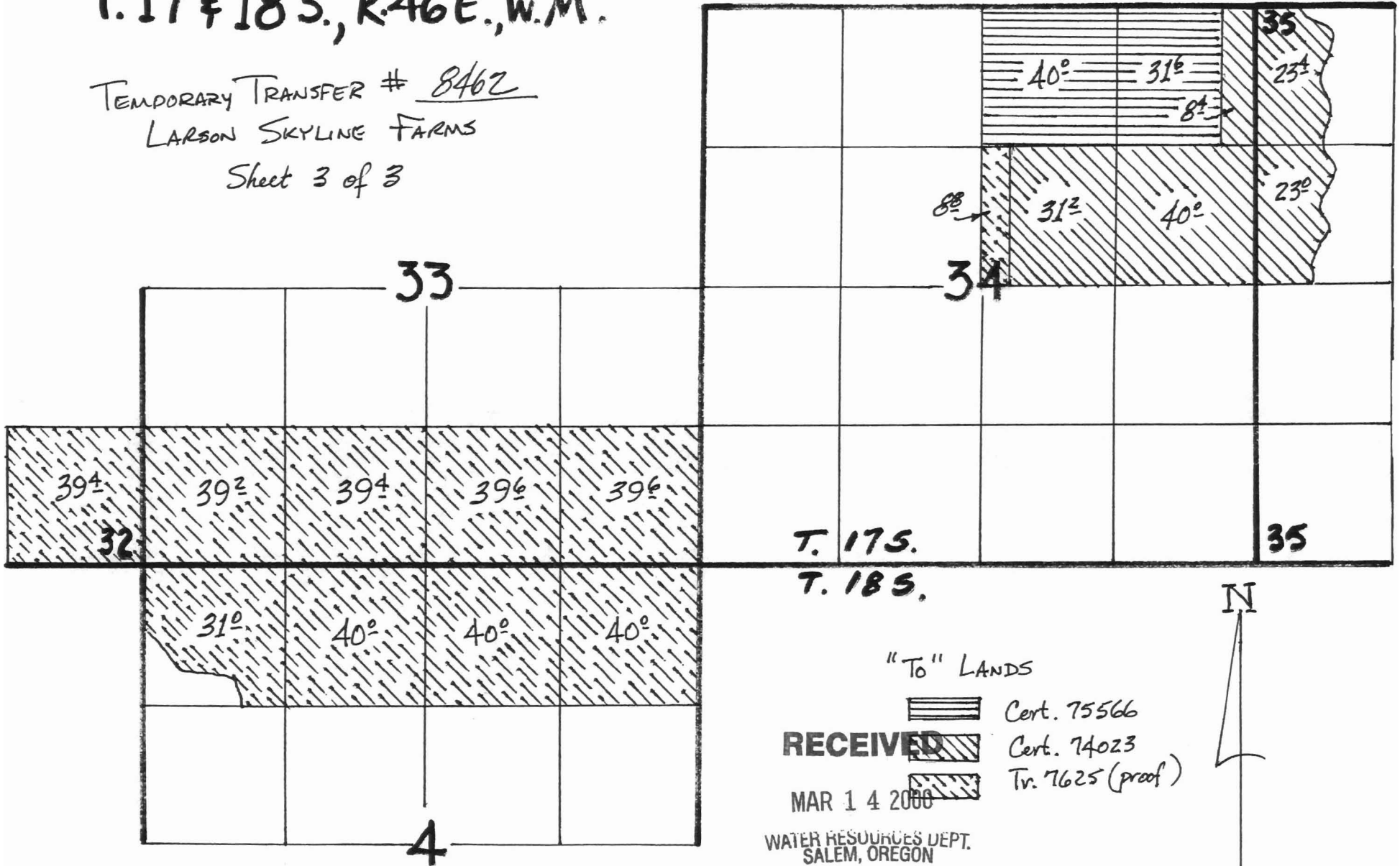
TEMPORARY TRANSFER # 8462  
 LARSON SKYLINE FARMS  
 Sheet 1 of 3

T. 17 & 18 S., R. 46 E., W.M.

TEMPORARY TRANSFER # 8462

LARSON SKYLINE FARMS

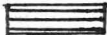

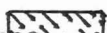
Sheet 3 of 3



T. 17 S.  
T. 18 S.

"To" LANDS

**RECEIVED**  
MAR 14 2000

	Cert. 75566
	Cert. 74023
	Tr. 7625 (proof)

WATER RESOURCES DEPT.  
SALEM, OREGON



SCALE: 4" = 1 MILE