

RECEIVED

MAR 27 2012

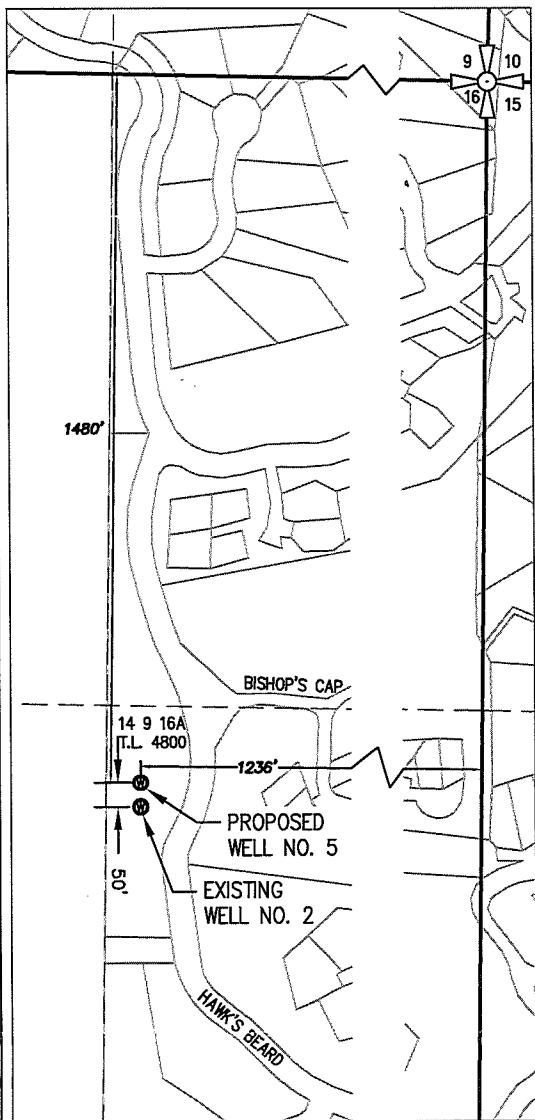
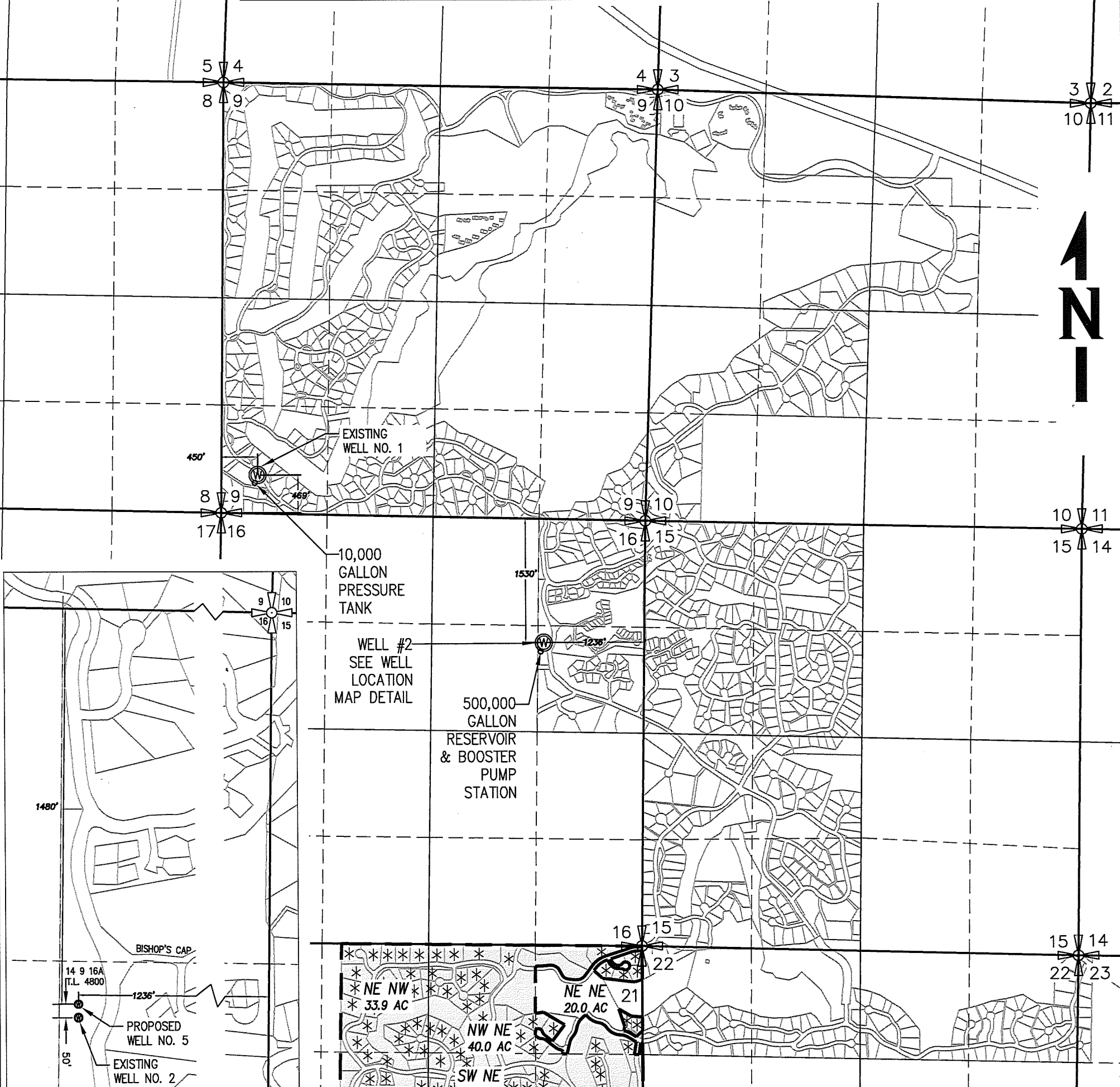
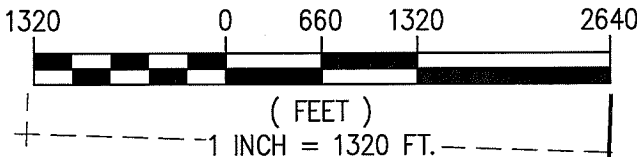
WATER RESOURCES DEPT
SALEM, OREGON

BLACK BUTTE RANCH ASSOCIATION

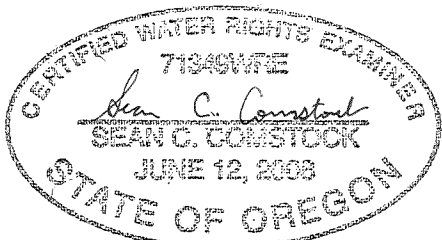
TRANSFER MAP
PERMIT G-8501, CERTIFICATE 86709
JANUARY, 2012

LOCATED WITHIN TOWNSHIP 14 SOUTH, RANGE 9 EAST, W.M.

SCALE



WELL LOCATION MAP DETAIL
1"=400'



EXPIRES: 12/31/13
RENEW:

LEGEND

- WELL LOCATION
- SECTION LINE
- QUARTER SECTION LINE
- SIXTEENTH SECTION LINE
- AREA OF USE FOR GROUP DOMESTIC WATER RIGHT FOR 155 FAMILIES, (C-86709). PRIORITY DATE - FEB. 2, 1979, ISSUED - JAN. 28, 2011.
- SECTION CORNER

NOTE: THIS MAP WAS PREPARED FOR THE PURPOSE OF IDENTIFYING THE LOCATION OF WATER RIGHTS. THIS MAP IS NOT INTENDED TO PROVIDE LEGAL DIMENSIONS OR LOCATIONS OF PROPERTY OWNERSHIP LINES.

TRANSFER MAP
1"=1320'

TRANSFER MAP

BLACK BUTTE RANCH ASSOCIATION

PROJECT NUMBER
035602

DRAWING FILE NAME
35602-LAND-WR-C-86709 TRANSFER MAP

SCALE
AS SHOWN

SHEET INFO

DESIGNED:	
DRAWN:	SCC
CHECKED:	JEF/NWB
APPROVED:	
LAST EDIT:	2/1/2012
PLOT DATE:	2/21/2012
SUBMITTAL:	

REVISIONS

NO.	BY	DATE	REMARKS

WHPacific

123 SW Columbia Street
Bend, OR 97702
541-388-4255 Fax 541-388-4229
www.whpacific.com