

PORT OF MORROW  
Water Rights Transfer Map for  
Place of Use, Type of Use, & Added POA  
in Port Municipal Service Area

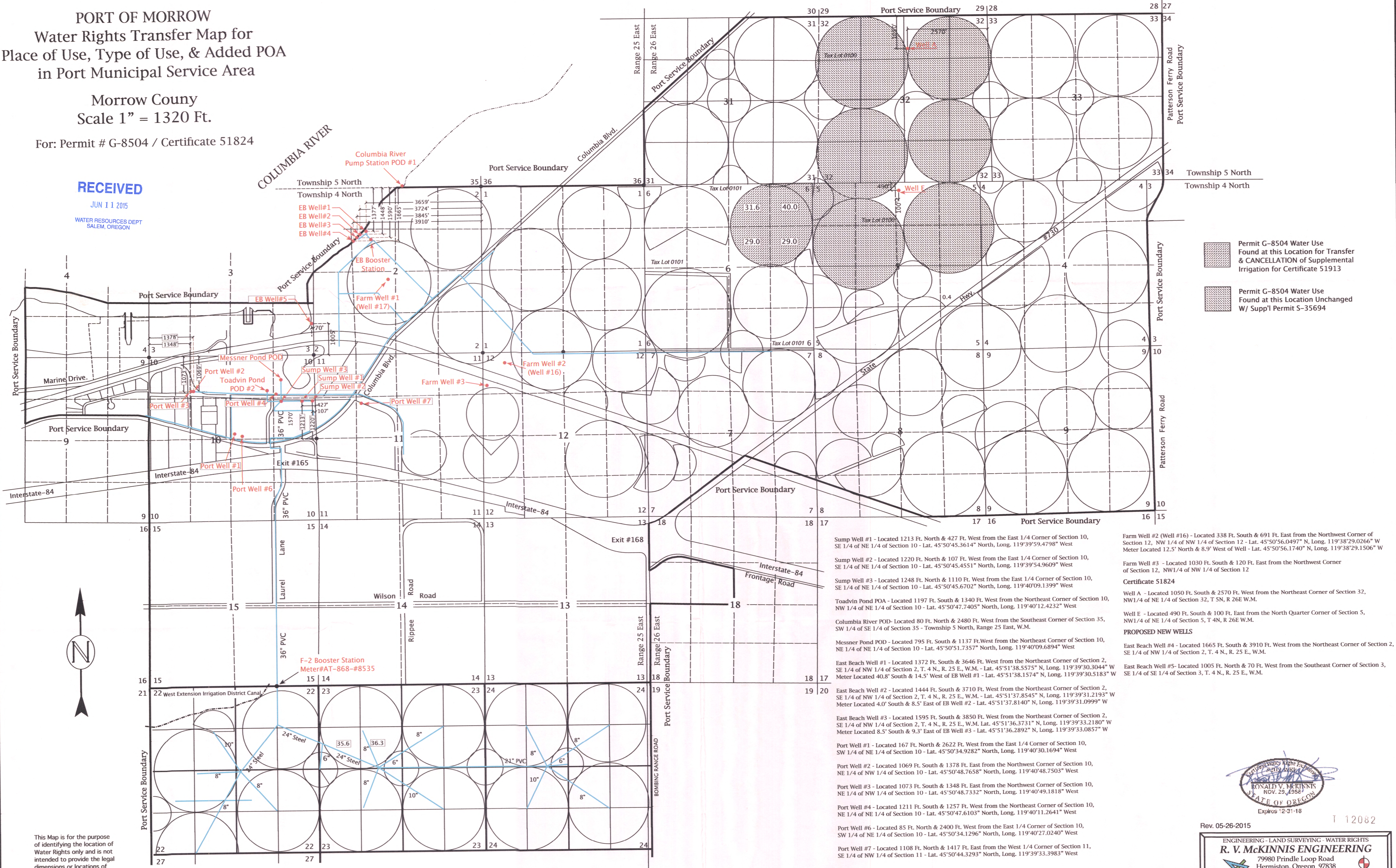
Morrow County  
Scale 1" = 1320 Ft.

For: Permit # G-8504 / Certificate 51824

RECEIVED

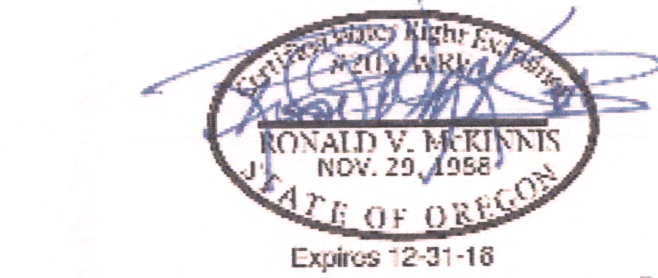
JUN 11 2015

WATER RESOURCES DEPT  
SALEM, OREGON



This Map is for the purpose  
of identifying the location of  
Water Rights only and is not  
intended to provide the legal  
dimensions or locations of  
property ownership lines.

- Sump Well #1 - Located 1213 Ft. North & 427 Ft. West from the East 1/4 Corner of Section 10, SE 1/4 of NE 1/4 of Section 10 - Lat. 45°50'45.3614" North, Long. 119°39'59.4798" West
- Sump Well #2 - Located 1220 Ft. North & 107 Ft. West from the East 1/4 Corner of Section 10, SE 1/4 of NE 1/4 of Section 10 - Lat. 45°50'45.4551" North, Long. 119°39'54.9609" West
- Sump Well #3 - Located 1248 Ft. North & 1110 Ft. West from the East 1/4 Corner of Section 10, SE 1/4 of NE 1/4 of Section 10 - Lat. 45°50'45.6702" North, Long. 119°40'09.1399" West
- Toadvin Pond POA - Located 1197 Ft. South & 1340 Ft. West from the Northeast Corner of Section 10, NW 1/4 of NE 1/4 of Section 10 - Lat. 45°50'47.7405" North, Long. 119°40'12.4232" West
- Columbia River POD - Located 80 Ft. North & 2480 Ft. West from the Southeast Corner of Section 35, SW 1/4 of SE 1/4 of Section 35 - Township 5 North, Range 25 East, W.M.
- Messner Pond POD - Located 795 Ft. South & 1137 Ft. West from the Northeast Corner of Section 10, NE 1/4 of NE 1/4 of Section 10 - Lat. 45°50'51.7357" North, Long. 119°40'09.6894" West
- East Beach Well #1 - Located 1372 Ft. South & 3646 Ft. West from the Northeast Corner of Section 2, SE 1/4 of NW 1/4 of Section 2, T. 4 N., R. 25 E., W.M. - Lat. 45°51'38.5575" N, Long. 119°39'30.3044" W Meter Located 40.8' South & 14.5' West of EB Well #1 - Lat. 45°51'38.1574" N, Long. 119°39'30.5183" W
- East Beach Well #2 - Located 1444 Ft. South & 3710 Ft. West from the Northeast Corner of Section 2, SE 1/4 of NW 1/4 of Section 2, T. 4 N., R. 25 E., W.M. - Lat. 45°51'37.8545" N, Long. 119°39'31.2193" W Meter Located 4.0' South & 8.5' East of EB Well #2 - Lat. 45°51'37.8140" N, Long. 119°39'31.0999" W
- East Beach Well #3 - Located 1595 Ft. South & 3850 Ft. West from the Northeast Corner of Section 2, SE 1/4 of NW 1/4 of Section 2, T. 4 N., R. 25 E., W.M. Lat. 45°51'36.3731" N, Long. 119°39'33.2180" W Meter Located 8.5' South & 9.3' East of EB Well #3 - Lat. 45°51'36.2892" N, Long. 119°39'33.0857" W
- Port Well #1 - Located 167 Ft. North & 2622 Ft. West from the East 1/4 Corner of Section 10, SW 1/4 of NE 1/4 of Section 10 - Lat. 45°50'34.9282" North, Long. 119°40'30.1694" West
- Port Well #2 - Located 1069 Ft. South & 1378 Ft. East from the Northwest Corner of Section 10, NE 1/4 of NW 1/4 of Section 10 - Lat. 45°50'48.7658" North, Long. 119°40'48.7503" West
- Port Well #3 - Located 1073 Ft. South & 1348 Ft. East from the Northwest Corner of Section 10, NE 1/4 of NW 1/4 of Section 10 - Lat. 45°50'48.7332" North, Long. 119°40'49.1818" West
- Port Well #4 - Located 1211 Ft. South & 1257 Ft. West from the Northeast Corner of Section 10, NE 1/4 of NE 1/4 of Section 10 - Lat. 45°50'47.6103" North, Long. 119°40'11.2641" West
- Port Well #6 - Located 85 Ft. North & 2400 Ft. West from the East 1/4 Corner of Section 10, SW 1/4 of NE 1/4 of Section 10 - Lat. 45°50'34.1296" North, Long. 119°40'27.0240" West
- Port Well #7 - Located 1108 Ft. North & 1417 Ft. East from the West 1/4 Corner of Section 11, SE 1/4 of NW 1/4 of Section 11 - Lat. 45°50'44.3293" North, Long. 119°39'33.3983" West
- Farm Well #2 (Well #16) - Located 338 Ft. South & 691 Ft. East from the Northwest Corner of Section 12, NW 1/4 of NW 1/4 of Section 12 - Lat. 45°50'56.0497" N, Long. 119°38'29.0266" W Meter Located 12.5' North & 8.9' West of Well - Lat. 45°50'56.1740" N, Long. 119°38'29.1506" W
- Farm Well #3 - Located 1030 Ft. South & 120 Ft. East from the Northwest Corner of Section 12, NW 1/4 of NW 1/4 of Section 12
- Certificate 51824**
- Well A - Located 1050 Ft. South & 2570 Ft. West from the Northeast Corner of Section 32, NW 1/4 of NE 1/4 of Section 32, T. 5 N., R. 26 E. W.M.
- Well E - Located 490 Ft. South & 100 Ft. East from the North Quarter Corner of Section 5, NW 1/4 of NE 1/4 of Section 5, T. 4 N., R. 26 E. W.M.
- PROPOSED NEW WELLS**
- East Beach Well #4 - Located 1665 Ft. South & 3910 Ft. West from the Northeast Corner of Section 2, SE 1/4 of NW 1/4 of Section 2, T. 4 N., R. 25 E., W.M.
- East Beach Well #5 - Located 1005 Ft. North & 70 Ft. West from the Southeast Corner of Section 3, SE 1/4 of SE 1/4 of Section 3, T. 4 N., R. 25 E., W.M.



Rev. 05-26-2015

ENGINEERING - LAND SURVEYING - WATER RIGHTS  
**R. V. MCKINNIS ENGINEERING**  
79980 Prindle Loop Road  
Hermiston, Oregon 97838  
(541) -567-2017



PORT OF MORROW  
Water Rights Transfer Map for  
Place of Use, Type of Use, & Added POA  
in Port Municipal Service Area

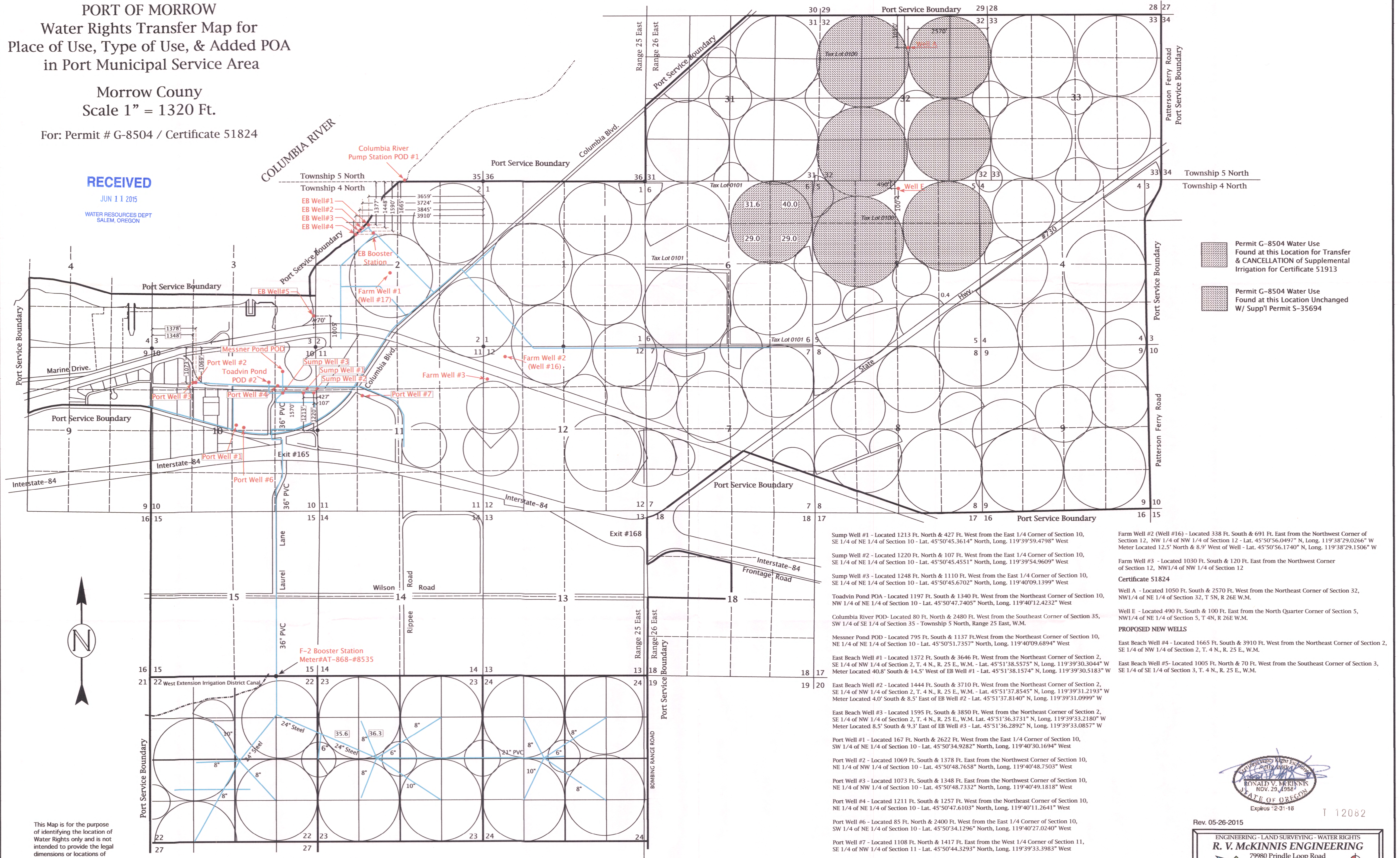
Morrow County  
Scale 1" = 1320 Ft.

For: Permit # G-8504 / Certificate 51824

RECEIVED

JUN 11 2015

WATER RESOURCES DEPT  
SALEM, OREGON



This Map is for the purpose of identifying the location of Water Rights only and is not intended to provide the legal dimensions or locations of property ownership lines.

Sump Well #1 - Located 1213 Ft. North & 427 Ft. West from the East 1/4 Corner of Section 10, SE 1/4 of NE 1/4 of Section 10 - Lat. 45°50'45.3614" North, Long. 119°39'59.4798" West

Sump Well #2 - Located 1220 Ft. North & 107 Ft. West from the East 1/4 Corner of Section 10, SE 1/4 of NE 1/4 of Section 10 - Lat. 45°50'45.4551" North, Long. 119°39'54.9609" West

Sump Well #3 - Located 1248 Ft. North & 1110 Ft. West from the East 1/4 Corner of Section 10, SE 1/4 of NE 1/4 of Section 10 - Lat. 45°50'45.6702" North, Long. 119°40'09.1399" West

Toadvin Pond POA - Located 1197 Ft. South & 1340 Ft. West from the Northeast Corner of Section 10, NW 1/4 of NE 1/4 of Section 10 - Lat. 45°50'47.7405" North, Long. 119°40'12.4232" West

Columbia River POD - Located 80 Ft. North & 2480 Ft. West from the Southeast Corner of Section 35, SW 1/4 of SE 1/4 of Section 35 - Township 5 North, Range 25 East, W.M.

Messner Pond POD - Located 795 Ft. South & 1137 Ft. West from the Northeast Corner of Section 10, NE 1/4 of NE 1/4 of Section 10 - Lat. 45°50'51.7357" North, Long. 119°40'09.6894" West

East Beach Well #1 - Located 1372 Ft. South & 3646 Ft. West from the Northeast Corner of Section 2, SE 1/4 of NW 1/4 of Section 2, T. 4 N., R. 25 E., W.M. - Lat. 45°51'38.5575" N, Long. 119°39'30.3044" W Meter Located 40.8' South & 14.5' West of EB Well #1 - Lat. 45°51'38.1574" N, Long. 119°39'30.5183" W

East Beach Well #2 - Located 1444 Ft. South & 3710 Ft. West from the Northeast Corner of Section 2, SE 1/4 of NW 1/4 of Section 2, T. 4 N., R. 25 E., W.M. - Lat. 45°51'37.8545" N, Long. 119°39'31.2193" W Meter Located 4.0' South & 8.5' East of EB Well #2 - Lat. 45°51'37.8140" N, Long. 119°39'31.0999" W

East Beach Well #3 - Located 1595 Ft. South & 3850 Ft. West from the Northeast Corner of Section 2, SE 1/4 of NW 1/4 of Section 2, T. 4 N., R. 25 E., W.M. Lat. 45°51'36.3731" N, Long. 119°39'33.2180" W Meter Located 8.5' South & 9.3' East of EB Well #3 - Lat. 45°51'36.2892" N, Long. 119°39'33.0857" W

Port Well #1 - Located 167 Ft. North & 2622 Ft. West from the East 1/4 Corner of Section 10, SW 1/4 of NE 1/4 of Section 10 - Lat. 45°50'34.9282" North, Long. 119°40'30.1694" West

Port Well #2 - Located 1069 Ft. South & 1378 Ft. East from the Northwest Corner of Section 10, NE 1/4 of NW 1/4 of Section 10 - Lat. 45°50'48.7658" North, Long. 119°40'48.7503" West

Port Well #3 - Located 1073 Ft. South & 1348 Ft. East from the Northwest Corner of Section 10, NE 1/4 of NW 1/4 of Section 10 - Lat. 45°50'48.7332" North, Long. 119°40'49.1818" West

Port Well #4 - Located 1211 Ft. South & 1257 Ft. West from the Northeast Corner of Section 10, NE 1/4 of NE 1/4 of Section 10 - Lat. 45°50'47.6103" North, Long. 119°40'11.2641" West

Port Well #6 - Located 85 Ft. North & 2400 Ft. West from the East 1/4 Corner of Section 10, SW 1/4 of NE 1/4 of Section 10 - Lat. 45°50'34.1296" North, Long. 119°40'27.0240" West

Port Well #7 - Located 1108 Ft. North & 1417 Ft. East from the West 1/4 Corner of Section 11, SE 1/4 of NW 1/4 of Section 11 - Lat. 45°50'44.3293" North, Long. 119°39'33.3983" West

Farm Well #2 (Well #16) - Located 338 Ft. South & 691 Ft. East from the Northwest Corner of Section 12, NW 1/4 of NW 1/4 of Section 12 - Lat. 45°50'56.0497" N, Long. 119°38'29.0266" W Meter Located 12.5' North & 8.9' West of Well - Lat. 45°50'56.1740" N, Long. 119°38'29.1506" W

Farm Well #3 - Located 1030 Ft. South & 120 Ft. East from the Northwest Corner of Section 12, NW 1/4 of NW 1/4 of Section 12

**Certificate 51824**

Well A - Located 1050 Ft. South & 2570 Ft. West from the Northeast Corner of Section 32, NW 1/4 of NE 1/4 of Section 32, T. 5 N., R. 26 E. W.M.

Well E - Located 490 Ft. South & 100 Ft. West from the North Quarter Corner of Section 5, NW 1/4 of NE 1/4 of Section 5, T. 4 N., R. 25 E., W.M.

**PROPOSED NEW WELLS**

East Beach Well #4 - Located 1665 Ft. South & 3910 Ft. West from the Northeast Corner of Section 2, SE 1/4 of NW 1/4 of Section 2, T. 4 N., R. 25 E., W.M.

East Beach Well #5 - Located 1005 Ft. North & 70 Ft. West from the Southeast Corner of Section 3, SE 1/4 of SE 1/4 of Section 3, T. 4 N., R. 25 E., W.M.



Rev. 05-26-2015

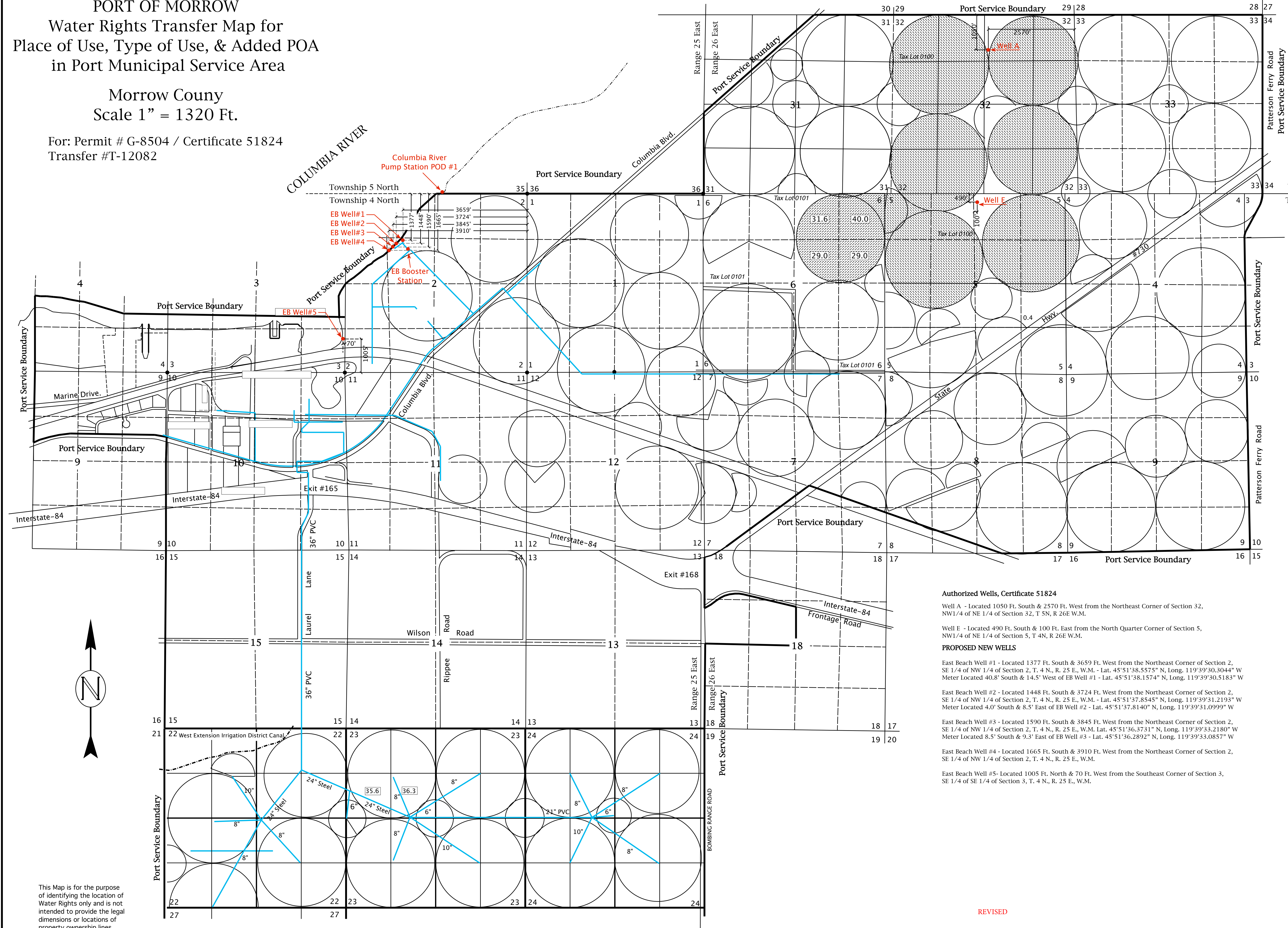
ENGINEERING - LAND SURVEYING - WATER RIGHTS  
**R. V. McKINNIS ENGINEERING**  
79980 Prindle Loop Road  
Hermiston, Oregon 97838  
(541) 567-2017



PORT OF MORROW  
Water Rights Transfer Map for  
Place of Use, Type of Use, & Added POA  
in Port Municipal Service Area

Morrow County  
Scale 1" = 1320 Ft.

For: Permit # G-8504 / Certificate 51824  
Transfer #T-12082



- Permit G-8504 Water Use  
Found at this Location for Transfer  
& CANCELLATION of Supplemental  
Irrigation for Certificate 51913
- Permit G-8504 Water Use  
Found at this Location Unchanged  
W/ Suppl Permit S-35694

Authorized Wells, Certificate 51824

Well A - Located 1050 Ft. South & 2570 Ft. West from the Northeast Corner of Section 32,  
NW1/4 of NE 1/4 of Section 32, T 5N, R 26E W.M.

Well E - Located 490 Ft. South & 100 Ft. East from the North Quarter Corner of Section 5,  
NW1/4 of NE 1/4 of Section 5, T 4N, R 26E W.M.

PROPOSED NEW WELLS

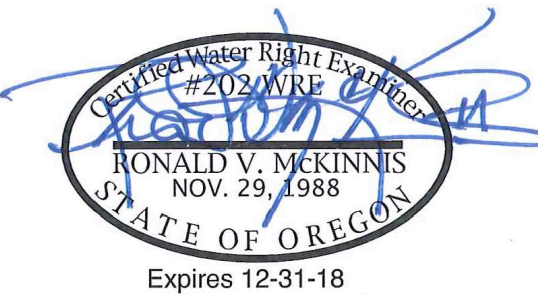
East Beach Well #1 - Located 1377 Ft. South & 3659 Ft. West from the Northeast Corner of Section 2,  
SE 1/4 of NW 1/4 of Section 2, T. 4 N., R. 25 E., W.M. - Lat. 45°51'38.5575" N, Long. 119°39'30.3044" W  
Meter Located 40.8' South & 14.5' West of EB Well #1 - Lat. 45°51'38.1574" N, Long. 119°39'30.5183" W

East Beach Well #2 - Located 1448 Ft. South & 3724 Ft. West from the Northeast Corner of Section 2,  
SE 1/4 of NW 1/4 of Section 2, T. 4 N., R. 25 E., W.M. - Lat. 45°51'37.8545" N, Long. 119°39'31.2193" W  
Meter Located 4.0' South & 8.5' East of EB Well #2 - Lat. 45°51'37.8140" N, Long. 119°39'31.0999" W

East Beach Well #3 - Located 1590 Ft. South & 3845 Ft. West from the Northeast Corner of Section 2,  
SE 1/4 of NW 1/4 of Section 2, T. 4 N., R. 25 E., W.M. Lat. 45°51'36.3731" N, Long. 119°39'33.2180" W  
Meter Located 8.5' South & 9.3' East of EB Well #3 - Lat. 45°51'36.2892" N, Long. 119°39'33.0857" W

East Beach Well #4 - Located 1665 Ft. South & 3910 Ft. West from the Northeast Corner of Section 2,  
SE 1/4 of NW 1/4 of Section 2, T. 4 N., R. 25 E., W.M.

East Beach Well #5- Located 1005 Ft. North & 70 Ft. West from the Southeast Corner of Section 3,  
SE 1/4 of SE 1/4 of Section 3, T. 4 N., R. 25 E., W.M.



Rev. 08-02-2017

ENGINEERING - LAND SURVEYING - WATER RIGHTS  
**R. V. McKINNIS ENGINEERING**  
79980 Prindle Loop Road  
Hermiston, Oregon 97838  
(541) -567-2017