

PORT OF MORROW
Water Rights Transfer Map for
Added Point Of Appropriation
in Port Municipal Service Area

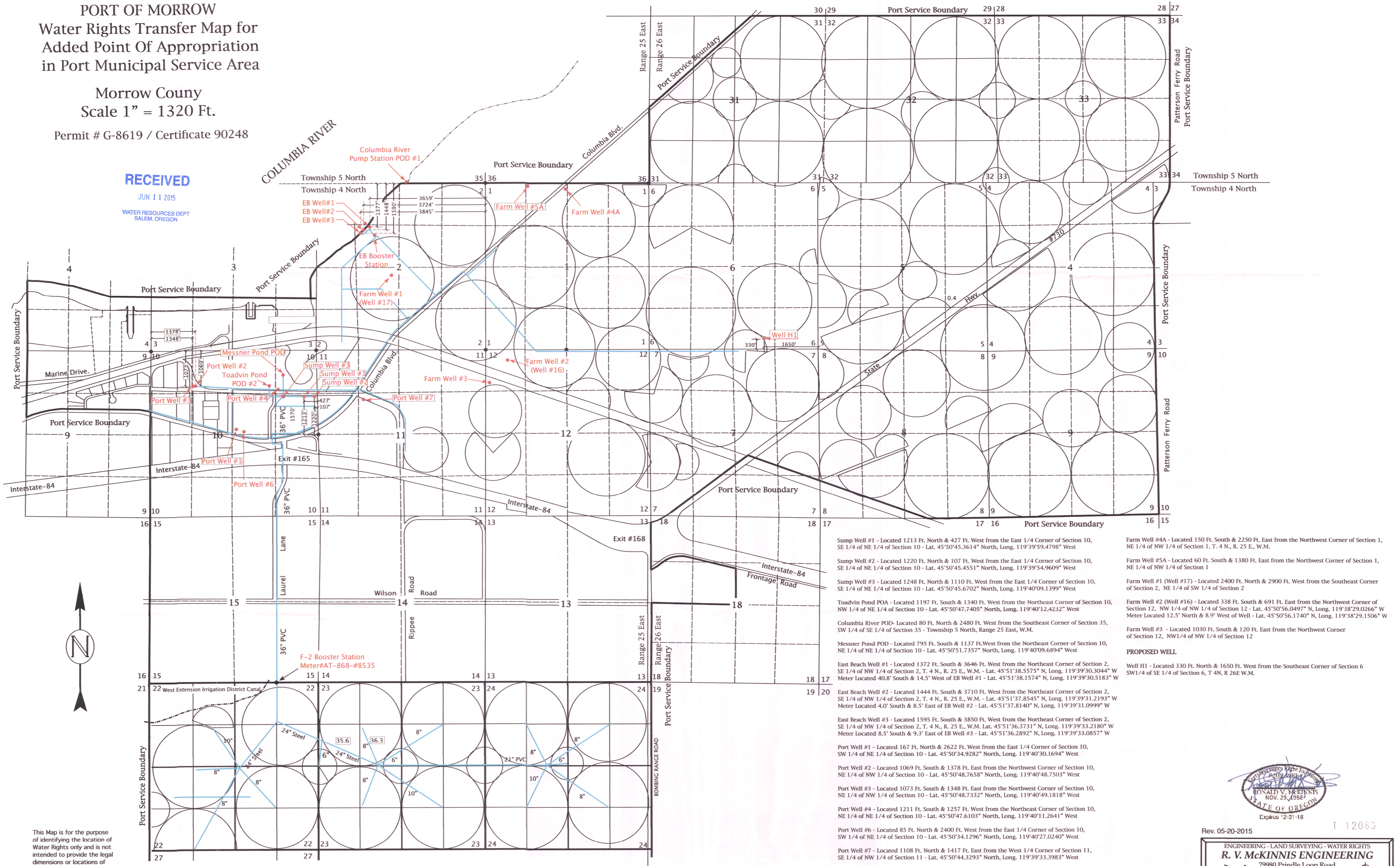
Morrow County
Scale 1" = 1320 Ft.

Permit # G-8619 / Certificate 90248

RECEIVED

JUN 11 2015

WATER RESOURCES DEPT
SALEM, OREGON



This Map is for the purpose
of identifying the location of
Water Rights only and is not
intended to provide the legal
dimensions or locations of
property ownership lines.

Sump Well #1 - Located 1213 Ft. North & 427 Ft. West from the East 1/4 Corner of Section 10, SE 1/4 of NE 1/4 of Section 10 - Lat. 45°50'45.3614" North, Long. 119°39'59.4798" West

Sump Well #2 - Located 1220 Ft. North & 107 Ft. West from the East 1/4 Corner of Section 10, SE 1/4 of NE 1/4 of Section 10 - Lat. 45°50'45.4551" North, Long. 119°39'54.9609" West

Sump Well #3 - Located 1248 Ft. North & 1110 Ft. West from the East 1/4 Corner of Section 10, SE 1/4 of NE 1/4 of Section 10 - Lat. 45°50'45.6702" North, Long. 119°40'09.1399" West

Toadvin Pond POA - Located 1197 Ft. South & 1340 Ft. West from the Northeast Corner of Section 10, NW 1/4 of NE 1/4 of Section 10 - Lat. 45°50'47.7405" North, Long. 119°40'12.4232" West

Columbia River POD - Located 80 Ft. North & 2480 Ft. West from the Southeast Corner of Section 35, SW 1/4 of SE 1/4 of Section 35 - Township 5 North, Range 25 East, W.M.

Messner Pond POD - Located 795 Ft. South & 1137 Ft. West from the Northeast Corner of Section 10, NE 1/4 of NE 1/4 of Section 10 - Lat. 45°50'51.7357" North, Long. 119°40'09.6894" West

East Beach Well #1 - Located 1372 Ft. South & 3646 Ft. West from the Northeast Corner of Section 2, SE 1/4 of NW 1/4 of Section 2, T. 4 N., R. 25 E., W.M. - Lat. 45°51'38.5575" N, Long. 119°39'30.3044" W Meter Located 40.8" South & 14.5" West of EB Well #1 - Lat. 45°51'38.1574" N, Long. 119°39'30.5183" W

East Beach Well #2 - Located 1444 Ft. South & 3710 Ft. West from the Northeast Corner of Section 2, SE 1/4 of NW 1/4 of Section 2, T. 4 N., R. 25 E., W.M. - Lat. 45°51'37.8545" N, Long. 119°39'31.2193" W Meter Located 4.0" South & 8.5" East of EB Well #2 - Lat. 45°51'37.8140" N, Long. 119°39'31.0999" W

East Beach Well #3 - Located 1595 Ft. South & 3850 Ft. West from the Northeast Corner of Section 2, SE 1/4 of NW 1/4 of Section 2, T. 4 N., R. 25 E., W.M. Lat. 45°51'36.3731" N, Long. 119°39'33.2180" W Meter Located 8.5" South & 9.3" East of EB Well #3 - Lat. 45°51'36.2892" N, Long. 119°39'33.0857" W

Port Well #1 - Located 167 Ft. North & 2622 Ft. West from the East 1/4 Corner of Section 10, SW 1/4 of NE 1/4 of Section 10 - Lat. 45°50'34.9282" North, Long. 119°40'30.1694" West

Port Well #2 - Located 1069 Ft. South & 1378 Ft. East from the Northwest Corner of Section 10, NE 1/4 of NW 1/4 of Section 10 - Lat. 45°50'48.7658" North, Long. 119°40'48.7503" West

Port Well #3 - Located 1073 Ft. South & 1348 Ft. East from the Northwest Corner of Section 10, NE 1/4 of NW 1/4 of Section 10 - Lat. 45°50'48.7332" North, Long. 119°40'49.1818" West

Port Well #4 - Located 1211 Ft. South & 1257 Ft. West from the Northeast Corner of Section 10, NE 1/4 of NE 1/4 of Section 10 - Lat. 45°50'47.6103" North, Long. 119°40'11.2641" West

Port Well #6 - Located 85 Ft. North & 2400 Ft. West from the East 1/4 Corner of Section 10, SW 1/4 of NE 1/4 of Section 10 - Lat. 45°50'34.1296" North, Long. 119°40'27.0240" West

Port Well #7 - Located 1108 Ft. North & 1417 Ft. East from the West 1/4 Corner of Section 11, SE 1/4 of NW 1/4 of Section 11 - Lat. 45°50'44.3293" North, Long. 119°39'33.3983" West

Farm Well #4A - Located 150 Ft. South & 2250 Ft. East from the Northwest Corner of Section 1, NE 1/4 of NW 1/4 of Section 1, T. 4 N., R. 25 E., W.M.

Farm Well #5A - Located 60 Ft. South & 1380 Ft. East from the Northwest Corner of Section 1, NE 1/4 of NW 1/4 of Section 1

Farm Well #1 (Well #17) - Located 2400 Ft. North & 2900 Ft. West from the Southeast Corner of Section 2, NE 1/4 of SW 1/4 of Section 2

Farm Well #2 (Well #16) - Located 338 Ft. South & 691 Ft. East from the Northwest Corner of Section 12, NW 1/4 of NW 1/4 of Section 12 - Lat. 45°50'56.0497" N, Long. 119°38'29.0266" W Meter Located 12.5" North & 8.9" West of Well - Lat. 45°50'56.1740" N, Long. 119°38'29.1506" W

Farm Well #3 - Located 1030 Ft. South & 120 Ft. East from the Northwest Corner of Section 12, NW 1/4 of NW 1/4 of Section 12

PROPOSED WELL

Well H1 - Located 330 Ft. North & 1650 Ft. West from the Southeast Corner of Section 6 SW 1/4 of SE 1/4 of Section 6, T. 4 N., R. 26 E. W.M.



Rev. 05-20-2015

ENGINEERING - LAND SURVEYING - WATER RIGHTS
R. V. MCKINNIS ENGINEERING
79980 Prindle Loop Road
Hermiston, Oregon 97838
(541)-567-2017

PORT OF MORROW
Water Rights Transfer Map for
Added Point Of Appropriation
in Port Municipal Service Area

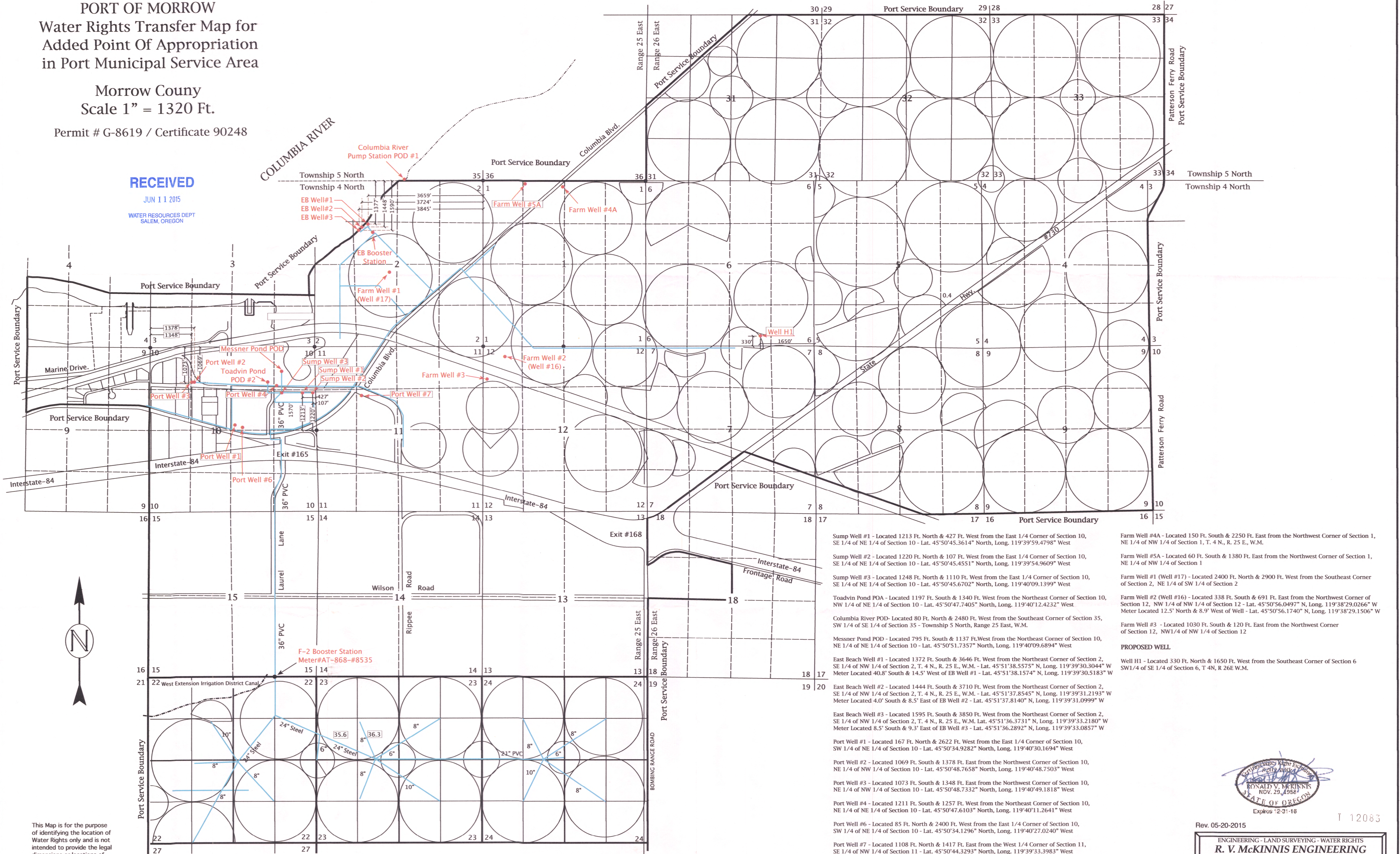
Morrow County
Scale 1" = 1320 Ft.

Permit # G-8619 / Certificate 90248

RECEIVED

JUN 11 2015

WATER RESOURCES DEPT
SALEM, OREGON



This Map is for the purpose of identifying the location of Water Rights only and is not intended to provide the legal dimensions or locations of property ownership lines.



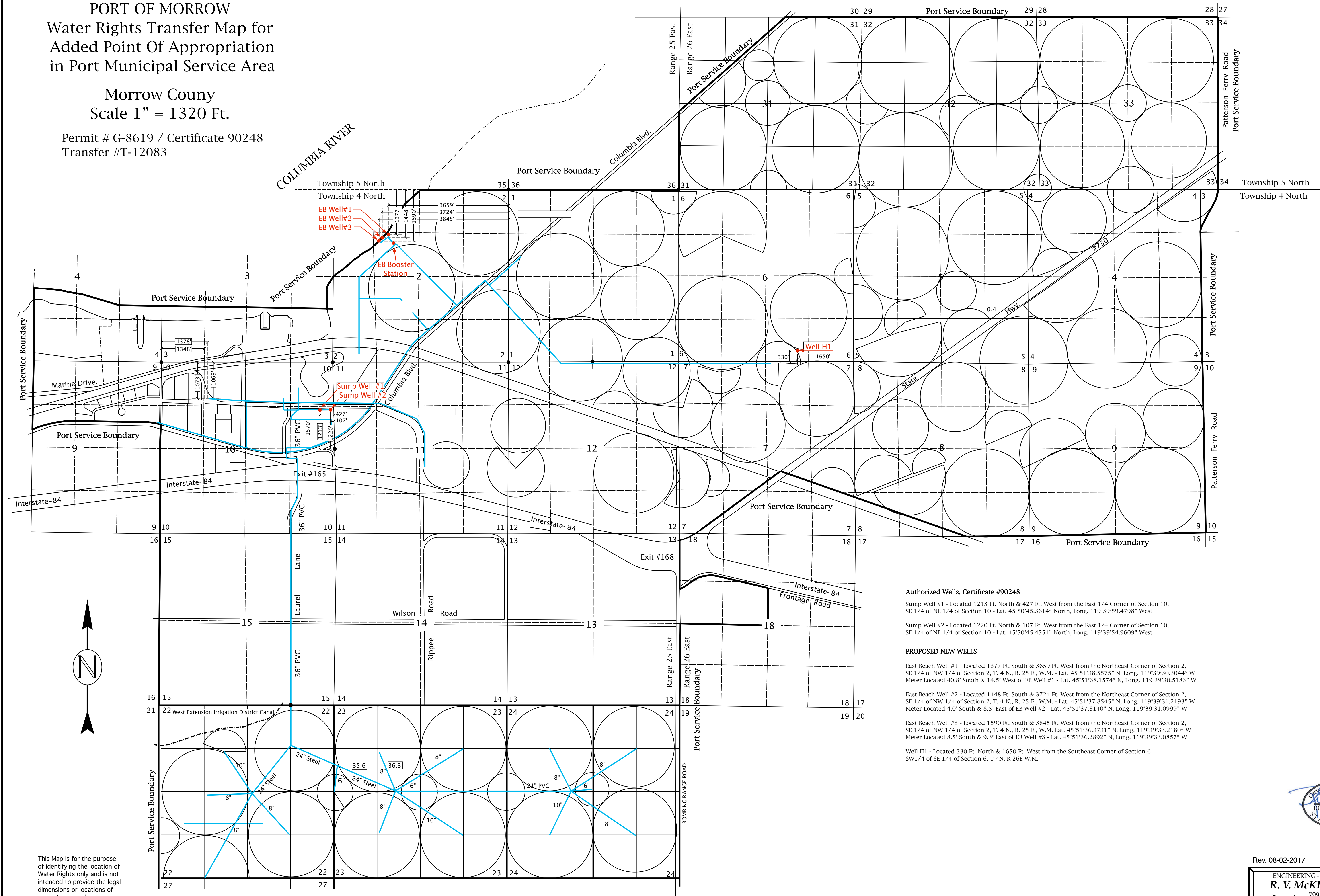
Rev. 05-20-2015

ENGINEERING - LAND SURVEYING - WATER RIGHTS
R. V. McKINNIS ENGINEERING
79980 Prindle Loop Road
Hermiston, Oregon 97838
(541) -567-2017

PORT OF MORROW
Water Rights Transfer Map for
Added Point Of Appropriation
in Port Municipal Service Area

Morrow County
Scale 1" = 1320 Ft.

Permit # G-8619 / Certificate 90248
Transfer #T-12083



Authorized Wells, Certificate #90248

Sump Well #1 - Located 1213 Ft. North & 427 Ft. West from the East 1/4 Corner of Section 10, SE 1/4 of NE 1/4 of Section 10 - Lat. 45°50'45.3614" North, Long. 119°39'59.4798" West

Sump Well #2 - Located 1220 Ft. North & 107 Ft. West from the East 1/4 Corner of Section 10, SE 1/4 of NE 1/4 of Section 10 - Lat. 45°50'45.4551" North, Long. 119°39'54.9609" West

PROPOSED NEW WELLS

East Beach Well #1 - Located 1377 Ft. South & 3659 Ft. West from the Northeast Corner of Section 2, SE 1/4 of NW 1/4 of Section 2, T. 4 N., R. 25 E., W.M. - Lat. 45°51'38.5575" N, Long. 119°39'30.3044" W
Meter Located 40.8' South & 14.5' West of EB Well #1 - Lat. 45°51'38.1574" N, Long. 119°39'30.5183" W

East Beach Well #2 - Located 1448 Ft. South & 3724 Ft. West from the Northeast Corner of Section 2, SE 1/4 of NW 1/4 of Section 2, T. 4 N., R. 25 E., W.M. - Lat. 45°51'37.8545" N, Long. 119°39'31.2193" W
Meter Located 4.0' South & 8.5' East of EB Well #2 - Lat. 45°51'37.8140" N, Long. 119°39'31.0999" W

East Beach Well #3 - Located 1590 Ft. South & 3845 Ft. West from the Northeast Corner of Section 2, SE 1/4 of NW 1/4 of Section 2, T. 4 N., R. 25 E., W.M. - Lat. 45°51'36.3731" N, Long. 119°39'33.2180" W
Meter Located 8.5' South & 9.3' East of EB Well #3 - Lat. 45°51'36.2892" N, Long. 119°39'33.0857" W

Well H1 - Located 330 Ft. North & 1650 Ft. West from the Southeast Corner of Section 6 SW1/4 of SE 1/4 of Section 6, T. 4N, R. 26E W.M.

This Map is for the purpose of identifying the location of Water Rights only and is not intended to provide the legal dimensions or locations of property ownership lines.

Amended



Rev. 08-02-2017

ENGINEERING - LAND SURVEYING - WATER RIGHTS
R. V. McKINNIS ENGINEERING
79980 Prindle Loop Road
Hermiston, Oregon 97838
(541) -567-2017