

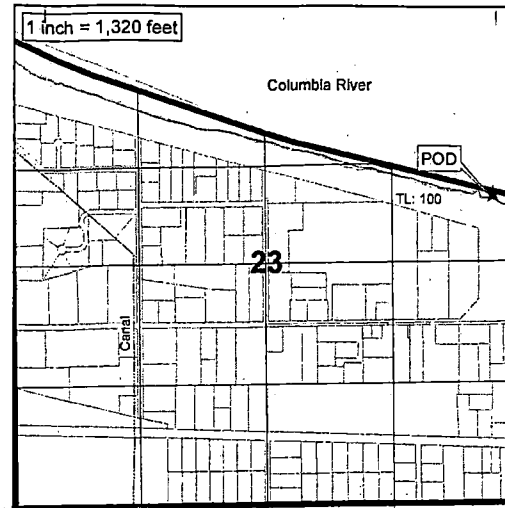
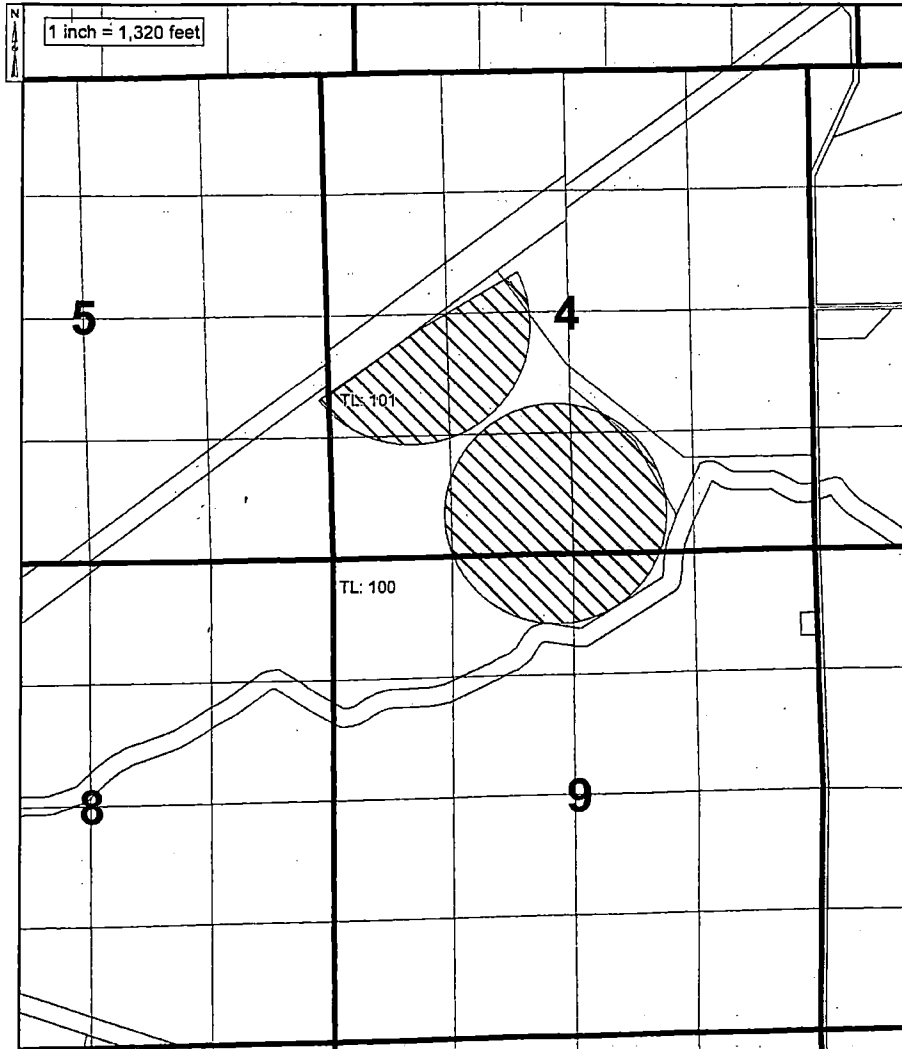
RECEIVED BY OWRD

DEC 26 2017

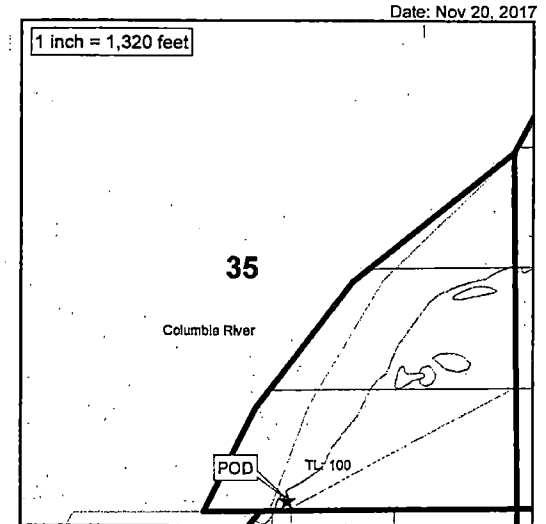
SALEM, OR

T 12808

2017 PERMANENT ADDITIONAL POINT OF DIVERSION TRANSFER C.87799
TOWNSHIP 4 NORTH, RANGE 26 EAST, WILLAMETTE MERIDIAN
Kaizen & West Extension Irrigation District - Morrow County



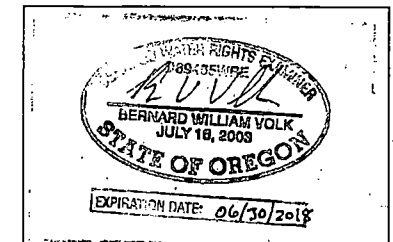
AUTHORIZED WEID IRRIGON POD
5N 26E W.M. Sec. 23, SE/NE: 800' N and
200' W from the E 1/4 Corner of Section 23.



PROPOSED PORT OF MORROW CR POD
5N 25E W.M. Sec. 35, SW/SE: 80' N and
2480' W from the SE Corner of Section 35.

Kaizen Holdings

Authorized Place of Use C.87799
0.2 acres in SW/NW, Sec. 4 T4N, R26E, W.M.
4.7 acres in SE/NW, Sec. 4 T4N, R26E, W.M.
24.8 acres in NE/SW, Sec. 4 T4N, R26E, W.M.
29.7 acres in NW/SW, Sec. 4 T4N, R26E, W.M.
3.4 acres in SW/SW, Sec. 4 T4N, R26E, W.M.
39.4 acres in SE/SW, Sec. 4 T4N, R26E, W.M.
2.8 acres in NW/SE, Sec. 4 T4N, R26E, W.M.
26.6 acres in SW/SE, Sec. 4 T4N, R26E, W.M.
0.7 acres in NE/SE, Sec. 5 T4N, R26E, W.M.
9.4 acres in NW/NE, Sec. 9 T4N, R26E, W.M.
17.3 acres in NE/NW, Sec. 9 T4N, R26E, W.M.
0.1 acres in NW/NW, Sec. 9 T4N, R26E, W.M.



RECEIVED BY OWRD

DEC 26 2017

SALEM, OR

THE PURPOSE OF THIS MAP IS TO IDENTIFY THE LOCATION OF THE WATER RIGHT. IT IS NOT INTENDED TO PROVIDE INFORMATION RELATED TO THE LOCATION OF PROPERTY OWNERSHIP BOUNDARY LINES.

T 12808