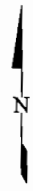
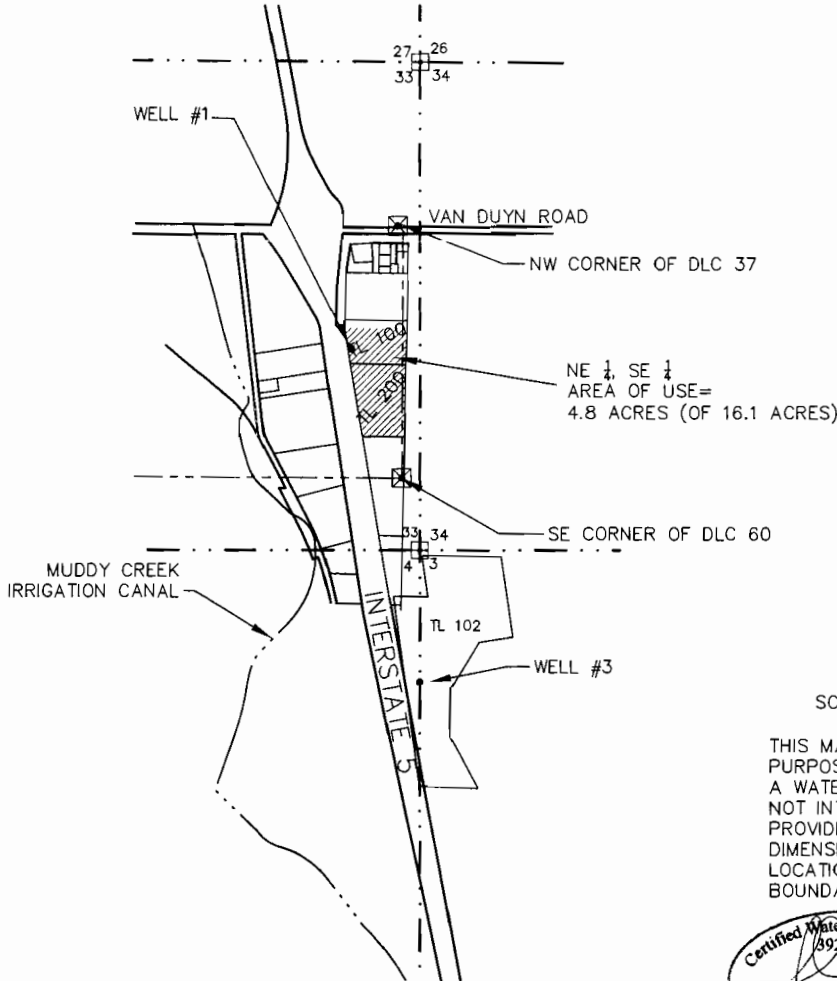


**T.16S., R.3W., W.M.
SECTION 33
MAP FOR WATER RIGHT TRANSFER
PREMIER RV
TAX LOTS 100 AND 200
MAP NO. 16-03-33, 17-03-03
LANE COUNTY, OREGON
November 25, 2008**

BASE MAPPING SUPPLIED
BY LANE COUNTY TAX
MAPS 16-03-33,
16-03-33-002,
16-03-33-40,
17-03-03 AND USGS,
COBURG AND EUGENE
EAST QUADS.

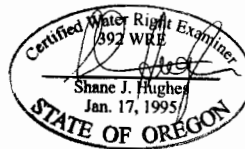
LEGEND

- SECTION LINE
- - - - - DLC LINES
- ⊕ SECTION CORNER
- ⊗ DLC CORNER
- WELL
- ▨ AREA OF USE



SCALE 1"=1320'

THIS MAP IS FOR THE
PURPOSE OF LOCATING
A WATER RIGHT AND IS
NOT INTENDED TO
PROVIDE LEGAL
DIMENSIONS FOR
LOCATION OF PROPERTY
BOUNDARIES.



EXPIRATION DATE: 6/30/09

WELL #1
NE 1/4, SE 1/4
T16S, R3W, W.M., SECTION 33
1377' NORTH AND 536' WEST
FROM THE SE CORNER OF DLC 60

WELL #3
NW 1/4, NW 1/4
T17S, R3W W.M., SECTION 3
4870' SOUTH AND 200' EAST
FROM THE NW CORNER OF DLC 37

RECEIVED

DEC 01 2008

WATER RESOURCES DEPT
SALEM, OREGON



EGR & Associates, Inc.
Engineers and Geologists

2535B Prairie Road (541) 688-8322
Eugene, Oregon 97402 Fax (541) 688-8087