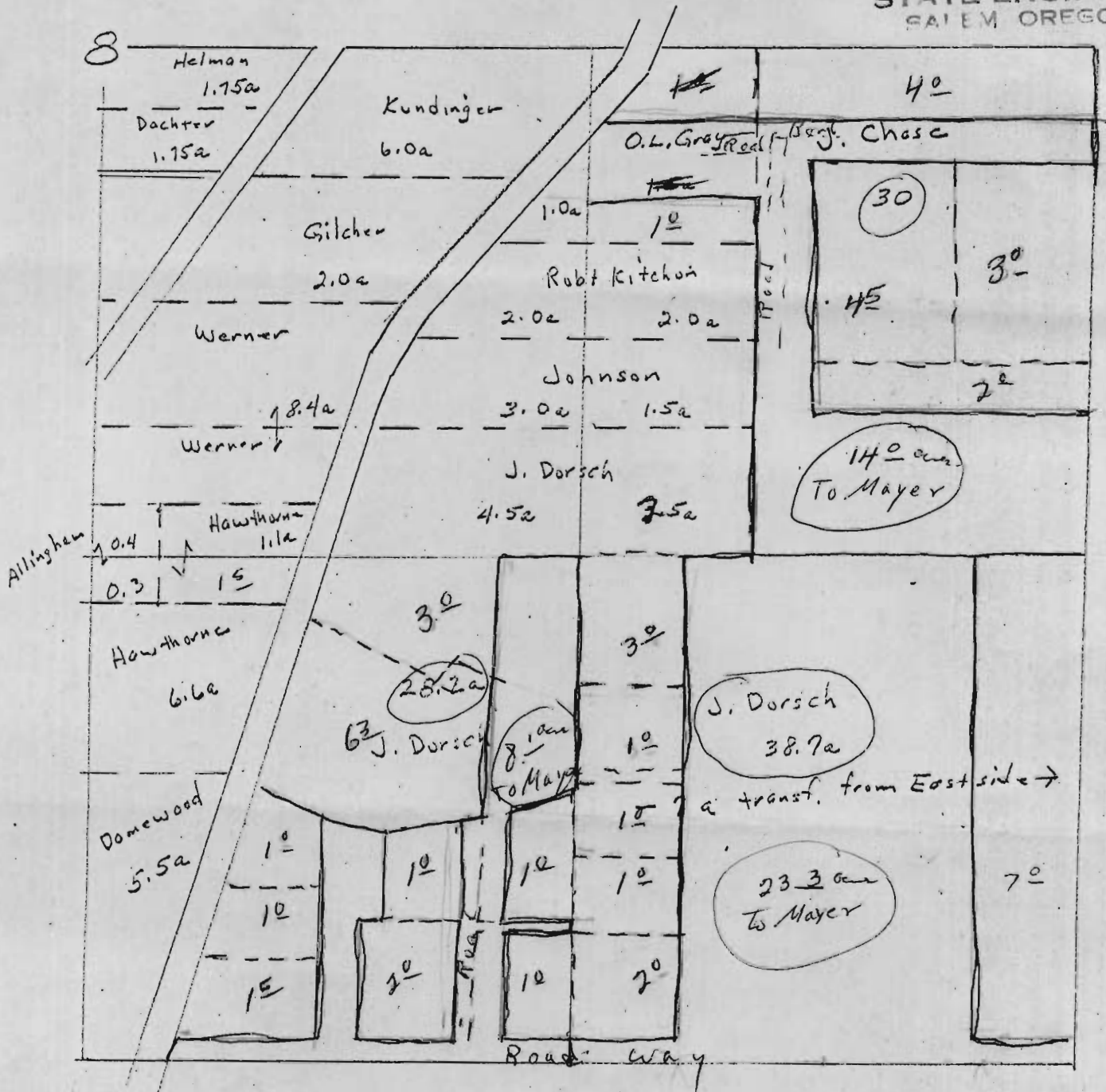


W-113

T18S R12E
SE 1/4 Sec 8

RECEIVED
FEB 24 1966
STATE ENGINEER
SALEM OREGON



1" = 400'
Approx

In SE 1/4 SE 1/4 Transfer to Wm. Mayer et ux 23.3 acres from
Land included in adjudication to J. Dorsch page 22 of Decree.

In SW 1/4 SE 1/4 Transfer to Wm. Mayer et ux 8.1 acres water
from land included in adjudication to J. Dorsch page 22 of Decree

In NE 1/4 SE 1/4 Transfer to Wm. Mayer et ux 15 acres water
from land included in adjudication to O.L. Gray page 22 of Decree
Also, 12.5 acres water
from land included in adjudication to J. Chase page 22 of Decree

All according to Circuit Court case in re relative rights
to the Tributaries of the Deschutes River, Deschutes County.

Transfer Deed to Wm Mayer. State Engineer file W-113