

11801397

11801395

1.3

1180139

G. R. BROWN

TRACTS

UNRECORDED

OUT

Transfer
John E. Webb to the same
5 Acres waterrights to be
transferred from this tract.

Tract 3 - N 526.33' of S. 1186.33' of
E. 1/2 S.E. 1/4 Sec. 12 Twp. 18 R. 12.

ROAD

WARD

See Map 18 13

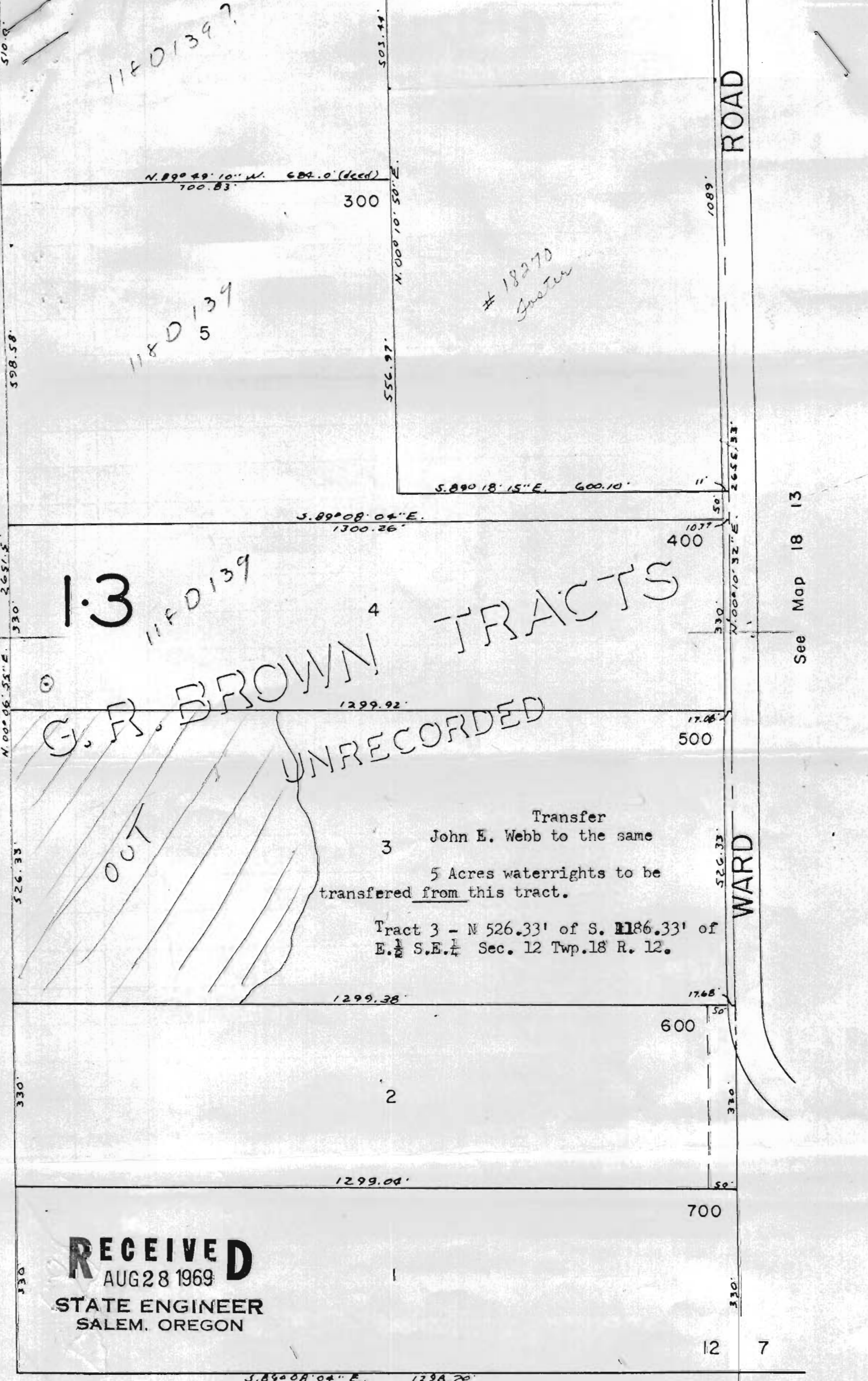
RECEIVED
AUG 28 1969
STATE ENGINEER
SALEM, OREGON

RECEIVED
MAY 23 1969
STATE ENGINEER
SALEM, OREGON

RECEIVED
NOV 19 1968
STATE ENGINEER
SALEM, OREGON

18 12 12D

See Map 18 12



510.0
558.58
330
2.651.5
N. 00° 06' 33" E
526.33
330
330

503.44
N. 00° 10' 50" E
556.97

N. 89° 49' 10" W. 684.0' (deed)
700.83

300

18270
Gunter

S. 89° 18' 15" E. 600.10'

S. 89° 08' 04" E.
1300.26'

400

1299.92'

500

1299.38'

600

1299.04'

700

S. 89° 08' 04" E. 1298.70'

1089'

N. 00° 10' 32" E. 2655.53'

50

330

526.33'

50

330

50

330

12

13

7

18