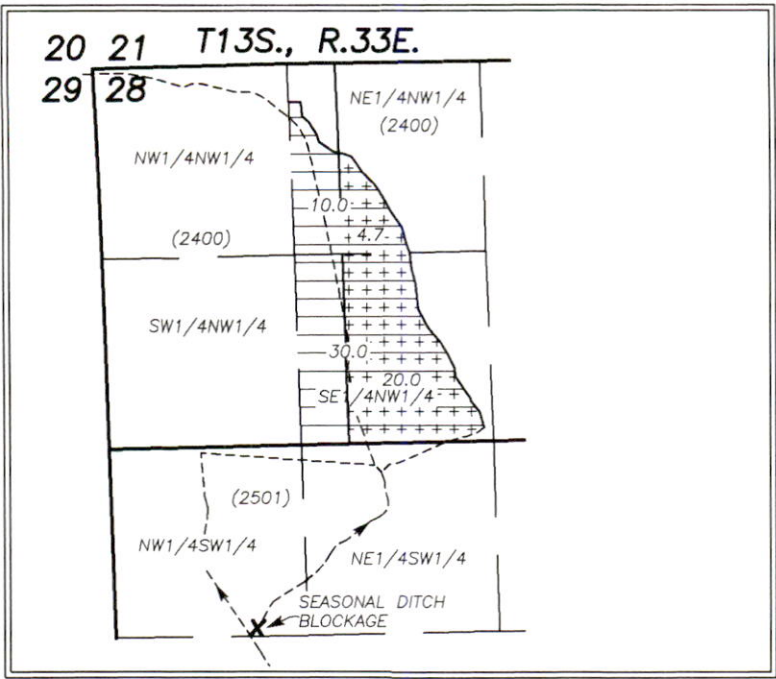


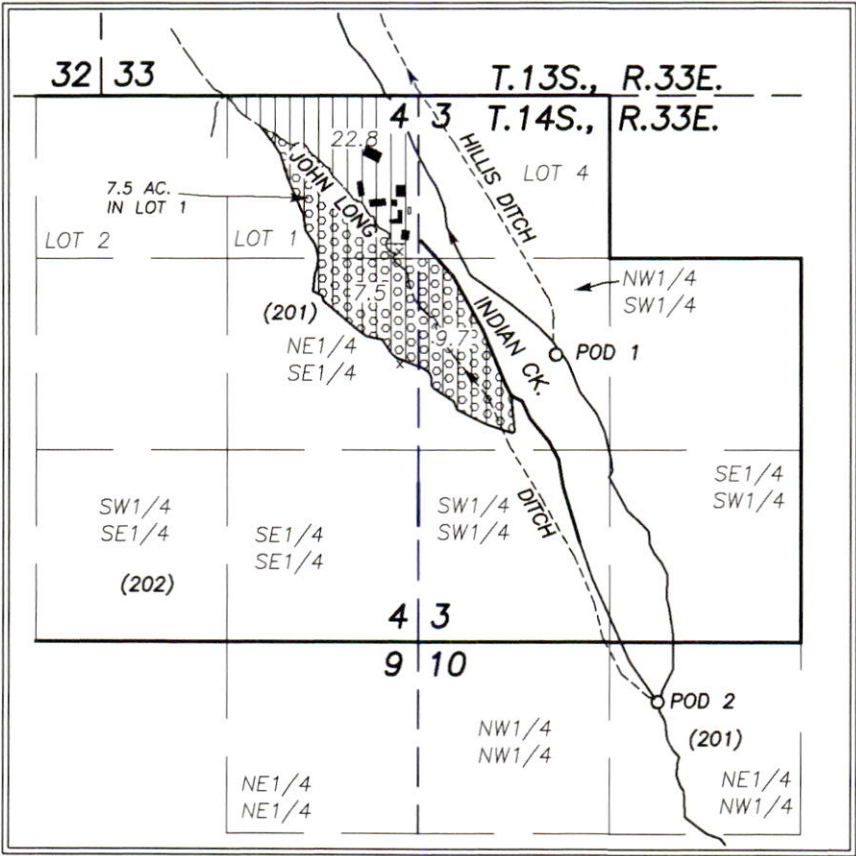
RECEIVED

SEP 26 2022

OWRD



SCALE: 1" = 1320'



CLAIM OF BENEFICIAL USE MAP  
UNDER  
TRANSFER NO. T-10898  
SPECIAL ORDER NO. 117-468  
FOR  
BLUE MOUNTAIN ANGUS, LLC

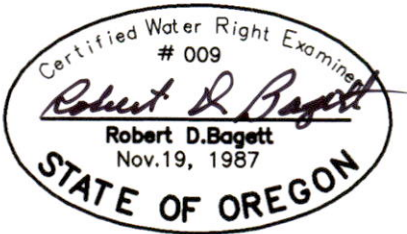
PREPARED BY:  
ROBERT D. BAGETT, PLS, CWRE  
217 N. CANYON BLVD.  
JOHN DAY, OREGON  
(541) 575-1251  
SEPTEMBER 3, 2022

- AUTHORIZED POD'S AS LOCATED MAY 11, 2009
- POD#1: 7070' SOUTH & 3130' EAST FROM THE NW COR. SEC. 33, T.13S., R.33E.  
ODFW FISH SCREEN & FISH BYPASS STRUCTURE BEARS N.7°W., 72 FT.  
MEASURING DEVICE, BEARS N.20°W., 295 FT.
  - POD#2: 9450' SOUTH & 3850' EAST FROM THE NW COR. SEC. 33, T.13S., R.33E.  
ODFW FISH SCREEN & FISH BYPASS STRUCTURE BEARS N.16°W., 150 FT.  
MEASURING DEVICE, BEARS N.16°W., 190 FT.
  - X SEASONAL DITCH BLOCKAGE: 1330' NORTH & 1010' EAST FROM NW COR. SECTION 33, T.13S., R.33E., W.M.

- POD #1  
PRIMARY
- SUPPLEMENTAL
- POD #2  
PRIMARY
- SUPPLEMENTAL

----- DITCH  
( ) TAX LOT NO.

FOUND BRASS CAP MONUMENT AT THE NW  
CORNER SECTION 33, T.13S., R.33E., W.M.



RENEWS 12/31/2023

DISCLAIMER: THIS MAP IS NOT INTENDED TO PROVIDE LEGAL  
DIMENSIONS OR LOCATIONS OF PROPERTY OWNERSHIP LINES.