

RECEIVED

OCT 11 2022

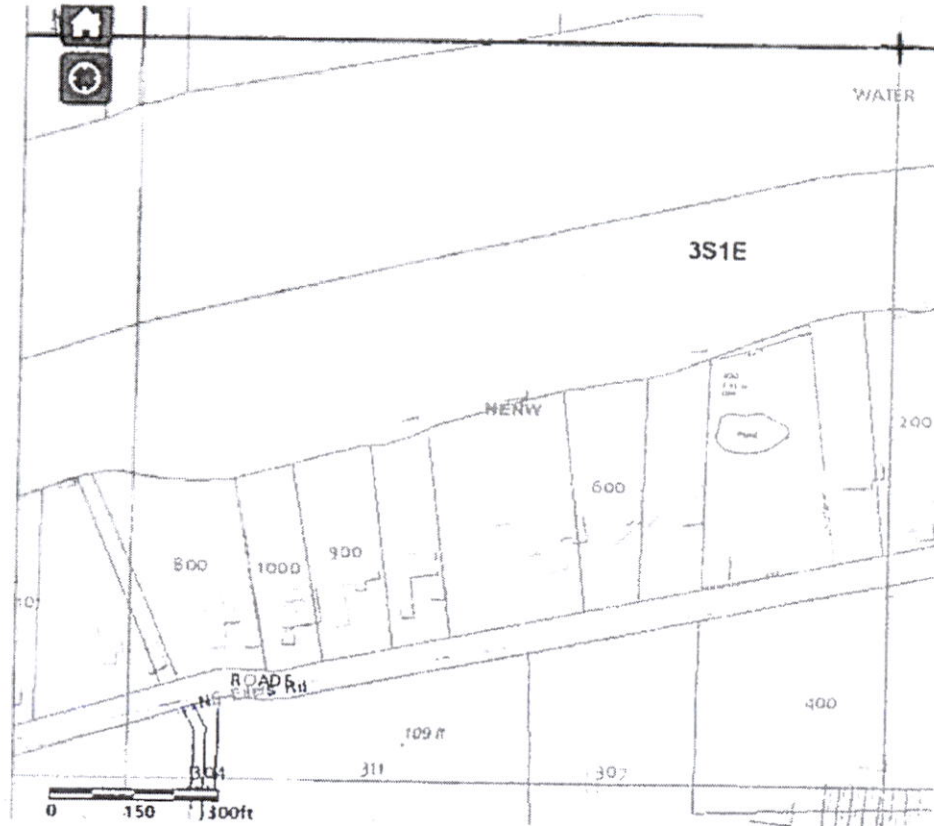
OWRD

RECEIVED BY OWRD

JUN 13 2016

SALEM, OR

T 3 S. R 1 E. Section 19 Tax Lot 400



Scale 1" = 300'

RECEIVED BY OWRD

OCT 19 2015

SALEM, OR

Center of pond located 750' South and 240'
East from the North 1/4 corner of Section 19
West

JB
9-28-16

This map was prepared with the assistance of C.S.G. and is based on information provided by the applicant and by records of the county. This is to represent the location of a water right requested in this application and does not intend to illustrate property boundaries or ownership.

R-00245