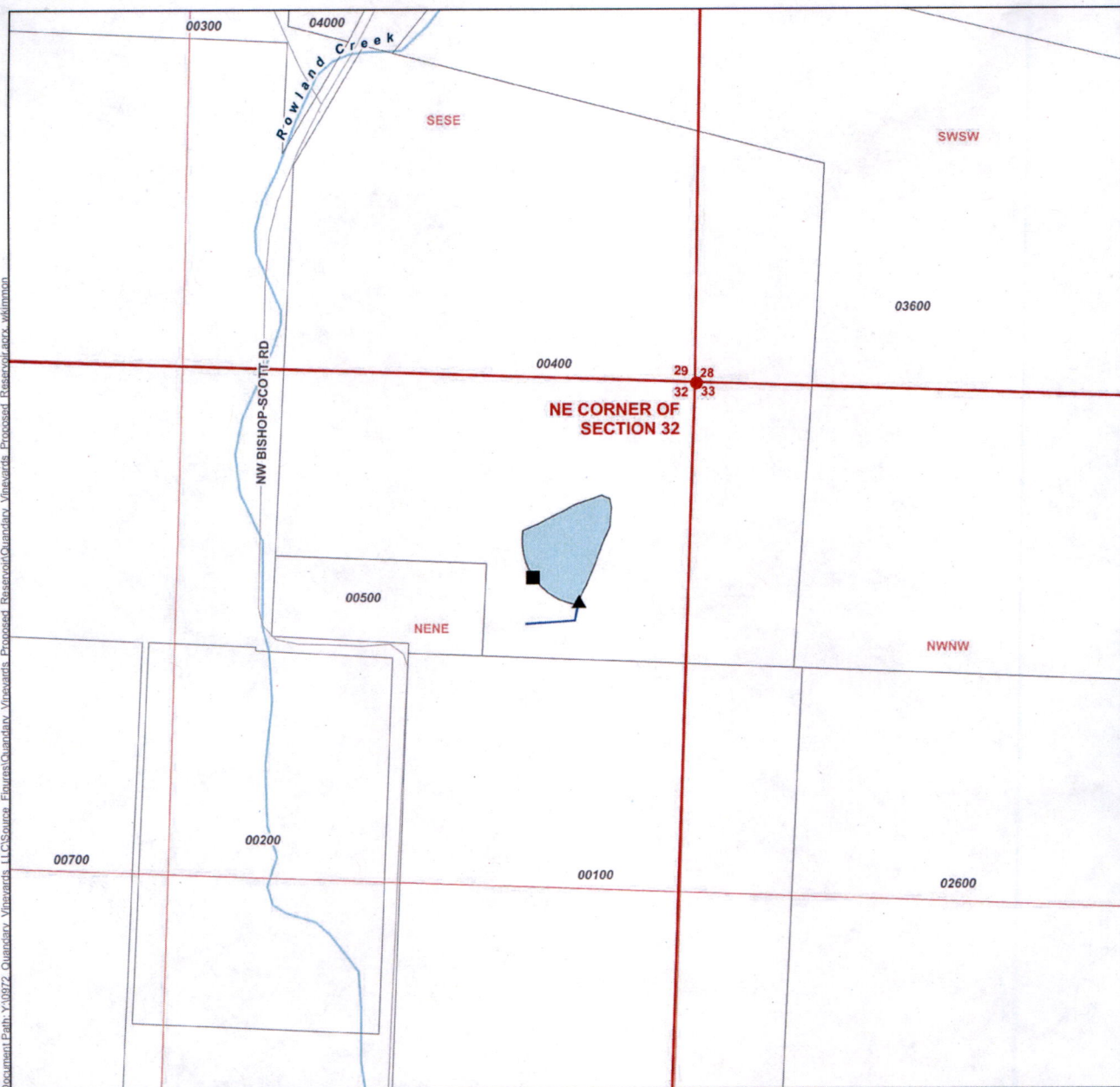


DocumentPath: Y:\0972_Quandary_Vineyards_LLC\Source_Features\Quandary_Vineyards_Proposed_Reservoir.aprx, wtkimmon



- LEGEND**
- Proposed Reservoir
 - Dam
 - Outlet Structure
 - Outlet Pipe
 - Tax Lot
 - Watercourse

Alternate Reservoir Application
Quandary Vineyards LLC
 Township 2 South, Range 4 West (W.M.)
 Yamhill County

LOCATION DESCRIPTION
Proposed Reservoir
 Located 450 feet South and 330 feet West from the NE corner of Section 32, Township 2 South, Range 4 West (W.M.)
Dam
 Located 510 feet South and 405 feet West from the NE corner of Section 32, Township 2 South, Range 4 West(W.M.)

RECEIVED
OCT 14 2022
OWRD

DISCLAIMER
 This map was prepared for the purpose of identifying the location of a water right only and it is not intended to provide legal dimensions or location of property ownership lines.

Date: August 25, 2022
 Data Sources: BLM, ESRI, OWRD, USGS

