

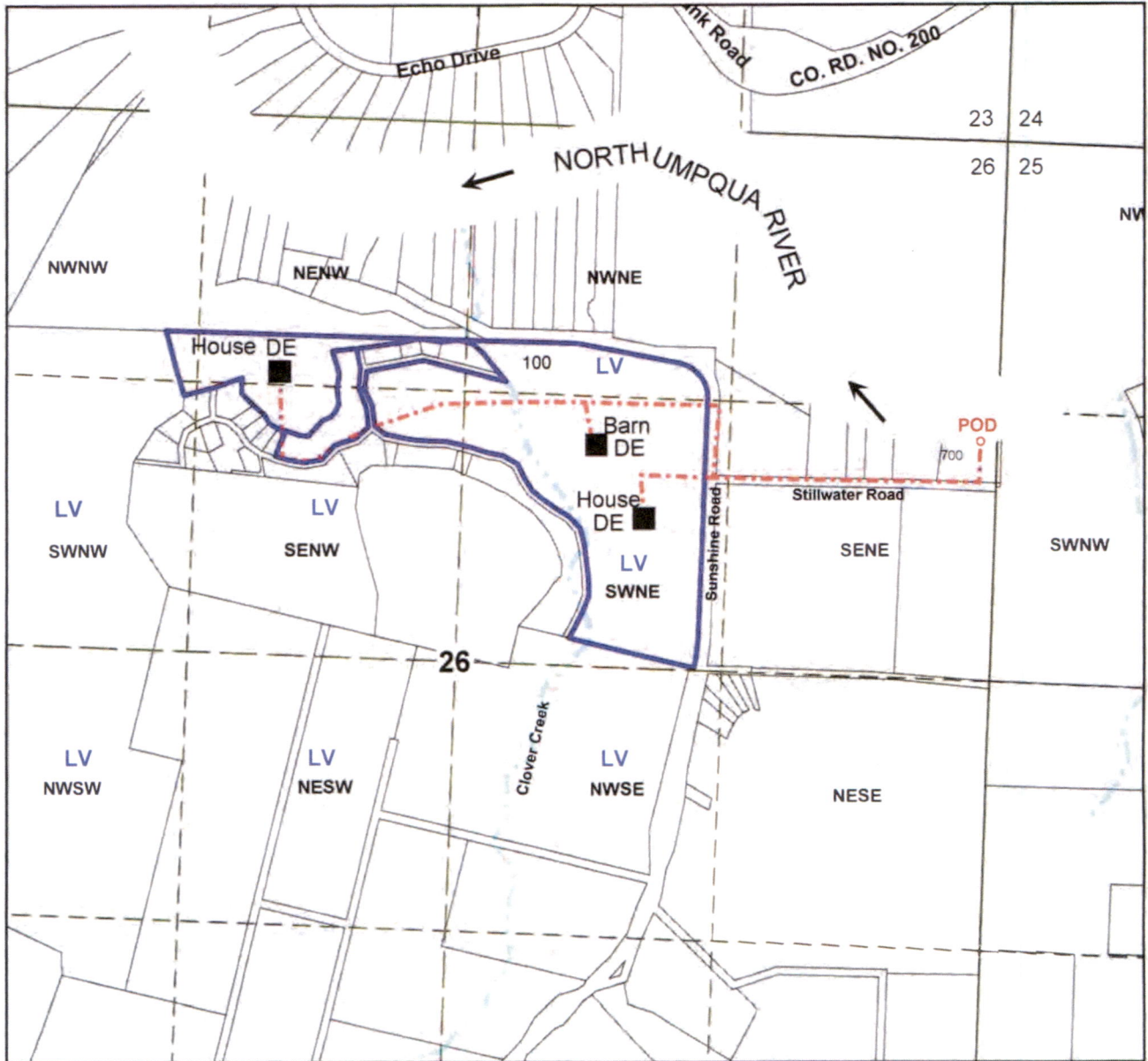
Surface Water Application Map

Kahn

T.26s R.5w Section 26

Douglas County

Scale: 1"=800'



LV = Livestock watering in this quarter-quarter section

DE = Domestic Expanded

North Umpqua River POD: 1475 ft South and 100 ft West from the NE Corner of Section 26

See attached tax assessor maps for complete tax lot information

This map prepared with assistance from Mary Burleson, Assistant Watermaster, District 15

RECEIVED

OCT 17 2022

OWRD

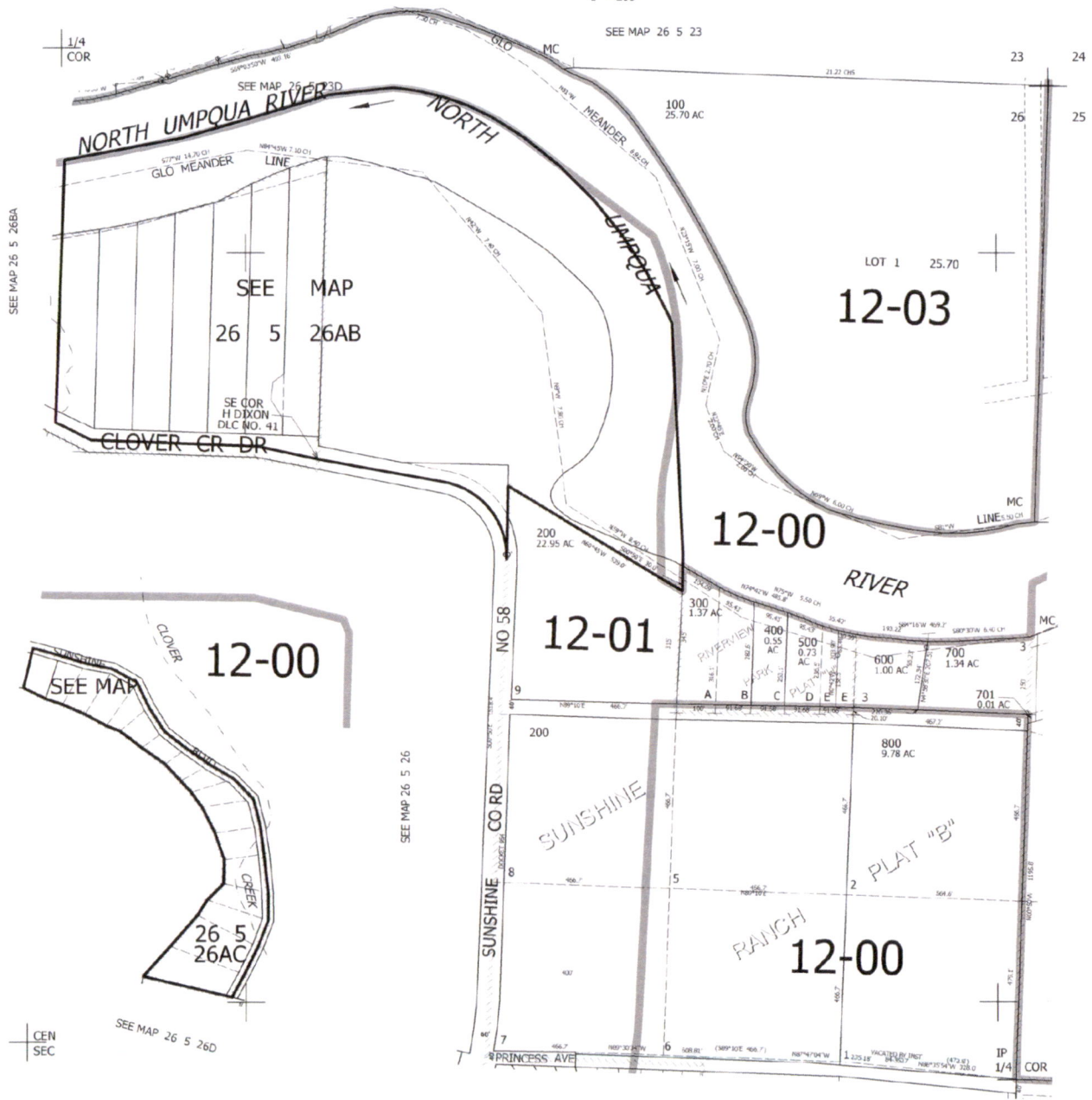
The purpose of this map is to identify
the location of a water right.
Not intended to show property ownership.

THIS MAP WAS PREPARED FOR ASSESSMENT PURPOSE ONLY.

NE1/4 SEC.26 T.26S. R.5W. W.M.
DOUGLAS COUNTY
1" = 200'

REVISED ON
1-14-02

26 5 26A
& INDEX



CANCELLED NO'S

SEE MAP 26 5 25

600,000

SEE MAP 26 5 26DA

4-190,000

26 5 26A
& INDEX

RECEIVED
OCT 17 2022
OWRD

THIS MAP WAS PREPARED FOR
ASSESSMENT PURPOSE ONLY.

SW1/4 SEC.26 T.26S. R.5W. W.M.
DOUGLAS COUNTY

1" = 200'

REVISED ON

26 5 26C

1/4
COR

CEN
SEC

CANCELLED NO'S

SEE MAP 26 5 26

SEE MAP 26 5 26D

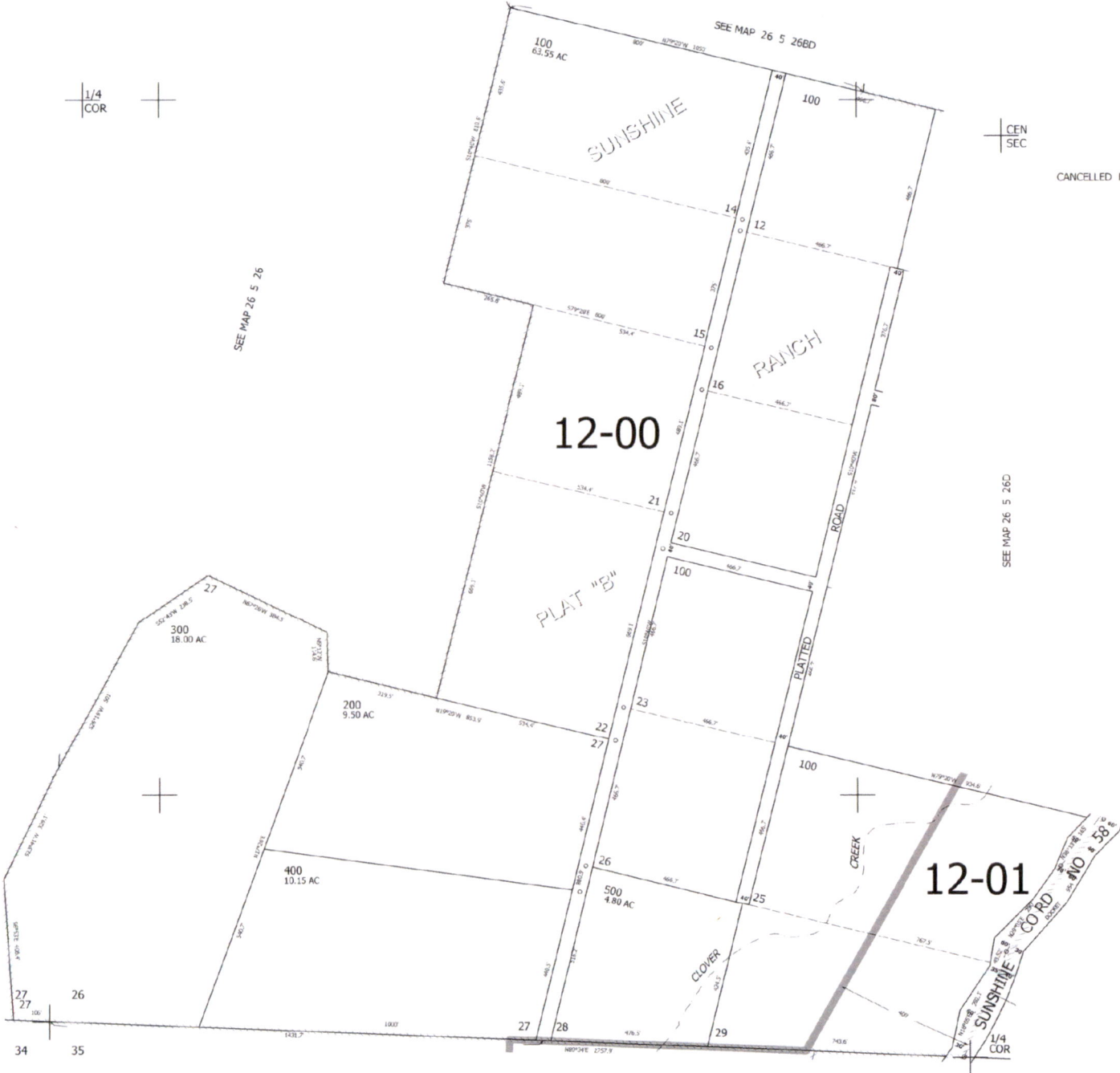
SEE MAP 26 5 27

598,000

4,187,000

SEE MAP 26 5 35

26 5 26C



RECEIVED
OCT 17 2022
OWRD

THIS MAP WAS PREPARED FOR ASSESSMENT PURPOSE ONLY.

SE1/4 NW1/4 SEC.26 T.26S. R.5W. W.M.
DOUGLAS COUNTY

REVISED ON

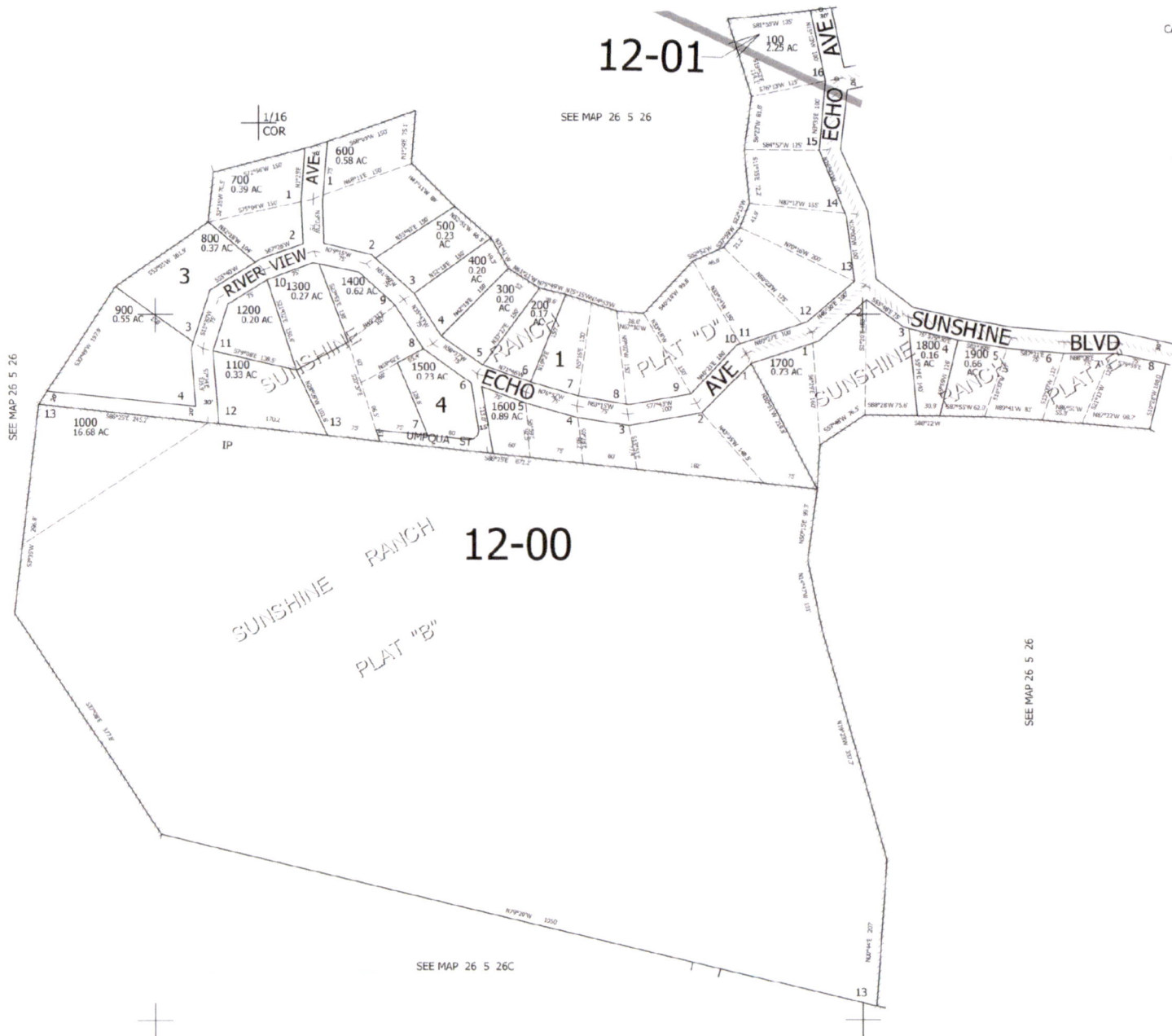
26 5 26BD

1" = 100'

CANCELLED NO'S

12-01

SEE MAP 26 5 26



1/16 COR

SEE MAP 26 5 26AC

12-00

SEE MAP 26 5 26

SEE MAP 26 5 26C

600,000

1/16 COR

CEN
SEC

26 5 26BD

4,187,000

RECEIVED

OCT 17 2022

OWRD

THIS MAP WAS PREPARED FOR ASSESSMENT PURPOSE ONLY.

NE1/4 NW1/4 SEC.26 T.26S. R.5W. W.M.
DOUGLAS COUNTY
1" = 100'

REVISED ON

26 5 26BA

1/16
COR

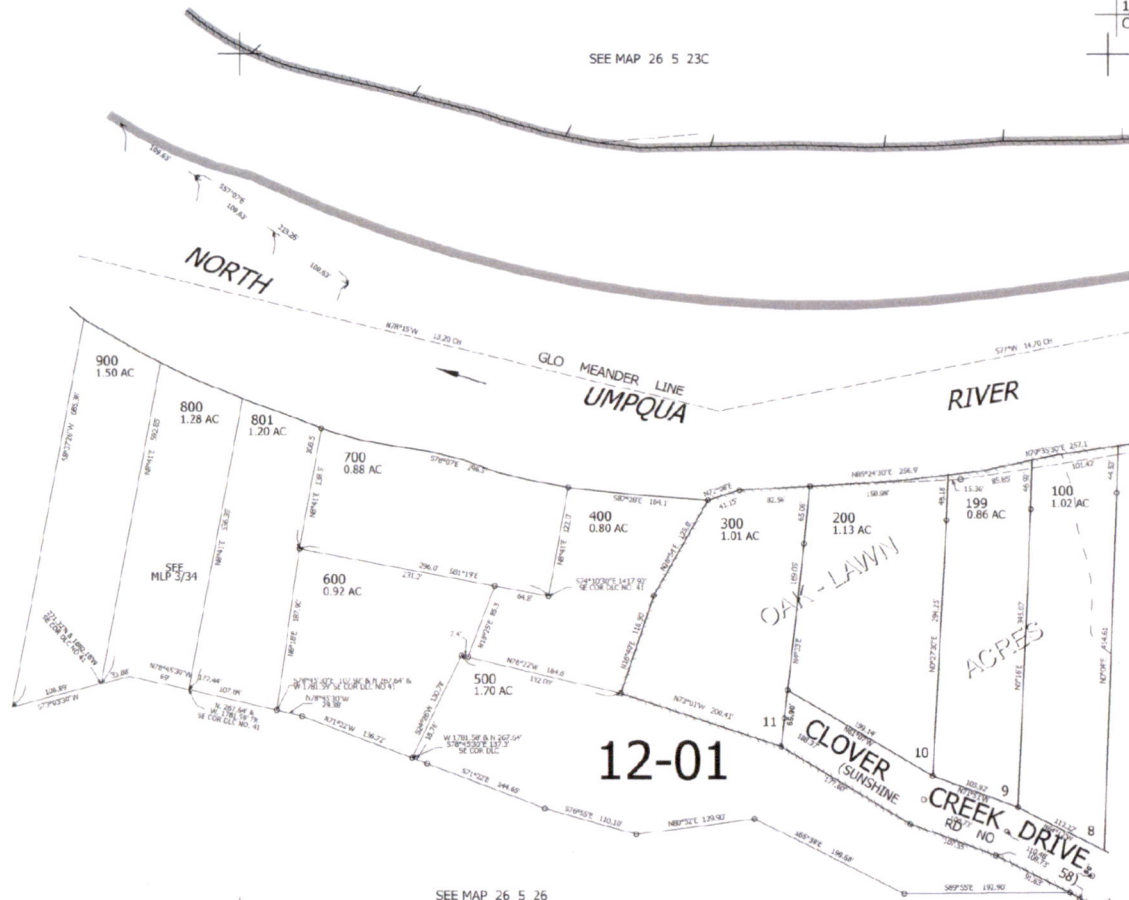
1/4
COR

SEE MAP 26 5 23C

CANCELLED NOS

SEE MAP 26 5 26

SEE MAP 26 5 26AB

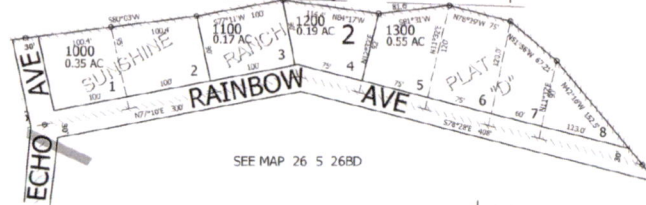


12-01

SEE MAP 26 5 26

S/L HIRAM DIXON DLC NO 41

601,500



SEE MAP 26 5 26BD

1/16
COR

005,187,500

26 5 26BA

RECEIVED
OCT 17 2022
OWRPD

THIS MAP WAS PREPARED FOR ASSESSMENT PURPOSE ONLY.

SW1/4 NE1/4 SEC.26 T.26S. R.5W. W.M.
DOUGLAS COUNTY
1" = 100'

REVISED ON

26 5 26AC

1/16
COR

1/16
COR

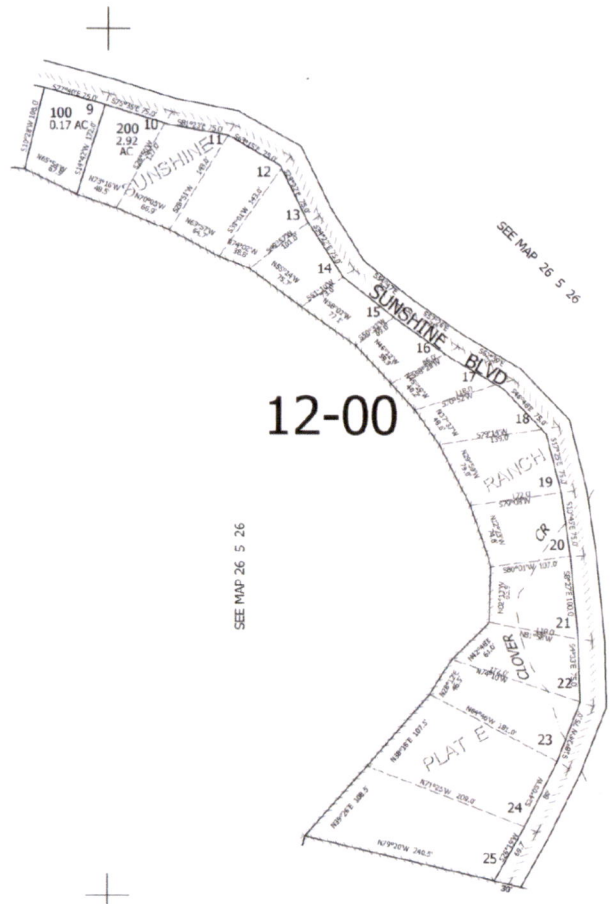
CANCELLED NO'S

SEE MAP 26 5 26BD

SEE MAP 26 5 26

SEE MAP 26 5 26

SEE MAP 26 5 26D



12-00

600,000

CEN
SEC

1/16
COR

26 5 26AC

4,185,500

RECEIVED
OCT 17 2022
OWRD

SEC.26 T.26S. R.5W. W.M.
DOUGLAS COUNTY

1" = 400'

SEE MAP 26 5 23

SEE MAP 26 5 23C

SEE MAP 26 5 23D

SEE MAP 26 5 23

SEE MAP 26 5 25

CANCELLED NOS
301

SEE MAP 26 5 25

SEE MAP 26 5 25C

598,000

4,189,000

SEE MAP 26 5 35

THIS MAP WAS PREPARED FOR
ASSESSMENT PURPOSE ONLY.

- CL PRIVATE RD
1. S2°27'E 74.4'
 2. N85°54'E 142.75'
 3. S56°02'30"E 123.65'
 4. S86°28'E 137.66'
 5. S13°02'30"E 137.66'
 6. S7°58'E 89.68'
 7. S64°48'30"E 91.04'
 8. S10°16'E 90.23'
 9. S77°02'E 100.07'
 10. S57°02'E 100.07'
 11. S29°05'30"E 114.84'
 12. S10°33'30"E 107.26'
 13. S10°33'30"E 107.26'
 14. N70°21'E 100.05'
 15. N51°52'30"E 123.35'

PORTION OF
26 5 26AC, BA, & BD
BOUNDARY

1. S30°49'W 147.9'
2. S53°05'W 161.9'
3. S23°5'W 70.5'
4. S56°02'30"E 123.65'
5. S48°09'W 150'
6. N1°29'E 75.1'
7. N47°11'W 89'
8. N31°41'W 96.3'
9. N31°41'W 96.3'
10. N61°21'W 52'
11. N79°49'W 38.6'
12. N74°43'W 38.6'
13. N74°43'W 38.6'
14. N87°30'W 38.6'
15. S40°18'W 99.9'
16. S11°52'W 31.2'
17. S31°59'W 31.2'
18. S22°15'W 41.9'
19. S11°35'E 72.2'
20. S11°35'E 72.2'
21. S19°52'E 114.1'
22. S81°55'W 135'
23. S80°03'W 100.4'
24. S77°11'W 100.4'
25. S77°11'W 100.4'
26. N84°17'W 114.4'
27. S81°31'W 81.6'
28. N57°56'W 67.2'
29. N57°56'W 67.2'
30. N42°16'W 152.5'
31. S78°28'E 408'
32. N1°29'E 75.1'
33. N79°49'W 38.6'
34. N26°43'W 100'
35. N10°W 100'
36. S79°50'E 75'
37. S79°50'E 75'
38. S82°39'E 75'
39. S87°21'E 75'
40. S95°58'E 75'
41. S95°58'E 75'
42. S77°40'E 75'
43. S79°35'E 75'
44. S81°13'E 75'
45. S81°13'E 75'
46. S59°02'E 75'
47. S34°22'E 75'
48. S54°47'E 75'
49. S62°39'E 75'
50. S62°39'E 75'
51. S46°48'E 75'
52. S17°25'E 75'
53. S17°25'E 75'
54. S85°27'E 100'
55. S4°33'E 75'
56. S18°24'W 75'
57. S18°24'W 75'
58. S26°19'W 69.7'
59. N39°26'E 108.5'
60. S38°18'E 107.5'
61. S38°18'E 107.5'
62. N42°48'E 81'
63. N42°13'W 63.9'
64. N22°23'W 74.8'
65. N22°23'W 74.8'
66. N37°37'W 48.6'
67. N45°19'W 40.2'
68. N46°12'W 59.9'
69. N46°12'W 59.9'
70. N55°24'W 75.7'
71. N74°02'W 38.8'
72. N63°57'W 64.7'
73. N73°16'W 64.5'
74. N73°16'W 64.5'
75. N65°54'W 67.9'
76. N87°22'W 98.7'
77. N89°41'W 83.6'
78. N89°41'W 83.6'
79. S87°55'W 62.9'
80. S88°22'W 30.9'
81. S85°48'W 75.6'
82. S85°48'W 75.6'
83. S97°51'E 64.6'

SEE MAP 26 5 27

RECEIVED
OCT 17 2022
OWRD

