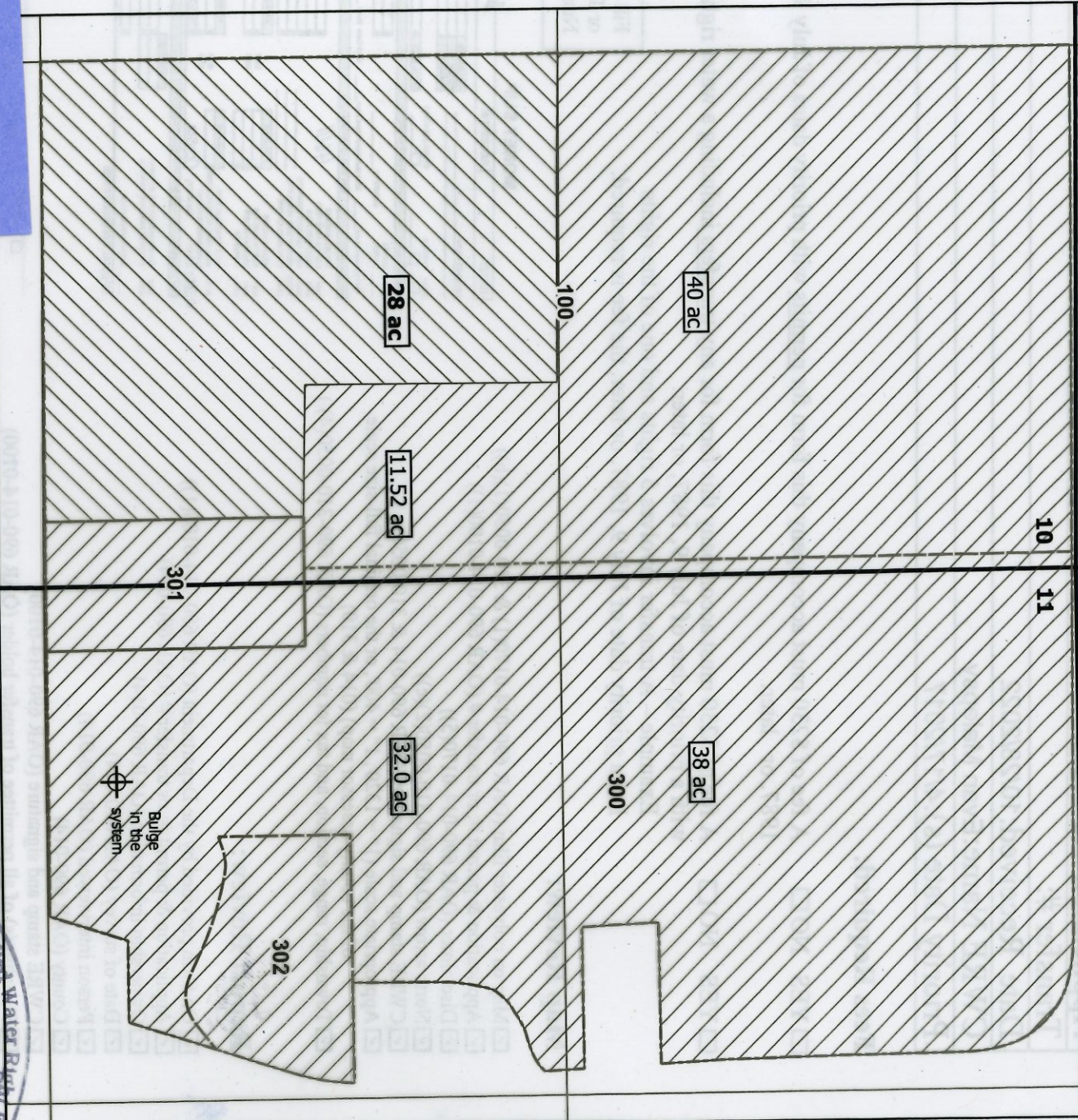


T9S R39E WM



Notes:
 Well 1 (L-138188): 180' North and 510' East from the western ¼ corner of Section 11
 This map is not intended to provide legal dimensions or locations of property ownership lines.
 Flow measurement device located within a 5 foot radius of Well 1

RECEIVED
 OCT 28 2022
 OWRD

Lim of Beneficial Use Map
 8 Washington Gulch Road
 Application G-17960, Transfer T-13328
 Baker County, OR







Date: 10/18/22
 Drawn by: Paul F. Garvin

Prepared on behalf of Stuart and Megan Hills

1 inch = 400 feet



LEGEND

-  WELL 1 (L-138188)
-  T-13328 POU - Irrigation (28 ac total)
-  T-13328 POU - Supplemental Irrigation (121.52 ac total)
-  Baker County Taxlot Boundary **300**

