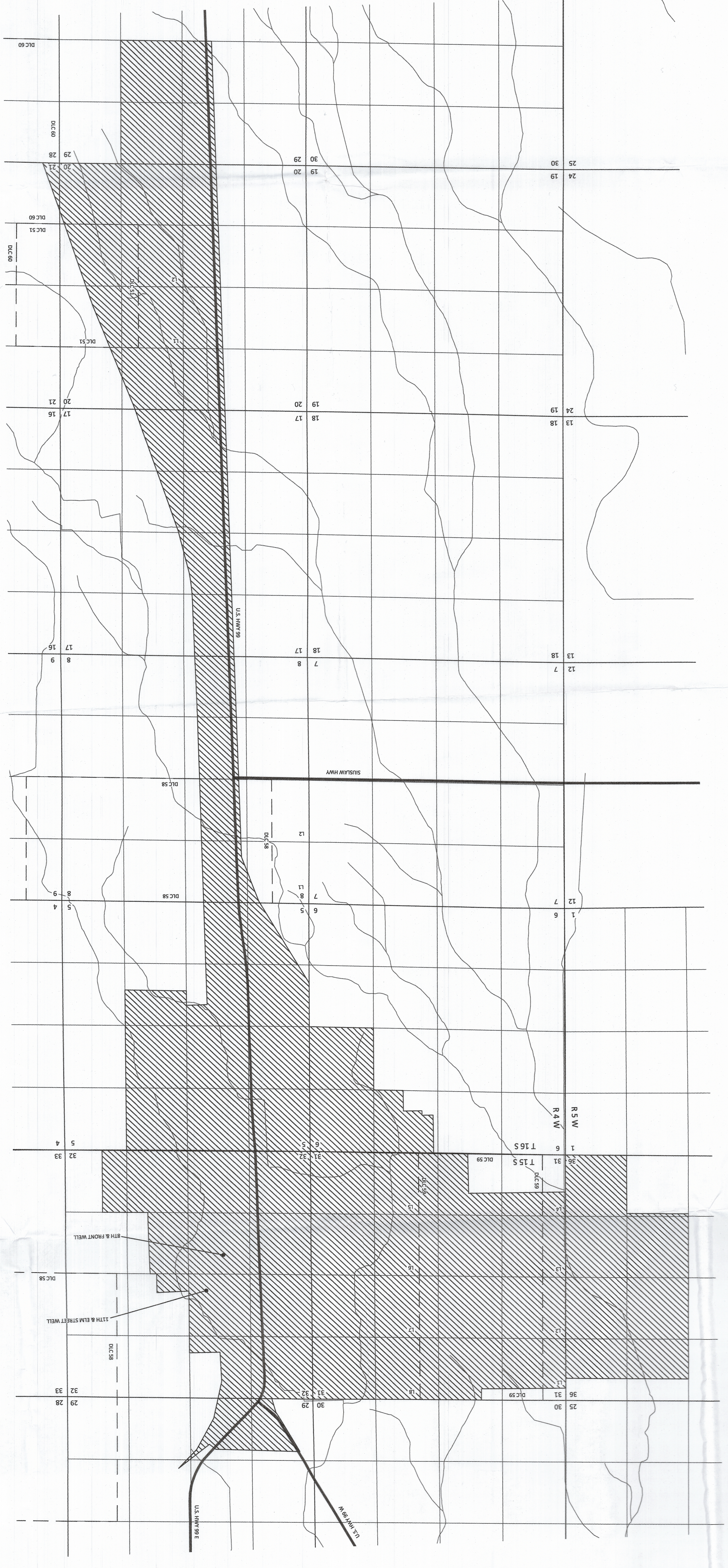


Sections 29, 30, 31 & 32, T15S, R5W, W.M., and
 Section 36, T15S, R5W, W.M., and
 Sections 5, 6, 8, 17, 20, 21 & 29, T16S, R4W, W.M., Lane County
 Transfer T-12523
 CLAIM OF BENEFICIAL USE MAP
 City of Junction City



11TH & ELM STREET WELL LOCATION:
 3140 FT N AND 2930 FT W FROM
 SE CORNER OF SECTION 32, T15S, R4W, W.M.

8TH & FRONT STREET WELL LOCATION:
 2390 FT N AND 330 FT W FROM
 SE CORNER OF SECTION 32, T15S, R4W, W.M.

EXPLANATION

▨ T-12523 PLACE OF USE
 MUNICIPAL USE
 PRIORITY: 1/17/1992

● POINT OF DIVERSION (POD)

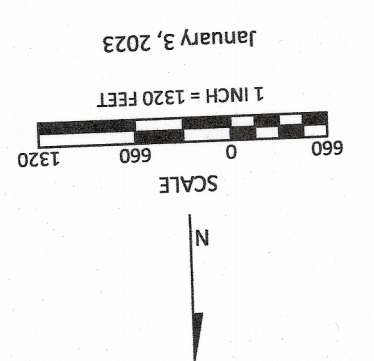
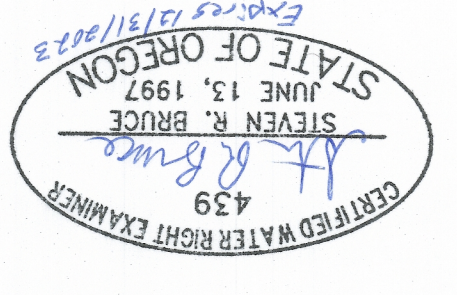


FIGURE 1
 This map is not intended to provide legal
 dimensions or locations of property
 ownership lines

January 3, 2023

Site Inspection Conducted
 12/21/2022



RECEIVED
 JAN 11 2023
 SALEM, OREGON