

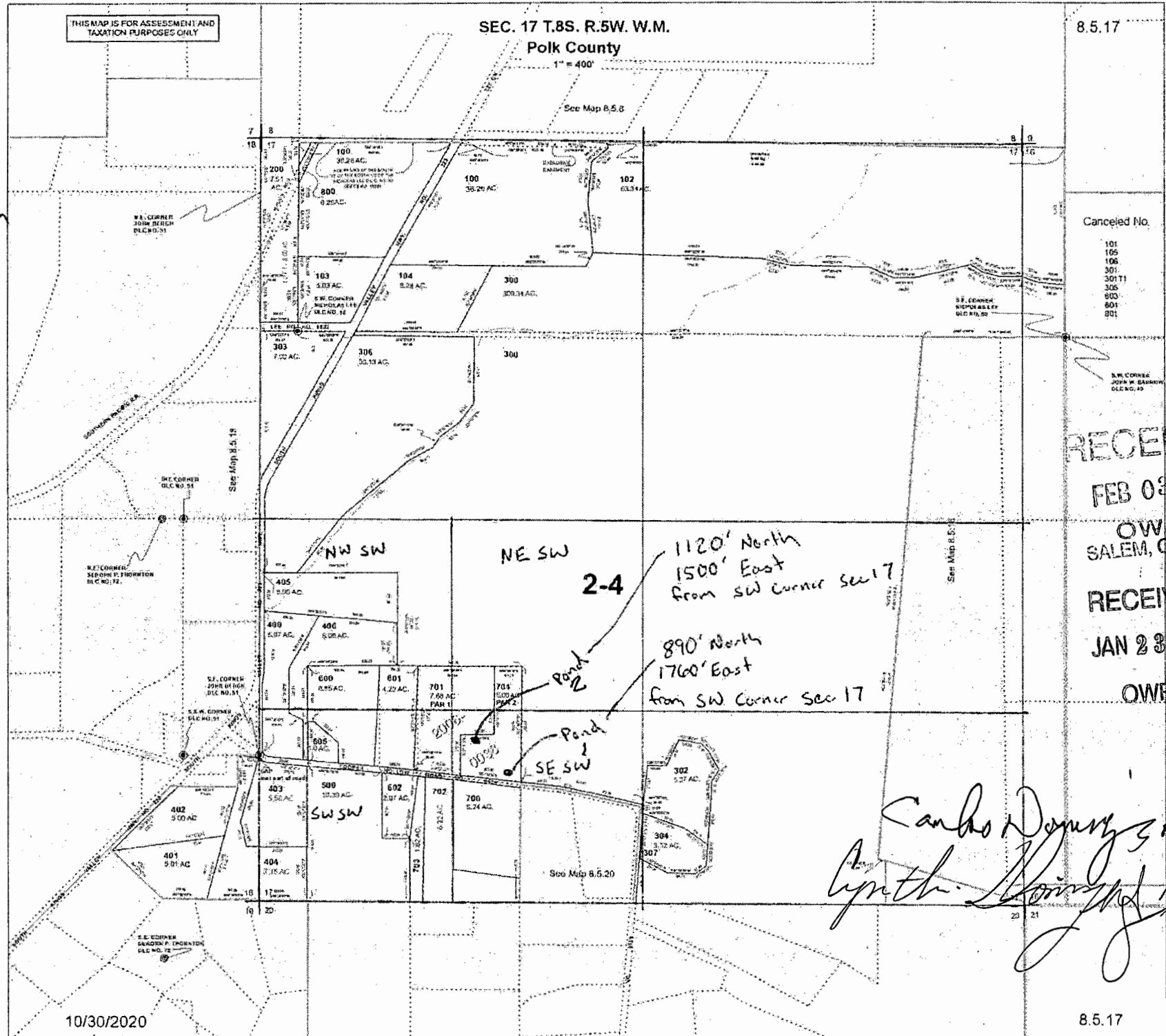
THIS MAP IS FOR ASSESSMENT AND TAXATION PURPOSES ONLY

SEC. 17 T.8S. R.5W. W.M.  
Polk County

8.5.17

1" = 400'

See Map 8.5.8



Canceled No.

- 101
- 105
- 106
- 301
- 301T1
- 305
- 600
- 601
- 601

RECEIVED

FEB 03 2023

OWRD  
SALEM, OREGON

RECEIVED

JAN 23 2023

OWRD

2-4

1120' North  
1500' East  
from SW corner sec 17

890' North  
1760' East  
from SW corner sec 17

Pond 2

Pond 1

SE SW

*Carla D. Dwyer 3-19-2023*  
*Lyneth Dwyer 1/19/202*

10/30/2020

8.5.17