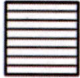





TYLER ROLEN
 RSF ENTERPRISES LLC
 4635 THOMPSON CREEK RD
 JACKSONVILLE, OR 97530

SITUATED IN
 SECTION 8, TOWNSHIP 39 S,
 RANGE 4 W
 JACKSON COUNTY OREGON

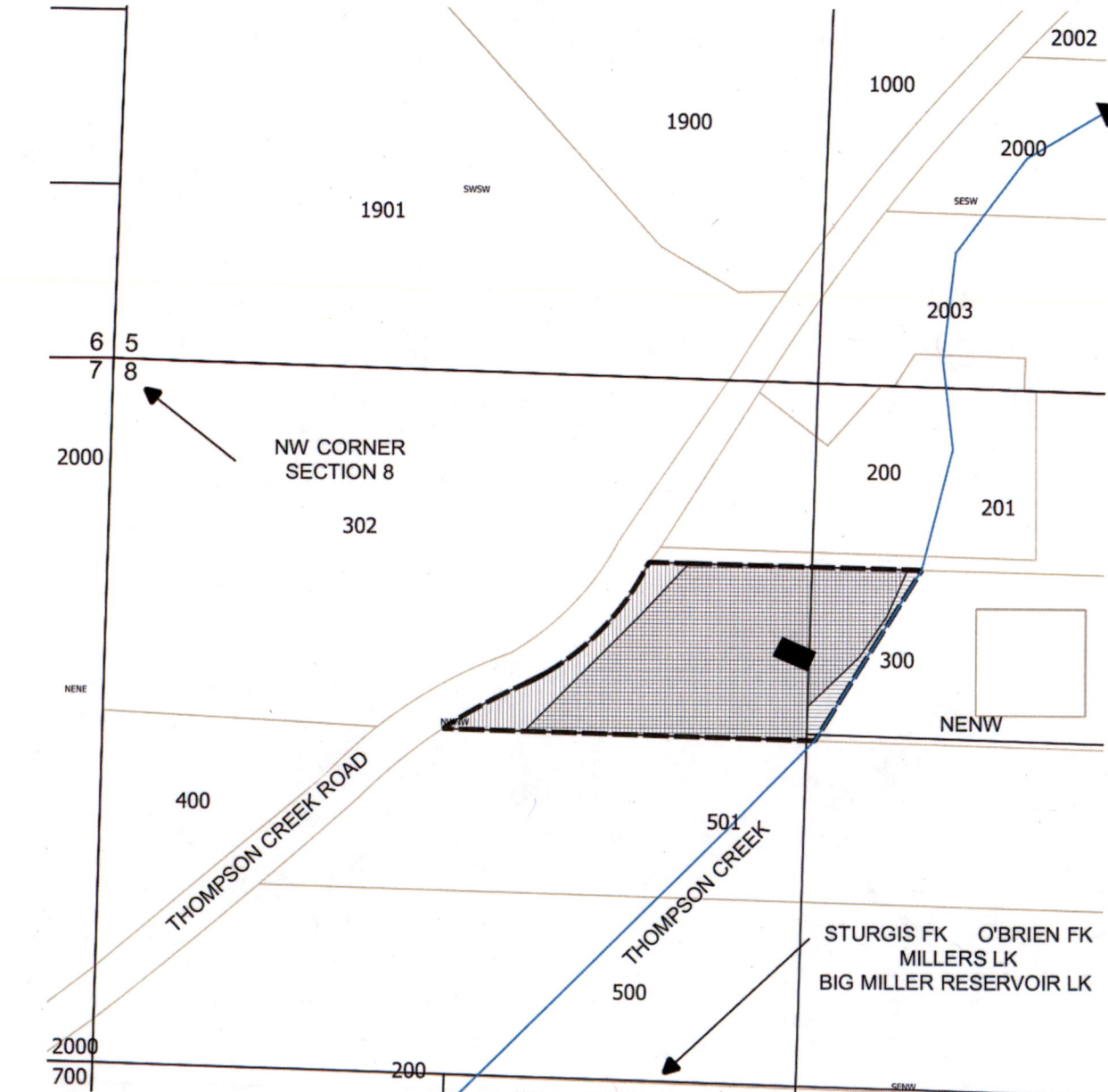
LEGEND

-  C-16465 / C-32984 PRIMARY IRRIGATION
 3.60 ACS
 0.82 ACS NE NW
 2.78 ACS NW NW
-  C-93252 / C-93253 / C-932453
 SUPPLEMENTAL IRRIGATION
 3.97 ACS
 0.64 ACS NE NW
 3.33 ACS NW NW
-  R-15534 SOURCE
 RESERVOIR CENTROID
 505' S 1280' E NW CORNER SECTION 8
-  R-15534 SECONDARY PERMIT
 SUPPLEMENTAL IRRIGATION (MAY-SEP)
 PRIMARY NURSERY (JAN-DEC)
 4.15 ACS
 0.82 ACS NE NW
 3.33 ACS NW NW

RECEIVED

MAR 03 2023

OWRD



This map is not intended to provide
 legal dimensions or locations of
 property ownership lines

ParsonsWater Consulting LLC
 rick.parsons@parsonwater.com
 541.499.0257 303.667.5067