

RECEIVED

MAR 08 2023

OWRD
SALEM, OREGON

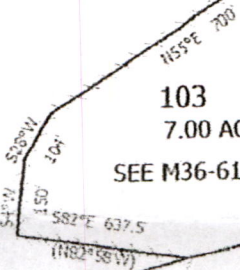
NE COR
J TIBBITS
DLC NO. 40

NW C
DLC

1-00

103
7.00 AC

SEE M36-61



CALAPOOIA

100
116.1

201

202

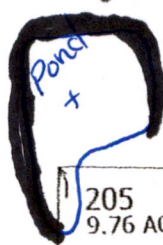
T245-R054-534-SE SW

North ↑

1.

1-11

← Dam Area



800' North and
775' West from
The SE Corner
of DLC 40

203
6.43 AC

205
9.76 AC

Reference
Corner

SE COR
DLC 40

SW
WM O
DLC

400
AC
CENTER CORNER
BY DEED

DRIVER

R
ETTS
. 40

72 RODS - 1183
77 RODS = 1183

NW COR

NE COR

NW COR

1" = 400'