

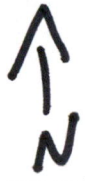
THIS MAP WAS PREPARED FOR ASSESSMENT PURPOSE ONLY.

SEC.19 T.28S. R.6W. W.M.
DOUGLAS COUNTY

REVISED ON
11-19-15

28 6 19

1" = 400'



CANCELLED NO'S
2002 1900 2003
2101 2100 2700
2601 2103 2400
2600 2501 401
2102 2004

1.25 acres SWNE
T28/R6W/19

.75 acres SWNW
T28S/R6W/20

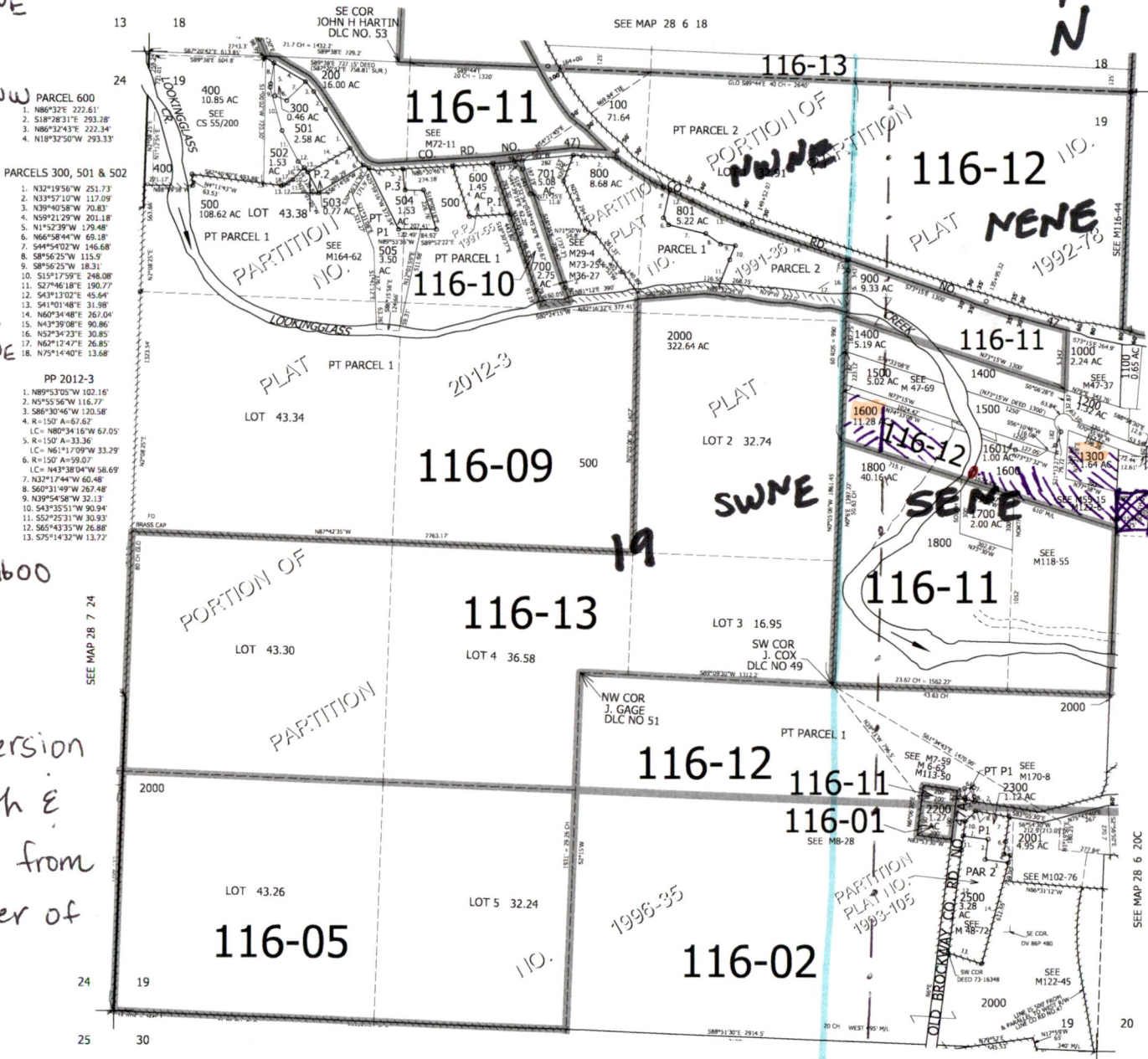
8 acres SENE
T28S/R6W/19

QA line between
SWNE/SENE

Parcel 1 1300,1600

DLC#49

Point of Diversion
is: 480 ft North E
820 ft West from
East 1/4 Corner of
Section 19



PARCEL 600
1. N86°32'E 222.61'
2. S18°28'31"E 293.28'
3. N86°32'43"E 222.34'
4. N18°32'50"W 293.33'

PARCELS 300, 501 & 502
1. N32°19'56"W 251.73'
2. N33°57'10"W 117.09'
3. N39°40'58"W 70.83'
4. N59°21'29"W 201.18'
5. N1°52'39"W 179.48'
6. N64°58'44"W 69.18'
7. S44°54'02"W 146.68'
8. S8°56'25"W 115.9'
9. S8°56'25"W 18.31'
10. S15°17'59"E 248.08'
11. S2°46'18"E 190.77'
12. S43°13'02"E 45.64'
13. S41°01'48"E 31.98'
14. N60°34'48"E 267.04'
15. N43°39'08"E 90.86'
16. N52°34'23"E 30.85'
17. N0°12'47"E 26.85'
18. N75°14'40"E 13.68'

PP 2012-3
1. N89°53'05"W 102.16'
2. N9°55'36"W 116.77'
3. S86°30'46"W 120.58'
4. R=150' A=67.62'
LC= N80°34'16"W 67.05'
5. R=150' A=33.36'
LC= N61°17'09"W 33.29'
6. R=150' A=59.07'
LC= N43°38'04"W 58.69'
7. N21°17'44"W 60.48'
8. S60°31'49"W 267.48'
9. N39°54'58"W 32.13'
10. S43°35'51"W 90.94'
11. S52°25'31"W 30.93'
12. S65°43'35"W 26.88'
13. S75°14'32"W 13.72'

RECEIVED
APR 24 2023
OWRD

PP 1991-36
1. S86°25'E 54.4'
2. S87°45'E 82.22'
3. LC=S58°54'58"E 303.91'
4. S64°48'43"E 38.63'
5. S11°52'26"W 154.29'
6. S36°53'49"E 48.28'
7. S77°42'09"E 208.44'
8. S55°29'53"E 100.73'
9. S83°36'59"E 81.45'
10. S20°56'21"W 83.76'
11. S20°56'21"W 158.53'
12. S64°48'43"E 237.18'
13. LC=S68°34'17"E 249.82'
14. S72°15'16"E 530.16'
15. S1°08'07"E 47.24'
16. S1°08'07"E 41.12'
17. S57°W 117.76'

PP 1993-105
1. S85°10'22"E 135.53'
2. S8°17'44"W 112.03'
3. S83°08'13"E 139.5'
4. N13°53'31"E 40'
5. N83°31'17"W 41.54'
6. N6°53'10"E 73.61'
7. N6°53'10"E 139.19'
8. N83°06'04"W 190.04'
9. S4°35'27"W 71.02'
10. N6°09'03"E 91.62'
11. N6°09'03"E 71.03'
12. S6°W 571.2'
13. S73°18'37"E 195.45'
14. N13°53'31"E 572.65'

TAXLOT 2300
(N. OF ROAD)
1. N6°52'54"E 60'
2. N83°07'06"W 197.71'
3. N83°07'06"W 51.37'
4. N6°56'55"W 11.82'
5. N6°56'55"W 49.84'
6. N82°49'01"E 49.88'
7. S64°55'E 49.84'
8. S6°56'55"E 24.3'

SEE MAP 28 6 30

SEE MAP 28 6 20C

4,136,000

540,500

28 6 19