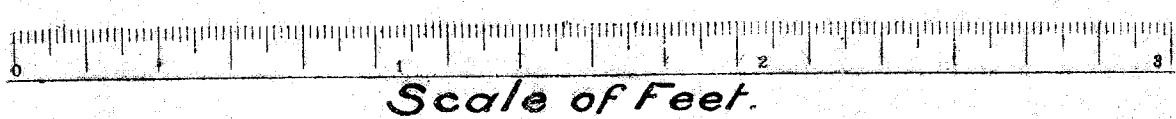
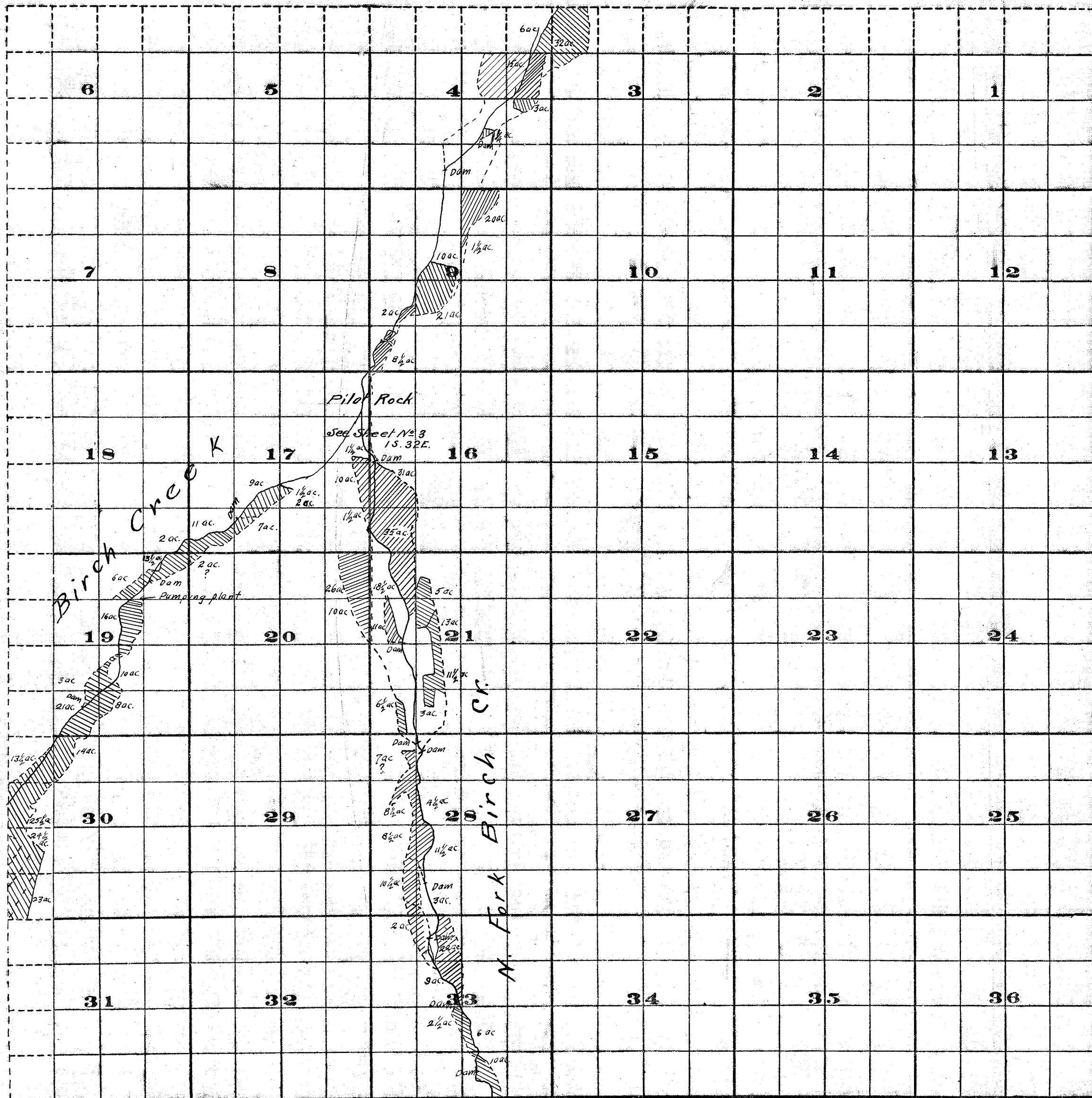


Township 15, Range 32 E. W. M.



FROM OFFICE OF THE STATE ENGINEER, SALEM, OREGON

Adjudication - Umatilla River - Tributaries

Survey by Rhea Luper, Sept. 1909.

John H. Lewis - State Eng'r. Examined May 9, 1910.

15.32 E. Sheet No. 1.