

RECEIVED

MAY 22 2023

OWRD  
SALEM, OREGON

THIS MAP WAS PREPARED FOR  
ASSESSMENT PURPOSE ONLY

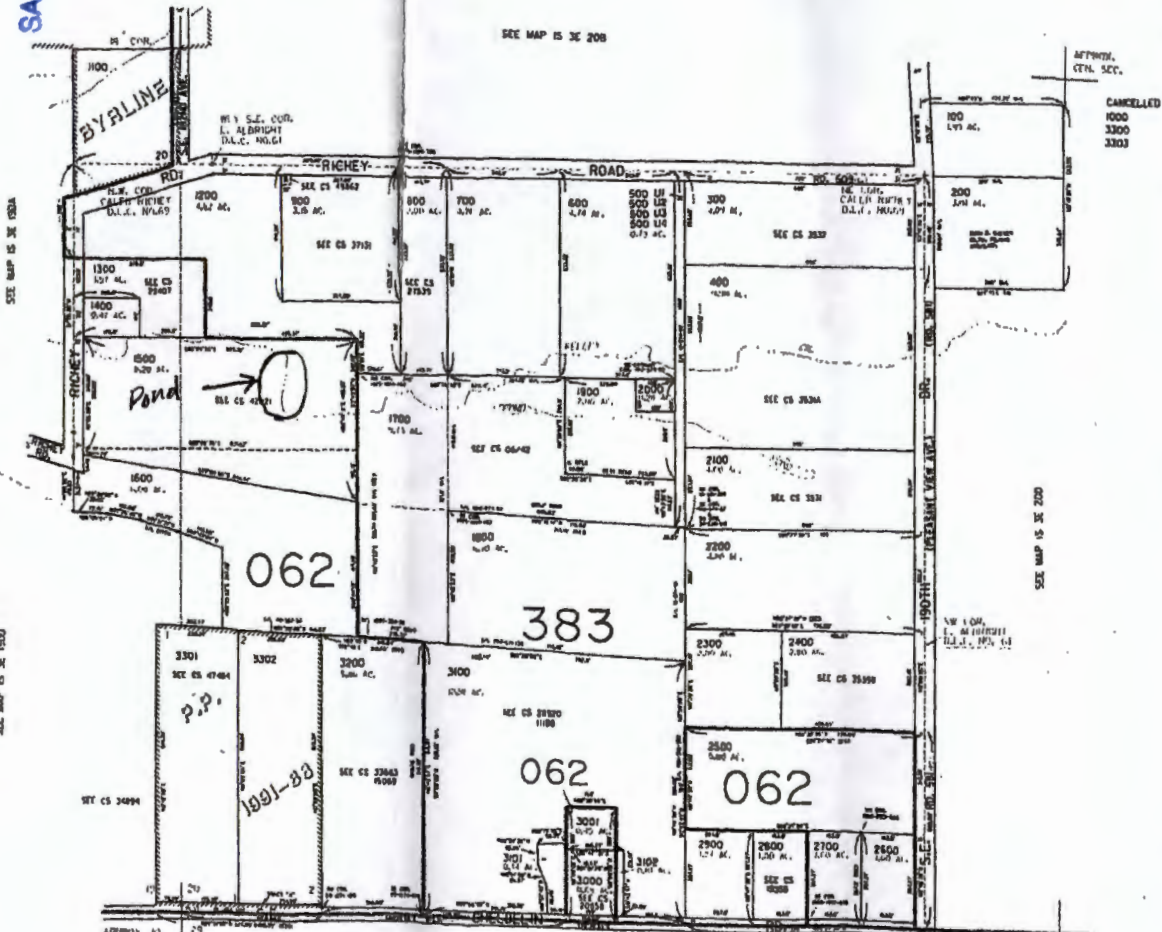
SEE MAP IS 3E 20B

IS 3E 20C

Bradshaw -Alt  
Res  
Permit R-14363

T1S/R3E-20  
SW 1/4

Scale 1"=500'



062

383

062

062

CLACKAMAS COUNTY

IS 3E 20C



CANCELLED NO.  
1000  
3300  
3303

SEE MAP IS 3E 20B

SEE MAP IS 3E 192A

SEE MAP IS 3E 192D

SEE MAP IS 3E 192A

APPROX. 30

SEE MAP IS 3E 20B