
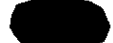


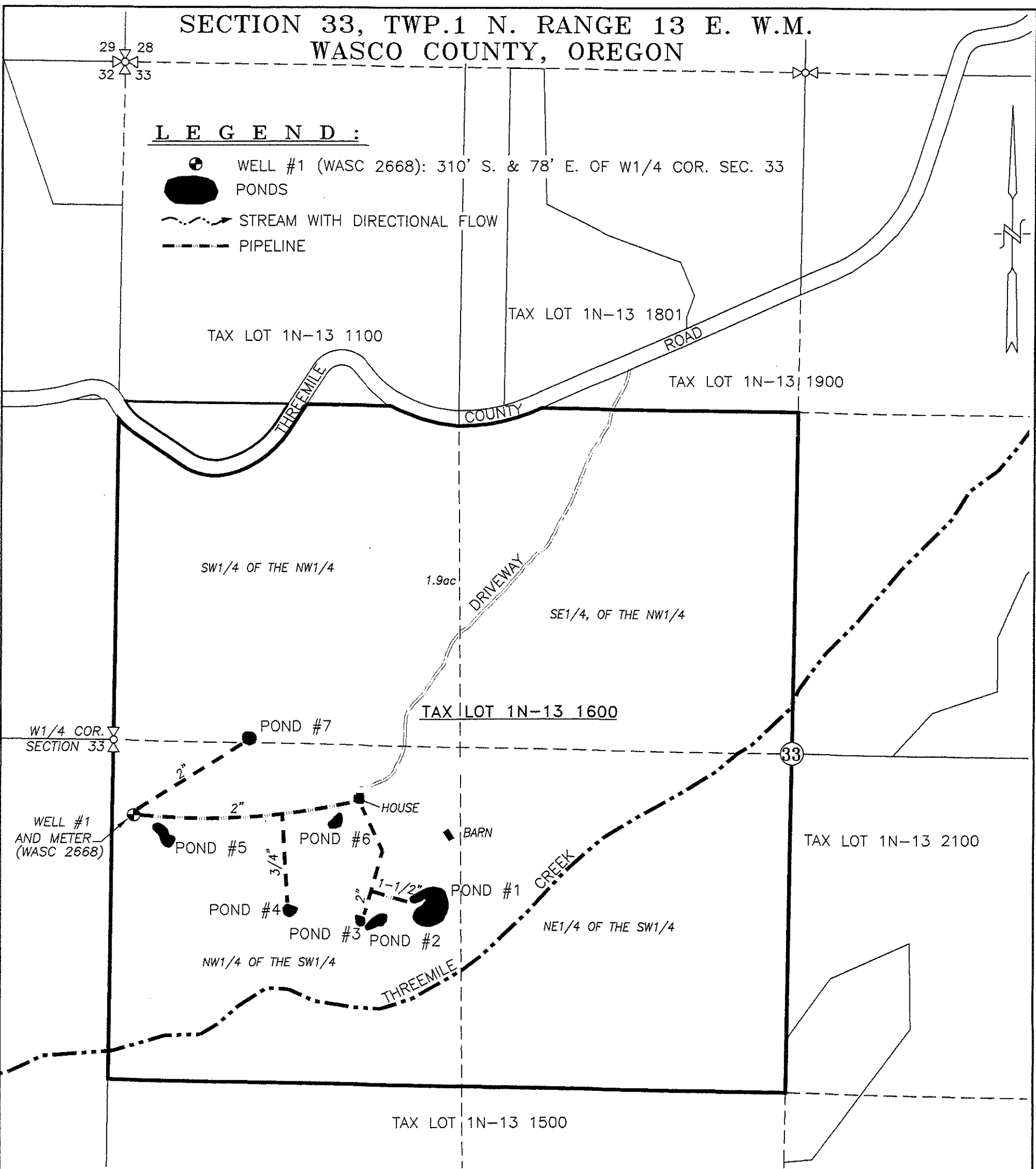


SECTION 33, TWP.1 N. RANGE 13 E. W.M.  
WASCO COUNTY, OREGON

29 28  
32 33

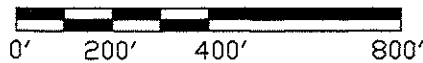
**LEGEND:**

-  WELL #1 (WASC 2668): 310' S. & 78' E. OF W1/4 COR. SEC. 33
-  PONDS
-  STREAM WITH DIRECTIONAL FLOW
-  PIPELINE



**CLAIM OF BENEFICIAL USE MAP**

SCALE: 1" = 400'



POND#	LOCATION	COORD. FROM W1/4 COR. SECTION 33
POND #1	NW1/4, SW1/4	640'S & 1250'E
POND #2	NW1/4, SW1/4	700'S & 1030'E
POND #3	NW1/4, SW1/4	700'S AND 960'E
POND #4	NW1/4, SW1/4	655'S AND 690'E
POND #5	NW1/4, SW1/4	370'S AND 200'E
POND #6	NW1/4, SW1/4	315'S AND 870'E
POND #7	SW1/4, NW1/4	10'N AND 870'E

TRANSFER No. 11470

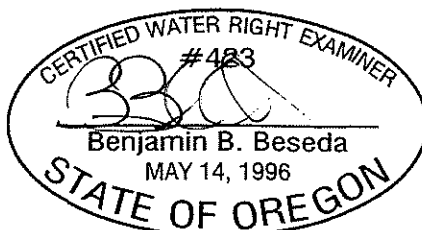
IN THE NAME OF:

C. BRUCE & SHERRIE ANNE SCHWARTZ

DATE: JUNE 12, 2023

BY: **TENNESON ENGINEERING CORP.**

3775 CRATES WAY  
THE DALLES, OREGON. 97058  
PH. 541-296-9177  
FAX 541-296-6657



EXPIRES: 12/31/2023

**NOTE:**

"THIS MAP IS NOT INTENDED TO PROVIDE DIMENSIONS OR LOCATIONS OF PROPERTY OWNERSHIP LINES."