

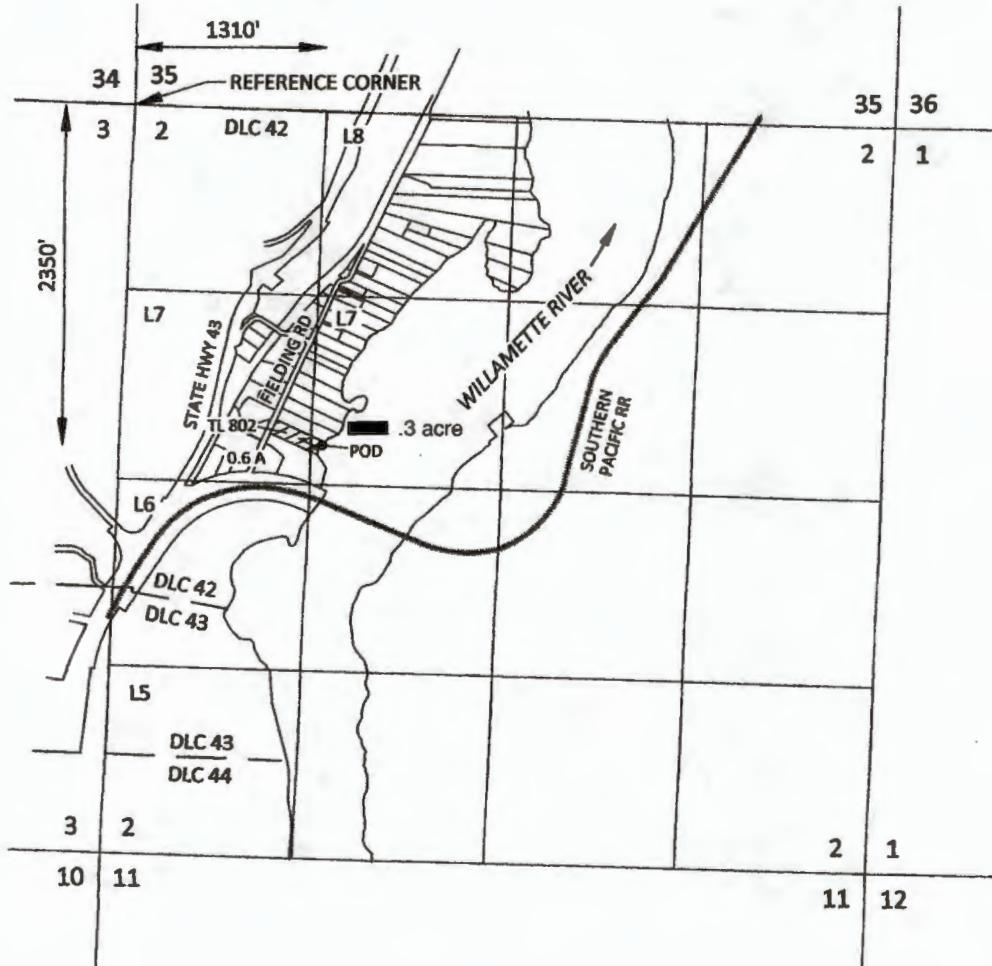
Section 2, T2S, R1E, W.M.,  
Clackamas County, Oregon

SURFACE WATER APPLICATION MAP  
John Ward

RECEIVED

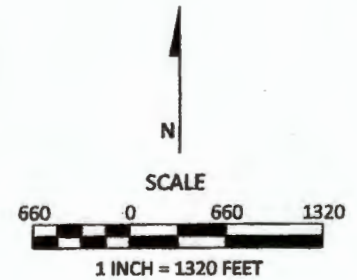
JUN 26 2023

OWRD



POD is located 2350 feet south & 1310 feet east of the NW corner of Section 2, T2S, R1E, W.M.\*

\* Distances based on cardinal directions from reference corner as required by the Certificate Section.






April 6, 2023

**kpff**

111 SW Fifth Ave., Suite 2400  
Portland, OR 97204  
O: 503.227.3251  
F: 503.274.4681  
[www.kpff.com](http://www.kpff.com)

**EXPLANATION**

-  PROPOSED PLACE OF USE IRRIGATION - ~~POD~~ .3 acres
-  POD
-  PIPE

This map is not intended to provide legal dimensions or locations of property ownership lines

**Figure 1**