

THIS MAP WAS PREPARED FOR ASSESSMENT PURPOSE ONLY.

SEC.17 T.26S. R.2W. W.M.
DOUGLAS COUNTY
1" = 400'

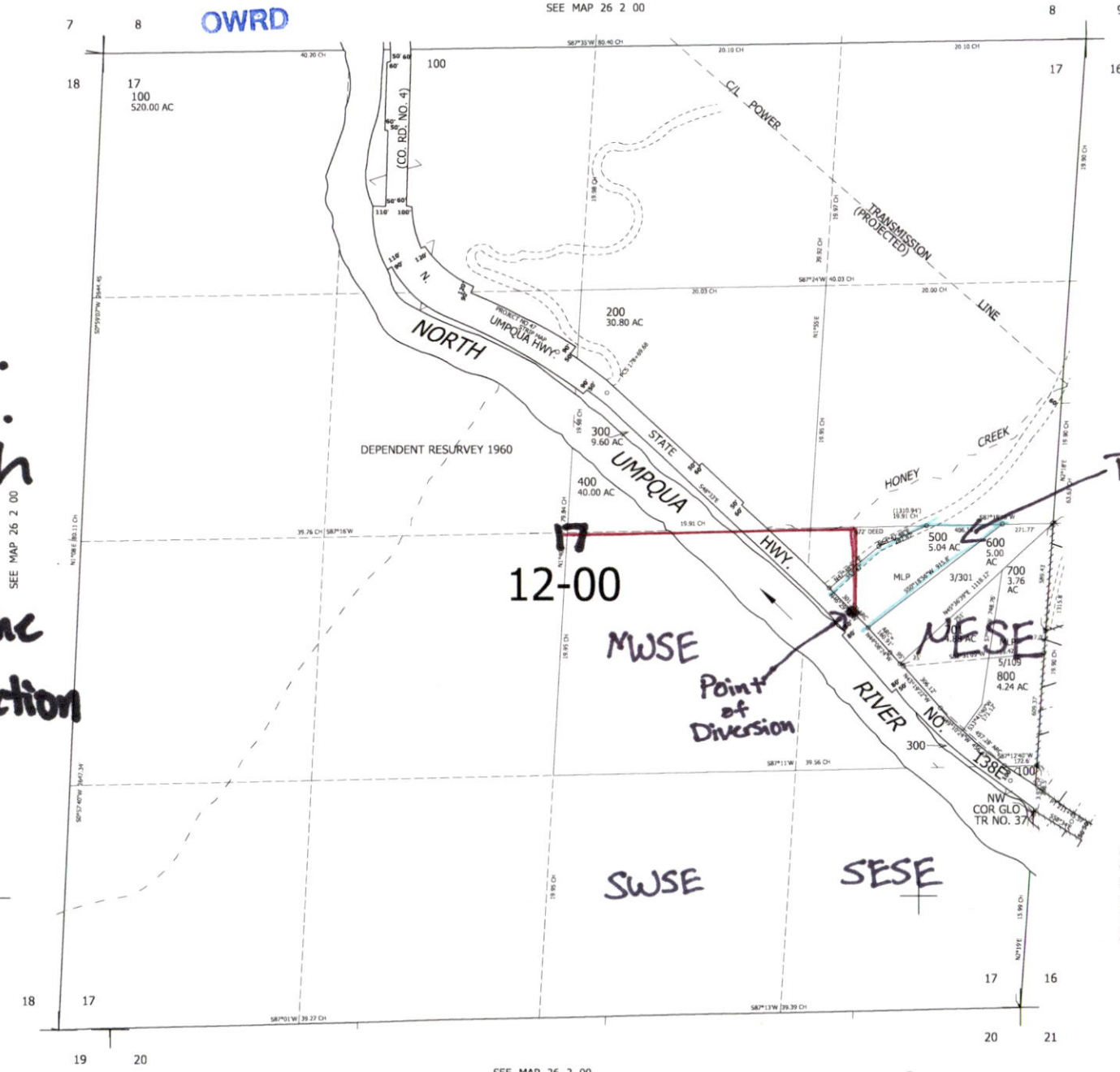
REVISED ON
5-11-21

26 2 17

RECEIVED
JUL 26 2023
OWRD



Point of
Diversion is:
475 ft South
E 1580 ft
East from the
Center of Section
17



CANCELLED NOS
801

SEE MAP 26 2 16

Tax Lot 500

SEE MAP 26 2 16C

SEE MAP 26 2 21

605,000

SEE MAP 26 2 00

1,266,000

26 2 17